



# T&B Rigid Fittings

CAT NO. CONFIGURATION

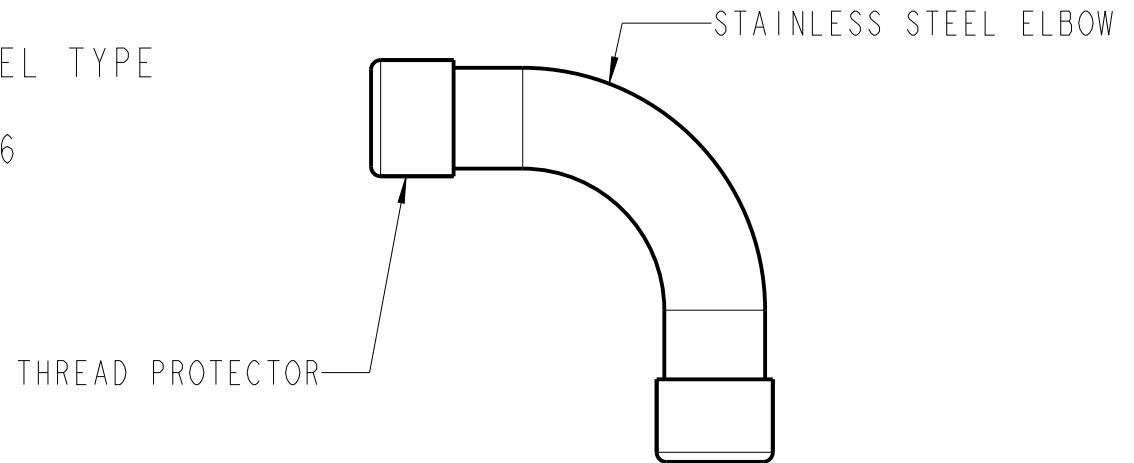
ELL 1/2 45 SS

STAINLESS STEEL TYPE  
 SS = TYPE 304  
 SST = TYPE 316


BEND DEGREE  
 45 = 45°  
 BLANK = 90°

NOMINAL SIZE  
 1/2 = 1/2  
 3/4 = 3/4  
 1 = 1  
 1 1/4 = 1-1/4  
 1 1/2 = 1-1/2  
 2 = 2

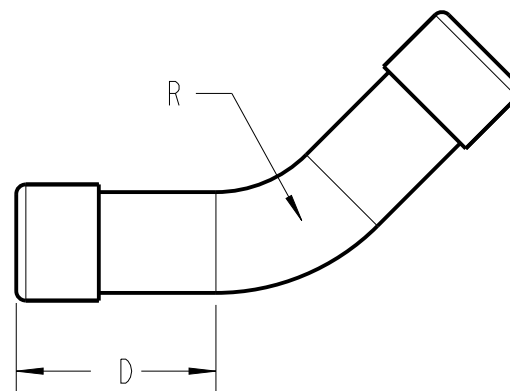
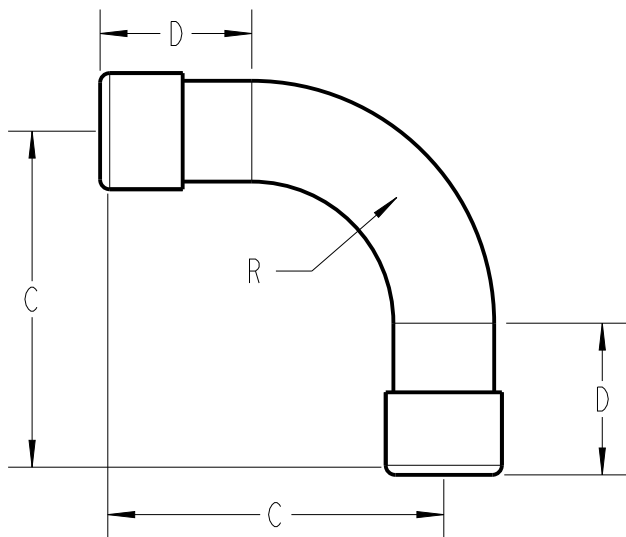
ELBOW



www.tnb.com

REVISIONS	GENERAL NOTES	DESCRIPTION: ELBOW STAINLESS STEEL			 A Member of the ABB Group
1 SEE ERN ( 2017303 ) FOR APPROVAL SIGNATURES & RELEASE DATE. PROJECT NO: RM401890	1. ALL DIMENSIONS ARE FOR REFERENCE ONLY. 2. DIMENSIONS IN BRACKETS [ ] ARE IN METRIC UNITS.	ORIGINAL PROJECT NO / ( ERN NO ) RM401890 / ( 2017022 )	SHEET NO: 1 OF 2	REV. NO: 1	

THIS DRAWING IS INTENDED FOR DESCRIPTIVE PURPOSES ONLY. AND THE RIGHT IS RESERVED TO DEVIATE FROM ANY OF THE DETAILS SHOWN HEREON.  
 COPYRIGHT ABB GROUP. ALL RIGHTS RESERVED. PROPRIETARY AND CONFIDENTIAL.



Trade Size	Metric Designator	R	C (mm)	D (mm)
1/2	16	4" (102)	5-1/2" (140)	1-1/2" (38)
3/4	21	4-1/2" (114)	6" (152)	1-1/2" (38)
1	27	5-3/4" (146)	7-5/8" (194)	1-7/8" (48)
1-1/4	35	7-1/4" (184)	9-1/4" (235)	2" (51)
1-1/2	41	8-1/4" (210)	10-1/4" (261)	2" (51)
2	53	9-1/2" (241)	11-1/2" (292)	2" (51)

**Thomas & Betts**  
A Member of the ABB Group

ELBOW  
STAINLESS STEEL

SIZE: A	SCALE: 0.500	SHEET: 2 OF 2
DRAWING NO:	<b>WSD-001606</b>	REV: <b>1</b>