

Issue Date: 11/09/2012

Page: 1 of 2

File: PSS-161GP

15kV	200A Grounding Plug	w/ Ground Lead	161GP
------	---------------------	----------------	-------



## Features:

- 15kV, 200 Amp Rated
- Contains a fully operational fault close mechanism in the grounding plug
- Stainless steel mounting bracket
- 5/16"-18 stainless steel eyebolt with brass cap nut allows hot stick installation and firmly secures the 161GP into the mating parking stand
- Equipped with a 6ft., 600 Volt, 1/0 Stranded tinned copper ground lead

## 161GP Grounding Plug (with Ground Lead)

### Applications:

The Elastimold® 161GP is equipped with a 15kV class, 200 Amp loadbreak interface, 6 feet (183cm) of 1/0 AWG grounding cable, stainless steel mounting bracket and hot stick operable mounting hardware. The 161GP Grounding Plug is inserted into a standard parking stand with an insulated hot stick and secures in place. Mating de-energized Elastimold® 15kV class loadbreak elbows can then be removed from the equipment and placed on the 161GP Grounding Plug to ground the circuit.

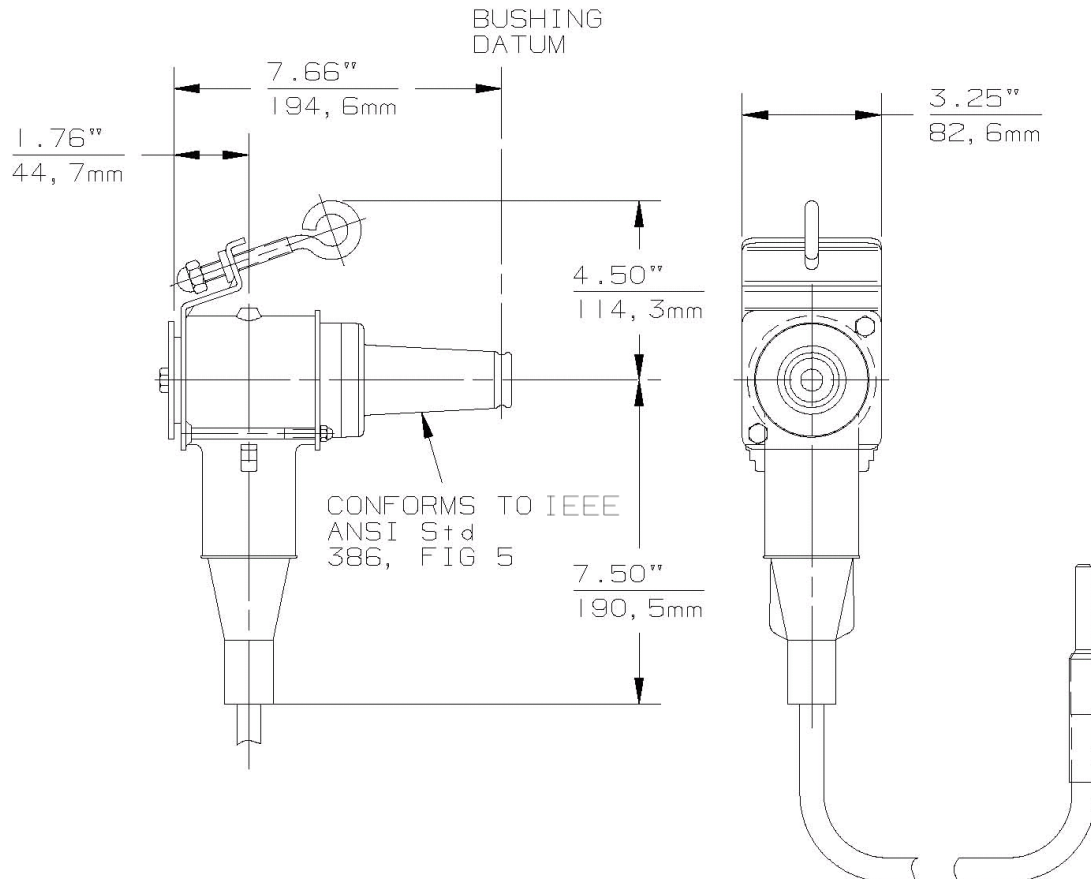
### Ratings:

Meets ANSI/IEEE Standard 386, Latest Revision

#### For 15kV Voltage Class:

200 Amp – Continuous  
10kA Sym – 10 Cycles Momentary & Fault Close

15kV	<b>200A Grounding Plug</b>	w/ Ground Lead	161GP
------	----------------------------	----------------	-------



### Ordering Instructions:

To order, specify number **161GP** grounding plug.

### Each kit contains the following:

- |   |                          |            |
|---|--------------------------|------------|
| 1 | Grounding Plug           | 161GP      |
| 1 | Lubricant                | 82-08      |
| 1 | Installation Instruction | IS-0369    |
| 1 | Grounding cable #14 AWG  | 160-185-2  |
| 1 | Protective Shipping Cap  | 1601-APC-1 |