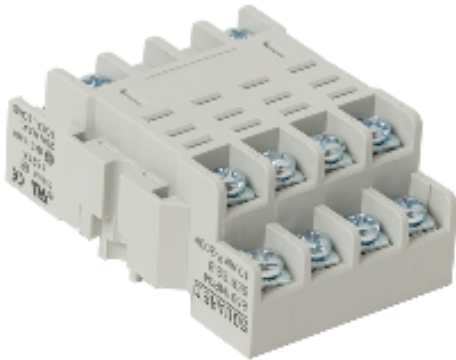


Product availability : Stock - Normally stocked in distribution facility



Price* : 26.70 USD



Main

Range of product	8501N
Product or component type	Relay Socket
Line Rated Current	10 A
Product certifications	CE CSA RoHS UL recognized
Shape of pin	Spade
Pin number	14
Mounting support	DIN rail Panel
Quantity per set	Set of 10
Electrical connection	Double tiered screw clamp terminals

Ordering and shipping details

Category	21142 - 8501 N
Discount Schedule	CP2
GTIN	00785901218401
Nbr. of units in pkg.	10
Package weight(Lbs)	0.17000000000000001
Returnability	N
Country of origin	CN

Offer Sustainability

Sustainable offer status	Not Green Premium product
RoHS (date code: YYWW)	Compliant - since 0639 - Schneider Electric declaration of conformity Schneider Electric declaration of conformity
REACH	Reference not containing SVHC above the threshold

Reference not containing SVHC above the threshold

Contractual warranty

Warranty period	18 months
-----------------	-----------
