



Southwire™

PDTP-K1

Professional Impact Punchdown Tool

THE PROFESSIONAL IMPACT PUNCHDOWN TOOL INCLUDES 110 & 66 TWIST-TO-LOCK BLADES AND FEATURES UNIQUE PULL OUT ACCESSORY TOOLS IN A COMFORTABLE, DURABLE TOOL BODY.

HI/LO IMPACT
Adjustable impact force

DOUBLE-MOLDED
Tool body fits comfortably in hand

COVERED STORAGE
Spare blade is securely stored on board

ACCESSORY TOOLS
Wire hook and spudger accessory tools pull out with easy-to-use thumbstuds



METAL INJECTION MOLDED
Blades are metal injection molded for precision and durability



Southwire™

TOOLS & EQUIPMENT

[BUILT FOR DURABILITY.
BUILT FOR RELIABILITY.
BUILT FOR WORK.]

1-855-SWT00LS
(855-798-6657)



Scan code to see more
Southwiretools.com



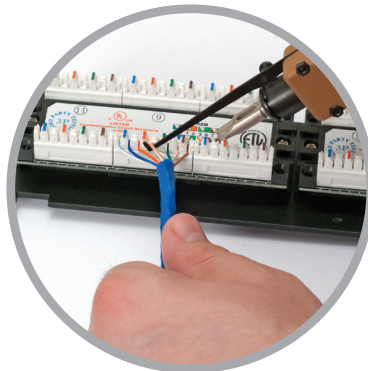
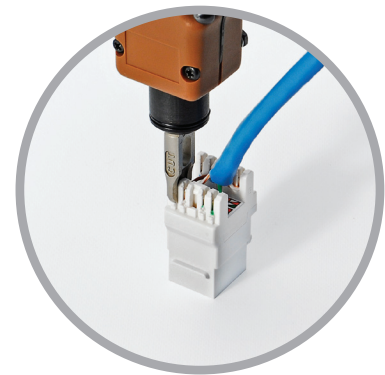
Southwire™

PDTP-K1

Professional Impact Punchdown Tool



- TERMINATES TWISTED PAIR "CATEGORY" CABLE INTO WALL JACKS AND PATCH PANELS FOR PHONE AND DATA COMMUNICATIONS
- COMPATIBLE WITH 66- AND 110-STYLE PATCH PANELS AND JACKS
- ATTACHES TO IMPACT TOOL WITH SIMPLE TWIST-TO-LOCK DESIGN
- INCLUDES: 110 PUNCH & CUT AND 66 PUNCH & CUT



BLADES AVAILABLE SEPARATELY

B1	Reversible 66/110 Cut-Only Punchdown Blade
B2	Reversible 110 Cut/Punch Punchdown Blade
B3	Reversible 66 Cut/Punch Punchdown Blade

⚠ CAUTION: Tool has moving parts that can pinch/cut. Keep hands and fingers clear.

⚠ WARNING: Always wear approved eye protection.



Southwire™

TOOLS & EQUIPMENT

[BUILT FOR DURABILITY.
BUILT FOR RELIABILITY.
BUILT FOR WORK.]

1-855-SWT00LS
(855-798-6657)



Scan code to see more
Southwiretools.com