

QF500T

Telescoping double reinforced tripod stand with a powerful 500 watt work light. High quality on/off switch, tempered glass, extra depth wire guard and 12' power cord with grounded plug. 500 watt lamp included (130 volt for extended life).

Finish: Stand: ● Safety Yellow
 Fixture: ● Black



QF2X500T

Telescoping double reinforced tripod stand with twin powerful 500 watt work lights. High quality on/off switch, tempered glass, extra depth wire guard and 12' power cord with grounded plug. Two 500 watt lamps included (130 volt for extended life).

Finish: Stand: ● Safety Yellow
 Fixture: ● Black

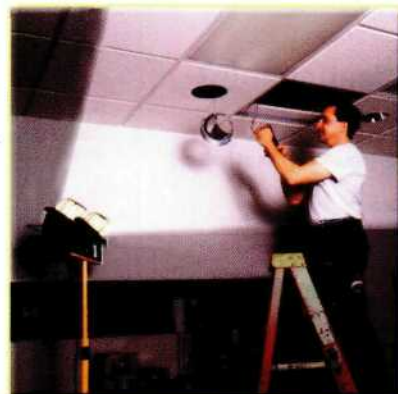
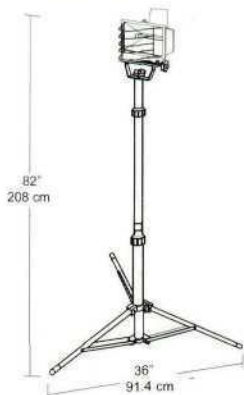


Catalog Numbers

Single Black fixture / yellow stand
 QF500T

Twin Black fixtures / yellow stand
 QF2X500T

Dimensions



Portable Quartz towers put light where you need it on residential, commercial and industrial jobs.

WORKLIGHT TOWERS

Quartz Tower Worklights for Electrical Pros with portable stand, deluxe features and 12' power cord.



Insulated tilt and carrying handles
Tempered glass lenses
Silicone gaskets for durable weatherproofing and easy relamping
Easy sideways and up/down tilt adjustment
High quality on/off switch



12' power cord with grounded plug
Oversize tube locks insure safe adjustment

6' telescoping tripod stand
Extra depth wire guard improves safety and prevents shadows



Stand has bright yellow finish for safety

Tower folds and collapses for easy carrying and compact storage
Double reinforced tripod legs for long reliable service

Highest quality 130 volt Quartz Halogen lamp packed with protective cushion for easy installation



Product Information

Double Ended Quartz Halogen
Lamp supplied with fixture

Lamp Watts	Lamp Type	Lamp Base	Initial Lumens	Lamp Hours
500	T3	Double Ended RSC	10,500	2,000

Specifications

- UL Listing:**
Suitable for wet locations.
- Housing:**
Precision die cast aluminum
- Lens Gasket:**
High temperature tubular silicone set in retaining groove to remain in place during relamping.
- Reflector:**
Pebbled anodized aluminum
- Socket:**
Porcelain with spring loaded contacts
- Lens:**
Tempered, shock resistant glass

- Power cord:**
Heavy duty rubber clad with grounded plug.
- Finish:**
Chip and fade resistant epoxy powder coating
- Replacement Parts:**
- | Fixture | Lamp Cat # | Lens Cat # |
|----------|------------|------------|
| QF500T | LQ500 | LQF500P |
| QF2X500T | LQ500 | LQF500P |

Product info by Fax 24 / 7
Call RAB Fax Back at 888 722-1236.
Enter document numbers shown below:

	Catalog Page	Installation Manual
QF500T	262	267
QF2X500T	262	266

For more info on RAB FaxBack see p.98.

Product Info on the Internet:
www.rabweb.com, click "support"