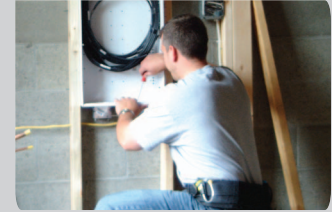


## On-Q/Legrand® Home Systems Concrete Enclosures

Our affordable Home Network Centers for concrete construction are made out of a rugged, more durable grade of steel to withstand concrete pour. Available in three sizes (20", 26" and 36"), these enclosures are designed to meet the home networking needs of all sizes of concrete homes, which are common to the Southern U.S. States, Puerto Rico and South America.

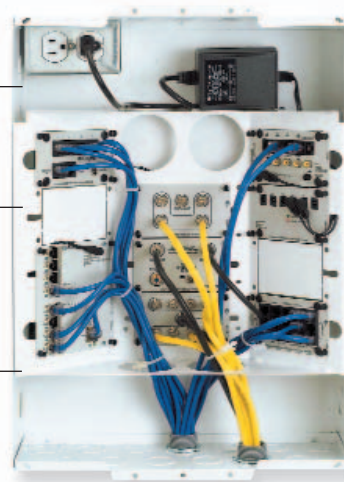


### 20" ROUGH-IN ENCLOSURE

Rugged, more durable grade of steel to withstand concrete pour.

Angled mounts for snap-in modules provide optimum work room, easy visibility and fast, simple connection points.

Multiple 3/4" and 1" concentric conduit knock outs for entry from the top, bottom and sides.



F7505

### FEATURES

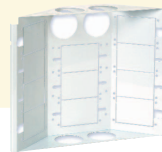
- Front mounting flange for better alignment and prevention of rotation during concrete pour.
- Slots for cover mounting ensure level installation after concrete pour.

### RELATED PRODUCTS



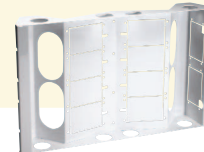
HINGED METAL COVER WITH LATCH

F8030



WING MOUNTING BRACKET

F7752



WING MOUNTING BRACKET

F7754

### ENCLOSURES FOR CONCRETE CONSTRUCTION

PART #	DESCRIPTION	DIMENSIONS (H x W x D)
F7505	20" Rough-in Enclosure (16-gauge steel)	19.5" x 14.2" x 4.6"
F7507	26" Rough-in Enclosure (16-gauge steel)	26" x 19.1" x 3.6"
F7506	36" Rough-in Enclosure (16-gauge steel)	36" x 19.1" x 3.6"

### ENCLOSURE ACCESSORIES FOR CONCRETE CONSTRUCTION

PART #	DESCRIPTION	DIMENSIONS (H x W x D)
F7752	Wing Mounting Bracket for F7505	11.4" x 14.2" x 3.3"
F8031	Flat Metal Cover for F7505	22" x 17"
F8030	Hinged Metal Cover with Latch for F7505	22" x 17" Mod
F7756	Half Wing Mounting Bracket for F7507	6.8" x 18.9" x 3.2"
F8033	Hinged Metal Cover with Latch for F7507	29" x 22"
F7754	Wing Mounting Bracket for F7506 and F7507	11.3" x 18.9" x 3.2"
F8032	Hinged Metal Cover with Latch for F7506	39" x 22"
F8010	Hinged Locking Kit	N/A
F2242	2.5" Grommet Ring	N/A