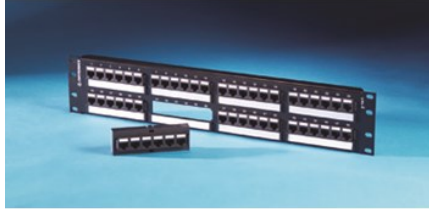

48 PORT TECHCHOICE PATCH PANEL, CAT6

OR-SP6U48 | [Ortronics](#)



FEATURES & BENEFITS

24- and 48-port TechChoice® patch panels are available in the traditional multi-port panel format with 6-port modules for Cat6 and Cat5e. Patch panel kits are also available to support individual keystone jacks. This panel is a Category 6 patch panel, 48-port, universal T568A/B wiring, six-port modular, 2 rack units.



PRODUCT
ENVIRONMENTAL PROFILE

SPECIFICATIONS

GENERAL INFO

Footprint: Keystone
Performance Category: Cat 6 component compliant
Product Series: TechChoice
Type: Patch Panels

LISTING AGENCIES/THIRD PARTY CERTIFICATIONS

RoHS: Yes

TECHNICAL INFORMATION

Category Rating: Cat 6 component compliant
Performance Rating: Cat6

BUY AMERICAN ACT COMPLIANCE

Country Of Origin: MEXICO
Buy American Act Status: Trade Agreement Act Compliant

