



Table of Contents

HID AND OUTDOOR LIGHTING PAGE

Wallpacks	
Full Cutoff	1
Semi Cutoff	1
Mini & Compact - Die Cast	2
Compact	3
Medium & Large	4
Large Deep	5
Large with Battery Backup	5
Adjustable Compact	6
"THE ROCKY" Compact & Medium	8
"THE ROCKY" Large	9
Floodlights	
Fluorescent & Compact	10
Low Profile	11
Medium	11
Large & 1000 Watt	12
Incandescent	13
Quartz Bullet (Single and Dual)	13
Quartz	14

BALLAST KITS

Ballast Kits Only (Metal Halide & Sodium)	15
Ballast Kits w/Lamp (Metal Halide & Sodium)	16

SECURITY LIGHTING

Dusk-to-Dawn	17
Motion Lights	20

EMERGENCY AND EXIT LIGHTING

LED Exit Light	21
Combination LED/Incandescent	21
Twin Head Emergency Light	22
Fixed Optics Emergency Light	22
Edge Lit LED Exit Light	23
Wet Location Emergency Light	23
Wet Location LED Exit/Two Head Emergency Unit.	24
Heavy Duty Emergency Light	24
Emergency Fluorescent Ballast	25
Remote Heads & Accessories	26

INDUCTION LIGHTING

Introduction to Induction Lighting	28
Large Architectural Wallpack	29

INDUCTION LIGHTING (CONT'D) PAGE

Medium & Large Architectural Wallpack	29
Large Deep Wallpack	30
Vandal Resistant Garage Lighter	30
Induction Garage/Canopy Lighter	32
Large Vandal Resistant Canopy	32
High Bay	33
Deluxe Cobrahead	33
16", 23" Area Floodlight	34
Medium & Large Low Profile Shoebox Type 2	35
Medium Shoebox Type 3	36
Large Shoebox Type 3	37
Medium Shoebox Type 5	38
Large Shoebox Type 5	39

VANDAL RESISTANT AND GARAGE

Entry Cylinders	40
Vandal Resistant 5x8 Entry	40
Small and Large Vandal Resistant	41

WORKLIGHTS

Super Duty	42
Heavy Duty Fluorescent & 2-in-1 Portable	42
Incandescent Loading Dock Lights	43
Short-term Lighting Systems & Accessories	44

VAPORTITE

Box Lights	45
Pendant Lights	45
Wall Lights	46
Vaportite Accessories	46

UNDERCABINET LIGHTING

3" & 5" Fluorescent	47
-------------------------------	----

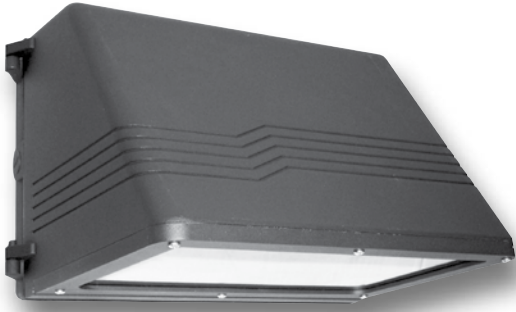
ACCESSORIES

Wire Guards	48
Glare Shields	48
Heavy Duty Ground Stake	48

LIGHTING PRODUCTS

HID AND OUTDOOR LIGHTING

WALLPACKS - FULL CUTOFF



APPLICATIONS:

Warehouses, parking lots, multi-family, general area lighting where light control is critical

SPECIFICATIONS:

NSi Full Cutoff Wallpacks have a tempered flat glass lens with die cast hinged front and rear housings, silicone gasketing and stainless steel hardware. Porcelain socket and bracket. Full cutoff wallpacks meet "dark sky" compliance.

LAMP INCLUDED

DIMENSIONS:

	H	W	D
MFC (Medium)	7.2"	14.25"	11.4"

DARK SKY
compliant!

CATALOG NO.	UPC CODE	DESCRIPTION	VOLTS	BALLAST	LAMP	BASE	SHIPPING WEIGHT (LBS)
WPMFC175MHQ [»]	05817	Full Cutoff Med Wallpack 175 Watt Metal Halide	120/208/240/277	QUAD CWA	ED17	medium	17
WPMFC150SQ [»]	05818	Full Cutoff Med Wallpack 150 Watt Sodium	120/208/240/277	QUAD HX-HPF	ED17	medium	18

WALLPACKS - SEMI CUTOFF

APPLICATIONS:

Warehouses, parking lots, multi-family, general area lighting where light control is critical

SPECIFICATIONS:

NSi Semi Cutoff Wallpacks have a tempered frosted anti-glare glass lens with die cast hinged front cover for easy relamping and servicing. Stainless steel hardware and silicone gasketing. Semi cutoff wallpacks are "dark sky" friendly.

LAMP INCLUDED

DIMENSIONS:

	H	W	D
MSC (Medium)	7.2"	14.2"	8.5"
LSC (Large)	9.8"	17.8"	14.4"



DARK SKY
friendly! **Anti-Glare LENS TECHNOLOGY!**

CATALOG NO.	UPC CODE	FIG. NO.	DESCRIPTION	VOLTS	BALLAST	LAMP	BASE	SHIPPING WEIGHT (LBS)
WPMSC175MHQ [»]	05823	1	Semi Cutoff Medium Wallpack 175 Watt Metal Halide	120/208/240/277	QUAD CWA	ED28	mogul	19
WPMSC150SQ [»]	05824	1	Semi Cutoff Medium Wallpack 150 Watt Sodium	120/208/240/277	QUAD HX-HPF	ED17	mogul	19
WPLSC400MHQ [»]	05825	2	Semi Cutoff Large Deep Wallpack 400 Watt Metal Halide	120/208/240/277	QUAD CWA	BT37	mogul	26
WPLSC400SQ [»]	05826	2	Semi Cutoff Large Deep Wallpack 400 Watt Sodium	120/208/240/277	QUAD CWA	ED28	mogul	26

[»] Subject to prior sale

MINI WALLPACK



APPLICATIONS:

Small area fixtures for doorways, loading docks, commercial, institutional, industrial areas

SPECIFICATIONS:

Mini wallpacks are available with a one-piece polycarbonate housing and lens (1) or with a die-cast housing and borosilicate glass lens (2). UL Listed for wet location use. Excellent for security and perimeter lighting and commercial and industrial applications. Polycarbonate version available with built-in photocontrol. Die cast version can be field installed with photocontrol.

LAMP INCLUDED

DIMENSIONS:

	H	W	D
WP	11"	6.9"	5.2"
WPGC	12"	7.3"	5.3"

CATALOG NO.	UPC CODE	FIG. NO.	DESCRIPTION	VOLTS	BALLAST	LAMP	BASE	SHIPPING WEIGHT (LBS)
WP42FL*	05834	1	Mini Wallpack 42 Watt Fluorescent	120/277V	ELECTRONIC	PLC		8
WP26FLPC*	05839	1	Mini Wallpack 26 Watt Fluorescent With Photocontrol	120/277V	ELECTRONIC	PLC		5
WP70S	05841	1	Mini Wallpack 70 Watt Sodium	120V	R-NPF	ED17	medium	5
WP35SPC	06471	1	Mini Wallpack 35 Watt Sodium with Photocontrol	120V	R-NPF	ED17	medium	5
WP50SPC	06472	1	Mini Wallpack 50 Watt Sodium with Photocontrol	120V	R-NPF	ED17	medium	5
WP70SPC	05842	1	Mini Wallpack 70 Watt Sodium With Photocontrol	120V	R-NPF	ED17	medium	5
WPGC100MHQ	05843	2	Mini Wallpack Die Cast 100 Watt Metal Halide	120/208/240/277V	QUAD HX-NPF	ED17	medium	12
WPGC42FL*	05844	2	Mini Wallpack Die Cast 42 Watt Fluorescent	120/277V	ELECTRONIC	PLC		8

COMPACT WALLPACK - DIE CAST

APPLICATIONS:

Small area fixtures for doorways, loading docks, commercial, institutional, industrial areas

SPECIFICATIONS:

Compact wallpacks have a die cast housing with powder-coat finish and prismatic borosilicate glass lens with gasket. Porcelain medium base socket assembly. One piece semi-specular asymmetric anodized aluminum reflector. UL Listed for wet location use. Excellent for security and perimeter lighting and commercial and industrial applications.

LAMP INCLUDED

DIMENSIONS:

	H	W	D
WPC100MHQ	9.5"	8.5"	7.5"



for Wire Guard see page 48

CATALOG NO.	UPC CODE	DESCRIPTION	VOLTS	BALLAST	LAMP	BASE	SHIPPING WEIGHT (LBS)
WPC100MHQ	05846	Compact Wallpack 100 Watt Metal Halide Glass Lens	120/208/240/277	QUAD HX-HPF	ED17	medium	11

**energy saving*
FLUORESCENT!

COMPACT WALLPACK



APPLICATIONS:

Small area fixtures for doorways, loading docks, commercial, institutional, industrial areas

SPECIFICATIONS:

Compact wallpacks have a die cast housing with powdercoat finish and prismatic polycarbonate lens with gasket. Porcelain medium base socket assembly. One piece semi-specular asymmetric anodized aluminum reflector. UL Listed for wet location use.

LAMP INCLUDED

DIMENSIONS:

	H	W	D
WPC	9.5"	8.5"	7"

CATALOG NO.	UPC CODE	DESCRIPTION	VOLTS	BALLAST	LAMP	BASE	SHIPPING WEIGHT (LBS)
WPC70MHQ	05845	Compact Wallpack 70 Watt Metal Halide Polycarbonate Lens	120/208/240/277	QUAD HX-NPF	ED17	medium	9
WPC70S	05847	Compact Wallpack 70 Watt Sodium Polycarbonate Lens	120V	R-NPF	ED17	medium	7
WPC100S	05848	Compact Wallpack 100 Watt Sodium Polycarbonate Lens	120V	R-NPF	ED17	medium	7

APPLICATIONS:

Small area fixtures for doorways, loading docks, commercial, institutional, industrial areas

SPECIFICATIONS:

Semi cutoff compact wallpacks have a die cast housing with powdercoat finish and a porcelain medium base socket assembly. Tempered flat glass frosted lens. UL Listed for wet location use.

LAMP INCLUDED

DIMENSIONS:

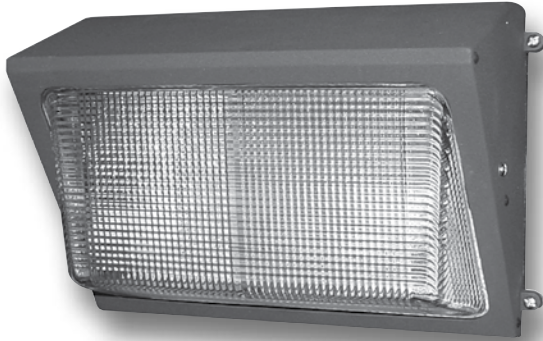
	H	W	D
WPCSC	7.5"	8.7"	8.9"



Anti-Glare
LENS TECHNOLOGY!

CATALOG NO.	UPC CODE	DESCRIPTION	VOLTS	BALLAST	LAMP	BASE	SHIPPING WEIGHT (LBS)
WPCSC100MHQ	05851	Semi-cut Compact Wallpack 100 Watt Metal Halide	120/208/240/277	QUAD HX-HPF	ED17	medium	13

WALLPACK - MEDIUM



APPLICATIONS:

Warehouse, perimeter lighting, security, and retail

SPECIFICATIONS:

NSI's Medium wallpacks have a die cast housing and lens frame with powdercoat finish and a porcelain medium base socket assembly. Front frame is hinged with one piece stippled aluminum reflector. Heat and shock resistant borosilicate glass lens, silicone gasketing. Listed for wet location use. Excellent for security and perimeter lighting and commercial and industrial applications.

LAMP INCLUDED

DIMENSIONS:

	H	W	D
WPM	9"	14.25"	7.1"

For Wire Guard see page 48

CATALOG NO.	UPC CODE	DESCRIPTION	VOLTS	BALLAST	LAMP	BASE	SHIPPING WEIGHT (LBS)
WPM84FL*	05838	Medium Wallpack 84 Watt Fluorescent	120/277V	ELECTRONIC	2x42 6500K		8
WPM100MHQ	05852	Medium Wallpack 100 Watt Metal Halide	120/208/240/277	QUAD HX-HPF	ED17	medium	14
WPM150SQ	05854	Medium Wallpack 150 Watt Sodium	120/208/240/277	QUAD HX-HPF	ED17	medium	15
WPM150S	05855	Medium Wallpack 150 Watt Sodium	120V	R-NPF	ED17	medium	12
WPM150MHQP**	06400	Medium Wallpack 150 Watt Metal Halide Pulse Start	120/208/240/277	QUAD PULSE	ED17	medium	16

WALLPACK - LARGE



APPLICATIONS:

Warehouse, perimeter lighting, security, retail

SPECIFICATIONS:

Large wallpacks have a die cast housing with powdercoat finish and a porcelain mogul base socket assembly. One piece stippled aluminum reflector. Heat and shock resistant borosilicate glass lens, silicone gasketing. Listed for wet location use. Excellent for security and perimeter lighting, tunnels and commercial and industrial applications.

LAMP INCLUDED

DIMENSIONS:

	H	W	D
WPL	9"	18.2"	9.4"

CATALOG NO.	UPC CODE	DESCRIPTION	VOLTS	BALLAST	LAMP	BASE	SHIPPING WEIGHT (LBS)
WPL250SQ	05857	Large Wallpack 250 Watt Sodium	120/208/240/277	QUAD CWA	ED18	mogul	24
WPL250MHQP**	06402	Large Wallpack 250 Watt Metal Halide Pulse Start	120/208/240/277	QUAD PULSE	ED28	mogul	25

WALLPACK - LARGE DEEP

APPLICATIONS:

Warehouse, perimeter lighting, security, retail

SPECIFICATIONS:

Large Deep wallpacks have a die cast housing with powdercoat finish and a porcelain 4KV mogul socket assembly. Specular aluminum reflector. Heat and shock resistant borosilicate glass lens, silicone gasketing. Listed for wet location use. Excellent for security and perimeter lighting, tunnels and commercial and industrial applications. Large Deep wallpacks have an extra deep housing for better cooling and longer lasting components.

LAMP INCLUDED

DIMENSIONS:

	H	W	D
WPLD	9"	18.2"	12.8"



CATALOG NO.	UPC CODE	DESCRIPTION	VOLTS	BALLAST	LAMP	BASE	SHIPPING WEIGHT (LBS)
WPLD400SQ	05862	Large Deep Wallpack 400 Watt Sodium	120/208/240/277	QUAD CWA	ED18	mogul	28
WPLD250SQ	05863	Large Deep Wallpack 250 Watt Sodium	120/208/240/277	QUAD CWA	ED18	mogul	25
WPLD320MHQP*	06401	Large Deep Wallpack 320 Watt Metal Halide Pulse Start	120/208/240/277	QUAD PULSE	ED37	mogul	27
WPLD250MHQP*	07179	Large Deep Wallpack 250 Watt Metal Halide Pulse Start	120/208/240/277	QUAD PULSE	ED28	mogul	26

LARGE WALLPACKS (WITH BATTERY BACKUP)



90 MIN BATTERY BACKUP

1

APPLICATIONS:

Security and perimeter lighting - egress applications

SPECIFICATIONS:

Large battery backup wallpacks have die cast housings with powdercoat finish and tempered glass lens. Two 42 Watt compact fluorescent lamps with battery backup to run one lamp for 90 minutes in the event of power failure.

LAMP INCLUDED

DIMENSIONS:

	H	W	D
WPLFC	9.125"	18.25"	13.75"
WPL	9"	18.2"	9.4"

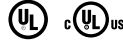


2



CATALOG NO.	UPC CODE	FIG. NO.	DESCRIPTION	VOLTS	BALLAST	LAMP	SHIPPING WEIGHT (LBS)
WPLFC84FL-BBU	05191	1	84 Watt Large Full Cut-off Wallpack with Battery Backup	120/277	ELECTRONIC	2x42 CFL	25
WPL84FL-BBU	05193	2	84 Watt Large Wallpack with Battery Backup	120/277	ELECTRONIC	2x42 CFL	23

BRONZE ADJUSTABLE COMPACT WALLPACK



fully open



half open



fully extended

APPLICATIONS:

Loading docks, entrance ways, commercial, institutional, industrial

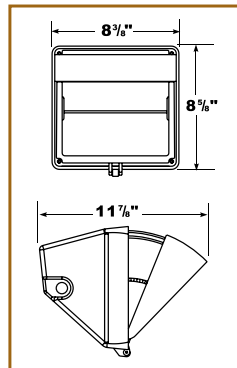
SPECIFICATIONS:

Adjustable wallpacks Tool-less ratcheting shield for multiple hood positions and adjusts to full cutoff positions. Heavy duty die cast aluminum housing with bronze powder coat finish. Anodized aluminum reflector. 1/2" tapped holes and flat glass lens. UL/CUL listed for wet location use.

LAMP INCLUDED

DIMENSIONS:

	H	W	D
WPCA	8.63"	8.38"	11.88"
	<i>(hood fully extended)</i>		



CATALOG NO.	UPC CODE	DESCRIPTION	VOLTS	BALLAST	LAMP	BASE	SHIPPING WEIGHT (LBS)
WPCA100MH	05951	Adjustable Wallpack 100 Watt Metal Halide	120	HX-NPF	ED17	MED	8.5
WPCA100S	05950	Adjustable Wallpack 100 Watt Sodium	120	R-NPF	ED17	MED	7
WPCA70MH	05965	Adjustable Wallpack 70 Watt Metal Halide	120	HX-NPF	ED17	MED	8.2
WPCA42FL*	05953	Adjustable Wallpack 6500K 42 Watt CFL	120	ELECTRONIC	CFL		4.5



HBAC2280IND
80 Watt High Bay

HBAC22200IND
200 Watt High Bay

Fixtures
are dedicated
voltage
120 or 277



GLD80IND
80 Watt Deluxe Garage Lighter



WPMX40IND
40 Watt Medium Wallpack

VRS40IND
40 Watt Vandal Resistant Canopy



WPLX80IND
80 Watt Large Wallpack

INDUCTION LIGHTING

Introducing **INDUCTION LIGHTING TECHNOLOGY**.
NO FILAMENTS & ELECTRODES to burn out,
these unique fixtures
LAST UP TO 100,000 HOURS,
making them virtually
maintenance free.

INNOVATIVE & COMPETITIVE
WE MAKE A GOOD TEAM

NSi Industries, LLC • USA • 800.321.5847 • www.nsiindustries.com

"THE ROCKY" COMPACT WALLPACK



APPLICATIONS:

Warehouse, parking lots, schools, correctional facilities, and high abuse areas

SPECIFICATIONS:

"The Rocky" Compact Wallpack includes wire guard and polycarbonate shield for total protection. Aluminum die cast housing, tempered glass lens, corrosion resistant hardware and silicone gasketing. Listed for wet location use.

LAMP INCLUDED

DIMENSIONS:

	H	W	E
WPCRKY	8.86"	8.74"	7.48"

CATALOG NO.	UPC CODE	DESCRIPTION	VOLTS	BALLAST	LAMP	BASE	SHIPPING WEIGHT (LBS)
WPCRKY100MHQ	07163	Compact Vandal Resistant Wallpack 100 Watt Metal Halide	Quad	HX-HPF	ED17	Medium	14.6
WPCRKY70S	07164	Compact Vandal Resistant Wallpack 70 Watt Sodium	120V	R-NPF	ED17	Medium	12.13
WPCRKY42FL*	07165	Compact Vandal Resistant Wallpack 42 Watt Fluorescent	120/277V	Electronic	CFL42W 3U	GX24q	10.56

"THE ROCKY" MEDIUM WALLPACK



APPLICATIONS:

Warehouse, parking lots, schools, correctional facilities, and high abuse areas

SPECIFICATIONS:

"The Rocky" Medium Wallpack includes wire guard and polycarbonate shield for total protection. Aluminum die cast housing, tempered glass lens, corrosion resistant hardware and silicone gasketing. Listed for wet location use.

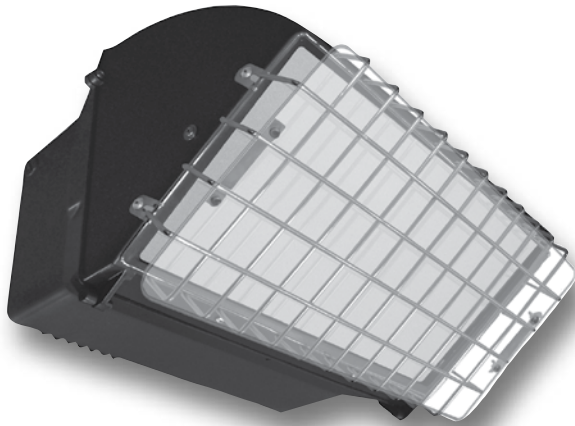
LAMP INCLUDED

DIMENSIONS:

	H	W	E
WPMRKY	9.06"	14.17"	8.46"

CATALOG NO.	UPC CODE	DESCRIPTION	VOLTS	BALLAST	LAMP	BASE	SHIPPING WEIGHT (LBS)
WPMRKY84FL*	07168	Medium Vandal Resistant Wallpack 84 Watt Fluorescent	120/277V	Electronic	2 x CFL42W 3U	GX24q	18
WPMRKY84FL-BBU*	07169	Medium Vandal Resistant Wallpack 84 Watt Fluorescent with 90 min. Battery Backup	120/277V	Electronic	2 x CFL42W 3U	GX24q	20
WPMRKY150SQ	07167	Medium Vandal Resistant Wallpack 150 Watt High Pressure Sodium	Quad	HX-HPF	ED23.5	MOG	20.5
WPMRKY150MHQP**	07166	Medium Vandal Resistant Wallpack 150 Watt Metal Halide w/ Pulse Start	Quad	CWA	ED28	MOG	21.38

"THE ROCKY" LARGE WALLPACK



APPLICATIONS:

Warehouse, parking lots, schools, correctional facilities, and high abuse areas

SPECIFICATIONS:

"The Rocky" Large Wallpack includes wire guard and polycarbonate shield for total protection. Aluminum die cast housing, tempered glass lens, corrosion resistant hardware and silicone gasketing. Listed for wet location use.

LAMP INCLUDED

DIMENSIONS:

	<i>H</i>	<i>W</i>	<i>E</i>
WPLRKY	9.84"	17"	14.4"



CATALOG NO.	UPC CODE	DESCRIPTION	VOLTS	BALLAST	LAMP	BASE	SHIPPING WEIGHT (LBS)
WPLRKY320MHQP	07171	Large Vandal Resistant Wallpack 320 Watt Metal Halide with Pulse Start	Quad	CWA	ED28	MOG	33

EXCLUSIVE FEATURES OF "THE ROCKY"

- 1
 - **First truly VANDAL RESISTANT wallpack**
 - Excellent for schools, correctional facilities, any high-abuse applications
 - Wire guard **AND** polycarbonate shield combined into **ONE ASSEMBLY**
 - 2
 - **Completely assembled (ready to go) NO ACCESSORIES to buy**
- Models available in:
 - HPS
 - MH
 - Fluorescent
 - Fluorescent Battery Back-up
 - Light Control - Semi Cutoff design
 - Glare control frosted tempered glass lens
 - Wet location listed

FLUORESCENT FLOODLIGHT



APPLICATIONS:

Landscape, facade, security, pathway, sign lighting

SPECIFICATIONS:

NSi's non-metallic Fluorescent Floodlight features twin 13 Watt fluorescent lamps, fully silicone gasketed lens and frame. Mounts with fully adjustable 1/2" NPT threaded knuckle. Listed for wet locations.

LAMP INCLUDED

DIMENSIONS:

	H	W	D
FLF	4.75"	9.25"	4.6"

energy saving
FLUORESCENT!

CATALOG NO.	UPC CODE	DESCRIPTION	VOLTS	BALLAST	LAMP	SHIPPING WEIGHT (LBS)
FLF26NM	05890	Fluorescent Flood 26 Watt Non-metallic	120V	ELECTRONIC	PLC	3

COMPACT FLOODLIGHT



APPLICATIONS:

Compact designs are ideal for security, accent and perimeter lighting; ideal for landscape, sign lighter, facades, general floodlighting

SPECIFICATIONS:

Our Compact Floodlight has a die cast housing and lens frame with powdercoat finish and a one piece high impact tempered lens, 1/2" NPT knuckle assembly. The reflector is stippled for glare reduction and controlled beam distribution. Hinged lens assembly has silicone gasket to seal out dust and moisture. Listed for wet location use.

LAMP INCLUDED

DIMENSIONS:

	H	W	D
FLC	7.5"	9"	7"



CATALOG NO.	UPC CODE	DESCRIPTION	VOLTS	BALLAST	LAMP	BASE	SHIPPING WEIGHT (LBS)
FLC70MHQ	05879	Compact Flood 70 Watt Metal Halide	120/208/240/277	QUAD HX-HPF	ED17	medium	9
FLC100MHQ	05880	Compact Flood 100 Watt Metal Halide	120/208/240/277	QUAD HX-HPF	ED17	medium	9
FLC70SQ	05882	Compact Flood 70 Watt Sodium	120/208/240/277	QUAD HX-HPF	ED17	medium	10
FLC150SQ	05883	Compact Flood 150 Watt Sodium	120/208/240/277	QUAD HX-HPF	ED17	medium	12
FLC42FL*	05884	Compact Flood 42 Watt Fluorescent	120V	ELECTRONIC	PLC	medium	8

**energy saving*
FLUORESCENT!

LOW PROFILE FLOODLIGHT



Shown mounted on FLPTM

APPLICATIONS:

Large area perimeter and security lighting: Industrial, storage yards, parking areas, auto dealerships, landscape and recreational areas.

SPECIFICATIONS:

Our Low-Profile floodlight has a die cast housing with powdercoat finish and comes with three piece anodized aluminum reflector, supplying wide beam distribution. High impact tempered lens. Listed for wet location use. Can be mounted for landscape/facade lighting; Pole tenon mount available.

LAMP INCLUDED

DIMENSIONS:

	H	W	D
FLLP	10.25"	16.25"	10.75"

for Wire Guard and Glare Shield see page 48

CATALOG NO.	UPC CODE	DESCRIPTION	VOLTS	BALLAST	LAMP	BASE	SHIPPING WEIGHT (LBS)
FLLP400SQ »	05873	Low Profile Flood 400 Watt Sodium	120/208/240/277	QUAD CWA	ED18	mogul	27
FLLP250SQ	05874	Low Profile Flood 250 Watt Sodium	120/208/240/277	QUAD CWA	ED18	mogul	25
FLLP150MHQP*	06417	Low Profile Flood 150 Watt Metal Halide Pulse Start	120/208/240/277	QUAD PULSE	ED28	mogul	21
FLLP250MHQP*	06418	Low Profile Flood 250 Watt Metal Halide Pulse Start	120/208/240/277	QUAD PULSE	ED28	mogul	25
FLLP320MHQP*	06397	Low Profile Flood 320 Watt Metal Halide Pulse Start	120/208/240/277	QUAD PULSE	ED37	mogul	26
FLPTM	06416	Pole Tenon Mount for FLLP Series					

MEDIUM FLOODLIGHT



APPLICATIONS:

Compact designs are ideal for security, accent and perimeter lighting; ideal for landscape, sign lighter, facades, general floodlighting

SPECIFICATIONS:

Our Medium Floodlight has a die cast housing and hinged top frame with textured bronze finish. The aluminum hydroformed reflector is rotatable and is adjustable for horizontal or vertical lamp positions. Fixture has adjustable 1/2" NPT threaded knuckle with angle indicators to assist in correct aiming.

LAMP INCLUDED

DIMENSIONS:

	H	W	D
FLM	10.25"	9"	7.25"

for Wire Guard and Glare Shield see page 48

CATALOG NO.	UPC CODE	DESCRIPTION	VOLTS	BALLAST	LAMP	BASE	SHIPPING WEIGHT (LBS)
FLM70MHQ	05885	Medium Flood 70 Watt Metal Halide	120/208/240/277	QUAD CWA	ED17	medium	10
FLM100MHQ	05886	Medium Flood 100 Watt Metal Halide	120/208/240/277	QUAD CWA	ED17	medium	11
FLM150MHQP*	06399	Medium Flood 150 Watt Metal Halide Pulse Start	120/208/240/277	QUAD PULSE	ED17	medium	13

LARGE FLOODLIGHT

APPLICATIONS:

Large area perimeter and security lighting: Industrial, storage yards, parking areas, auto dealerships, landscape and recreational areas.

SPECIFICATIONS:

16" 400, 320 and 250 Watt Floodlights have heavy duty die cast aluminum housing and durable bronze powdercoat finish. Extra heavy duty slipfitter included (bracket mount is available). Fixture has silicone gasketing, stainless steel hardware and a tempered glass lens. Front lens assembly is fully hinged for easy relamping and maintenance.

LAMP INCLUDED

DIMENSIONS:

	H	W	D
FL	17"	16.5"	7.2"

FLBR



CATALOG NO.	UPC CODE	DESCRIPTION	VOLTS	BALLAST	LAMP	BASE	SHIPPING WEIGHT (LBS)
FL400SQ	05868	Large Flood 400 Watt Sodium	120/208/240/277	QUAD CWA	ED18	mogul	30
FL250SQ »	05869	Large Flood 250 Watt Sodium	120/208/240/277	QUAD CWA	ED18	mogul	28
FL320MHQP*	06469	Large Flood 320 Watt Metal Halide Pulse Start	120/208/240/277	QUAD PULSE	ED28	mogul	36
FL250MHQP*	06470	Large Flood 250 Watt Metal Halide Pulse Start	120/208/240/277	QUAD PULSE	ED28	mogul	32
FLBR	05397	Bracket Mount for FL Series - 250, 320 & 400 Watt Floods					

» Subject to prior sale

1000 WATT FLOODLIGHT



FLHBR



APPLICATIONS:

Large area perimeter and security lighting: Industrial, storage yards, parking areas, auto dealerships, landscape and recreational areas.

SPECIFICATIONS:

23" 1000 Watt Floodlights have heavy duty die cast aluminum housing and durable bronze powdercoat finish. Extra heavy duty slipfitter included (bracket mount is available). Fixture has silicone gasketing, stainless steel hardware and a tempered glass lens. Front lens assembly is fully hinged for easy relamping and maintenance.

LAMP INCLUDED

DIMENSIONS:

	H	W	D
FLH	29"	23.75"	10.25"

for Wire Guard & Safety Cable (recommended) see p.64

CATALOG NO.	UPC CODE	DESCRIPTION	VOLTS	BALLAST	LAMP	BASE	SHIPPING WEIGHT (LBS)
FLH1000MHQ	05864	1000 Watt Flood Metal Halide	120/208/240/277	QUAD CWA	ED37	mogul	52
FLH1000SQ	05865	1000 Watt Flood Sodium	120/208/240/277	QUAD CWA	ED25	mogul	57
FLHBR	05398	Bracket mount for 1000 Watt Flood - FLH Series					

INCANDESCENT FLOODLIGHT



APPLICATIONS:

Incandescent: General purpose floodlighting
 Quartz: Accent, security, landscape, facades, signs and general purpose floodlighting

SPECIFICATIONS:

The Non-metallic Par Holder features an oversized backplate designed specially to cover gaps where cutouts for boxes are too big. The extra deep backplate also fits over a flush-mounted pancake box to provide a good fit and appearance. Both par holders swivel side to side and up and down and can be securely locked.

DIMENSIONS:

BACKPLATE DIAMETER

PHNM 5.25"

CATALOG NO.	UPC CODE	DESCRIPTION	LAMP TYPE	SHIPPING WEIGHT (LBS)
PHNM300	05892	300 Watt Nonmetallic Twin Par Holder	PAR 38	13.5

QUARTZ BULLETS - SINGLE AND DUAL



APPLICATIONS:

Accent, security, landscape, facades, signs and general purpose floodlighting

SPECIFICATIONS:

Quartz Bullets feature solid die cast aluminum construction, impact resistant, glass lens and aluminum reflector; corrosion resistant hardware. UL and CUL listed for wet location use. Powerful and compact, these floods are excellent for lighting small outdoor areas.

LAMPS INCLUDED

DIMENSIONS:

	H	W	EXT
QBS	3.5"	3.3"	3.9"
QBD100	5.75"	5.75"	4.6"
QBD200	9.25"	5.75"	5.25"

1



2

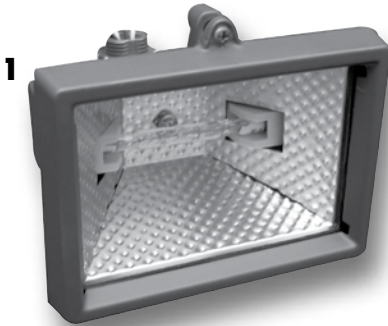


3



CATALOG NO.	UPC CODE	FIG. NO.	DESCRIPTION	VOLTS	SHIPPING WEIGHT (LBS)
QBS50B	05904	1	Quartz Bullet Single 50 Watt Bronze	120V	2
QBD100W	05905	2	Quartz Bullet Dual 50 Watt White	120V	3.5
QBD200B	05906	3	Quartz Bullet Dual 100 Watt Bronze	120V	3.5

QUARTZ FLOODLIGHT



APPLICATIONS:

Accent, security, landscape, facades, signs and general purpose floodlighting

SPECIFICATIONS:

NSi Lighting's Quartz halogen Floodlights feature solid one piece die cast aluminum construction, high impact resistant tempered glass lens, aluminum reflector and corrosion resistant hardware. Silicone rubber gasketing is included to prevent leakage from outside. UL and CUL listed for wet location use. 150 Watt is perfect for lighting small outdoor areas; the others are excellent for general purpose floodlighting. Mounts with 1/2" NPT knuckle.

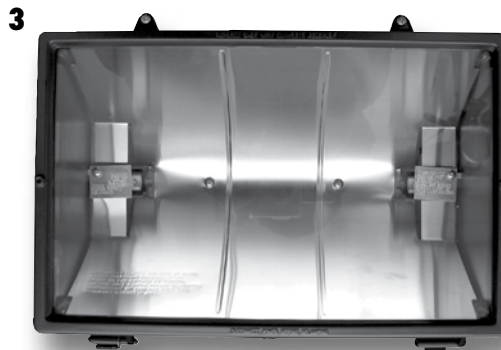
LAMPS INCLUDED

DIMENSIONS:

	H	W	EXT
QF150B	3.5"	3.3"	3.9"
QF300-500B	5.75"	5.75"	4.6"
QF1500B	9.25"	5.75"	5.25"



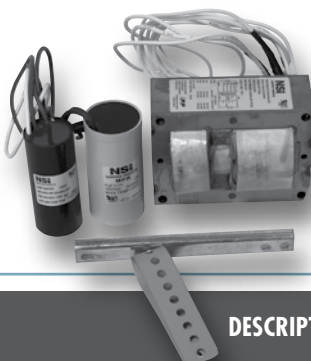
**INCLUDES 2 LAMPS
300/500 WATT**



CATALOG NO.	UPC CODE	FIG. NO.	DESCRIPTION	VOLTS	SHIPPING WEIGHT (LBS)
QF150B	05899	1	150 Watt Quartz Flood Bronze with lamp	120	1.7
QF300-500B	05901	2	Quartz Flood Bronze with 300/500 Watt lamps	120	3
QF1500B	05902	3	1500 Watt Quartz Flood Bronze with lamp	240	7

LIGHTING PRODUCTS

HIGH PRESSURE SODIUM BALLAST KIT ONLY



CATALOG NO.	UPC CODE	DESCRIPTION	SHIPPING WEIGHT (LBS.)
BKS35R »	05432	35 Watt HPS Reactor 120V – Cap, Ignitor & Brackets	2.4
BKS50R	05433	50 Watt HPS Reactor 120V – Cap, Ignitor & Brackets	2.8
BKS70R	05434	70 Watt HPS Reactor 120V – Cap, Ignitor & Brackets	3.4
BKS100R	05435	100 Watt HPS Reactor 120V – Cap, Ignitor & Brackets	3.6
BKS50Q	05436	50 Watt HPS Quad – Cap, Ignitor & Brackets	3.8
BKS70Q	05437	70 Watt HPS Quad – Cap, Ignitor & Brackets	6.9
BKS100Q	05438	100 Watt HPS Quad – Cap, Ignitor & Brackets	8.6
BKS150Q	05439	150 Watt HPS Quad – Cap, Ignitor & Brackets	10
BKS250Q	05441	250 Watt HPS Quad – Cap, Ignitor & Brackets	13.7
BKS250480	05442	250 Watt HPS 480v – Cap, Ignitor & Brackets	13.9
BKS400Q	05443	400 Watt HPS Quad – Cap, Ignitor & Brackets	16.5
BKS400480	05444	400 Watt HPS 480v – Cap, Ignitor & Brackets	19.7
BKS1000Q	05390	1000 Watt HPS Quad – Cap, Ignitor & Brackets	25
BKS1000480	05391	1000 Watt HPS 480v – Cap, Ignitor & Brackets	26

METAL HALIDE BALLAST KIT ONLY



CATALOG NO.	UPC CODE	DESCRIPTION	SHIPPING WEIGHT (LBS.)
BKM50Q	05447	50 Watt Metal Halide Quad – Cap, Ignitor & Brackets	5.8
BKM70Q	05448	70 Watt Metal Halide Quad – Cap, Ignitor & Brackets	7.3
BKM100120	05449	100 Watt Metal Halide 120V- Cap, Ignitor & Brackets	3.6
BKM100Q	05450	100 Watt Metal Halide Quad – Cap, Ignitor & Brackets	8
BKM175Q	05452	175 Watt Metal Halide Quad – Cap & Brackets	10.7
BKM250Q	05453	250 Watt Metal Halide Quad – Cap & Brackets	12
BKM250480 »	05454	250 Watt Metal Halide 480V – Cap & Brackets	11.6
BKM400Q	05455	400 Watt Metal Halide Quad – Cap & Brackets	14.6
BKM400480	05456	400 Watt Metal Halide 480v – Cap & Brackets	14.1
BKM1000Q	05457	1000 Watt Metal Halide Quad – Cap & Brackets	24.7
BKM1000480	05458	1000 Watt Metal Halide 480v – Cap & Brackets	25
BKM150QP*	06463	150 Watt Metal Halide Pulse – Cap, Ignitor & Brackets	7.68
BKM250QP*	06464	250 Watt Metal Halide Pulse – Cap, Ignitor & Brackets	10.3
BKM320QP*	06465	320 Watt Metal Halide Pulse – Cap, Ignitor & Brackets	12.7

» Subject to prior sale



HIGH PRESSURE SODIUM BALLAST KIT WITH LAMP INCLUDED



CATALOG NO.	UPC CODE	DESCRIPTION	SHIPPING WEIGHT (LBS.)
BKS50RL-MED	05460	50 Watt HPS Reactor 120V – Cap, Ignitor & Brackets w/Medium Lamp	3.8
BKS70RL-MED	05461	70 Watt HPS Reactor 120V – Cap, Ignitor & Brackets w/Medium Lamp	4.4
BKS100RL-MED	05462	100 Watt HPS Reactor 120V – Cap, Ignitor & Brackets w/Medium Lamp	4.6
BKS50QL-MED	05463	50 Watt HPS Quad – Cap, Ignitor & Brackets w/Medium Lamp	4.8
BKS70QL-MED	05464	70 Watt HPS Quad – Cap, Ignitor & Brackets w/Medium Lamp	7.9
BKS100QL-MED	05465	100 Watt HPS Quad – Cap, Ignitor & Brackets w/Medium Lamp	9.6
BKS150QL-MED	05466	150 Watt HPS Quad – Cap, Ignitor & Brackets w/Medium Lamp	11
BKS250QL-M	05468	250 Watt HPS Quad – Cap, Ignitor & Brackets w/Mogul Lamp	14.7
BKS250480L-M	05469	250 Watt HPS 480v – Cap, Ignitor & Brackets w/Mogul Lamp	14.9
BKS400QL-M	05470	400 Watt HPS Quad – Cap, Ignitor & Brackets w/Mogul Lamp	17.5
BKS400480L-M	05471	400 Watt HPS 480v – Cap, Ignitor & Brackets w/Mogul Lamp	20.7
BKS1000QL-M	05445	1000 Watt HPS Quad – Cap, Ignitor & Brackets w/Mogul Lamp	27
BKS1000480L-M	05446	1000 Watt HPS 480v – Cap, Ignitor & Brackets w/Mogul Lamp	28

METAL HALIDE BALLAST KIT WITH LAMP INCLUDED



CATALOG NO.	UPC CODE	DESCRIPTION	SHIPPING WEIGHT (LBS.)
BKM50QL-MED	05474	50 Watt Metal Halide Quad – Cap, Ignitor & Brackets with Medium Lamp	6.8
BKM70QL-MED	05475	70 Watt Metal Halide Quad – Cap, Ignitor & Brackets with Medium Lamp	8.3
BKM100QL-MED	05477	100 Watt Metal Halide Quad – Cap, Ignitor & Brackets with Medium Lamp	9
BKM150QL-MED	05478	150 Watt Metal Halide Quad – Cap, Ignitor & Brackets with Medium Lamp	9.5
BKM175QL-MED	05479	175 Watt Metal Halide Quad – Cap & Brackets with Medium Lamp	11.7
BKM175QL-M	05517	175 Watt Metal Halide Quad – Cap & Brackets with Mogul Lamp	11.7
BKM250QL-M	05480	250 Watt Metal Halide Quad – Cap & Brackets with Mogul Lamp	13
BKM250480L-M »	05481	250 Watt Metal Halide 480v – Cap & Brackets with Mogul Lamp	12.6
BKM400QL-M	05482	400 Watt Metal Halide Quad – Cap & Brackets with Mogul Lamp	15.6
BKM400480L-M	05483	400 Watt Metal Halide 480v – Cap & Brackets with Mogul Lamp	15.1
BKM1000QL-M	05484	1000 Watt Metal Halide Quad – Cap & Brackets with Mogul Lamp	26
BKM1000480L-M	05485	1000 Watt Metal Halide 480v – Cap & Brackets with Mogul Lamp	26
BKM150QPL-MED*	06466	150 Watt Metal Halide Pulse Quad – Cap, Ignitor & Brackets w/Medium Lamp	8.63
BKM250QPL-M*	06467	250 Watt Metal Halide Pulse Quad – Cap, Ignitor & Brackets w/Mogul Lamp	11.3
BKM320QPL-M*	06468	320 Watt Metal Halide Pulse Quad – Cap, Ignitor & Brackets w/Mogul Lamp	13.7

» Subject to prior sale



FLUORESCENT DUSK-TO-DAWN

APPLICATIONS:

Perimeter, security, farm, residential, utility, roadway

SPECIFICATIONS:

Die cast aluminum housing medium base 65 watt self ballasted CFL lamp included. Twist lock dusk to dawn photo-control included with one piece 21" arm. 10" UV stabilized prismatic acrylic lens. Mounting hardware included. UL/cUL listed for wet location use.

LAMP INCLUDED

DIMENSIONS:

	<i>H</i>	<i>W</i>	<i>EXT</i>
DTD65FL21	17"	10"	21.5"



CATALOG NO.	UPC CODE	DESCRIPTION	VOLTS	BALLAST	LAMP	BASE	SHIPPING WEIGHT (LBS.)
DTD65FL21	07185	Dusk To Dawn 65 Watt Fluorescent with 21" arm	120V	ELECTRONIC	CFL	MED	7

DUSK-TO-DAWN



**PROTECTED LAMP
NO BOTTOM LENS NEEDED**

APPLICATIONS:

Perimeter, security, farm, residential, utility, roadway

SPECIFICATIONS:

Die cast aluminum housing and no bottom lens needed (MH protected lamp included). Twist lock dusk-to-dawn photocontrol included with one piece 21" arm. Mounting hardware included. UV Resistant Acrylic Lens. UL/CUL listed for wet location use.

LAMP INCLUDED

DIMENSIONS:

	H	W	E
DTD100MH21	17.5"	12.13"	26.63"

CATALOG NO.	UPC CODE	DESCRIPTION	VOLTS	BALLAST	LAMP	BASE	SHIPPING WEIGHT (LBS)
DTD100MH21	05956	100 Watt MH Dusk-to-Dawn	120	HX-NPF	ED17	MED	8.5

**PROTECTED LAMP
NO BOTTOM LENS NEEDED**

APPLICATIONS:

Perimeter, security, farm, residential, utility, roadway

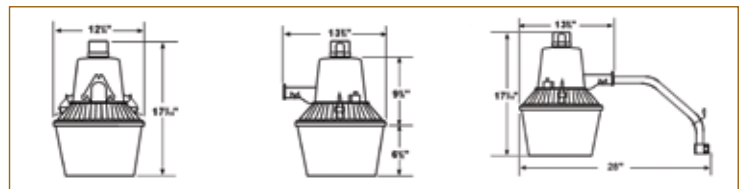
SPECIFICATIONS:

Die cast aluminum housing and no bottom lens needed (MH protected lamp included). Porcelain medium base 4KV socket and twist lock dusk-to-dawn photocontrol included. UV stabilized prismatic acrylic refractor and the 12" refractor attaches with clips 24" arm. UL/CUL listed for wet location use.

LAMP INCLUDED

DIMENSIONS:

	H	W	E
DTDNE100MH24	17.44"	13.75"	28"

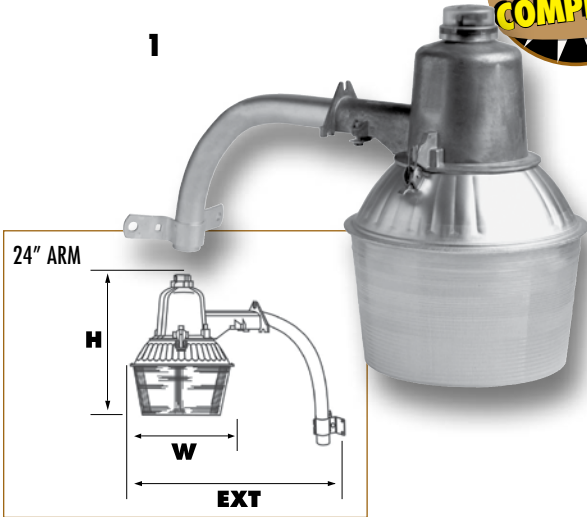


CATALOG NO.	UPC CODE	DESCRIPTION	VOLTS	BALLAST	LAMP	BASE	SHIPPING WEIGHT (LBS)
DTDNE100MH24	05999	100 Watt MH Dusk-to-Dawn, 24" arm	120	HX-NPF	ED17	MED	10

HIGH PRESSURE SODIUM DUSK-TO-DAWN



1



APPLICATIONS:

Perimeter, security, farm, residential, utility, roadway

SPECIFICATIONS:

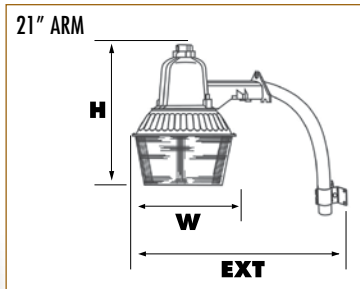
NSi's Security Lighting offering includes dusk-to-dawn lighting for perimeter, roadway and security lighting; in die cast aluminum housing with mill finish and UV-stabilized acrylic lens. Available with 24" arm (NEMA), 21" arm and mounting hardware included. Lampholder is UL approved E-39, 4KV. Excellent for parking lot and off-street lighting, entrance ways and other general purpose lighting applications. UL/CUL listed for wet location use.

LAMP INCLUDED

DIMENSIONS:

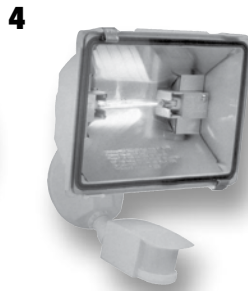
	H	W	EXT
DTDNE150S24	17"	12"	21.5"
DTD150S21	17"	12"	19.5"

2



CATALOG NO.	UPC CODE	FIG. NO.	DESCRIPTION	VOLTS	BALLAST	LAMP	BASE	SHIPPING WEIGHT (LBS.)
DTDNE150S24	05341	1	NEMA Dusk To Dawn 150 Watt Sodium with 24"arm	120V	R-NPF	ED23.5	mogul	18
DTD150S21	05343	2	Dusk To Dawn 150 Watt Sodium with 21"arm	120V	R-NPF	ED23.5	mogul	16

MOTION LIGHTS



APPLICATIONS:

Where motion-activated security lighting is needed; residential, commercial

SPECIFICATIONS:

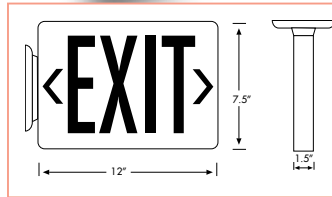
Motion Lighting in die cast housing, and 180° view polycarbonate sensors. For use in garages, backyard and more. In bronze or white with automatic motion detector and dusk to dawn operation. Head is fully adjustable for direction and sensitivity.

DIMENSIONS:

	<i>H</i>	<i>W</i>	<i>EXT</i>
MSQ250B	11.2"	10"	7.9"
MSPAR2150B	9"	10.6"	7.9"
MSSP2150B	10.75"	16.9"	7.9"
MSQ500W	8.6"	6.5"	9.5"

CATALOG NO.	UPC CODE	FIG. NO.	DESCRIPTION	VOLTS	LAMP	SHIPPING WEIGHT (LBS)
MSQ250B	05347	1	Motion 2 x 50 Watt Bullet Bronze	120	included	2.5
MSPAR2150B	05349	2	Motion 2 x 150 Watt Par 38 Bronze	120	not included	1.75
MSSP2150B	05350	3	Motion 2 x 150 Watt Sheilded Par 38 Bronze	120	not included	3.6
MSQ500W	05352	4	Motion 500 Watt Quartz White	120	included	2.3

LED EXIT LIGHT



APPLICATIONS:

Commercial, industrial, institutional, retail

SPECIFICATIONS:

NSi's low profile LED exit lights have fully automatic operation at 120 or 277 VAC with 25+ years LED lamp life. LED exit lights have a universal mounting canopy for side or top installation. Injection-molded V-O flame retardant high-impact thermoplastic housing with a low profile design and excellent energy savings.

NOTE: Remote Capable version available – call for special order quote.

CATALOG NO.	UPC CODE	FACE	TYPE	LETTERING	HOUSING	SHIPPING WEIGHT (LBS)
EXLRW	05215	two	AC	red	white	3
EXLBURW	05219	two	90 min. battery backup	red	white	3
EXLBUGW	05220	two	90 min. battery backup	green	white	3

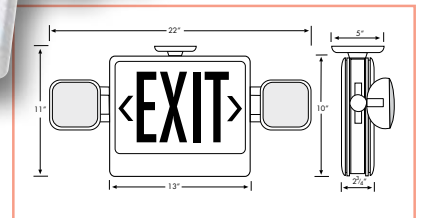
COMBINATION LED INCANDESCENT EXIT LIGHT

APPLICATIONS:

Commercial, industrial, institutional, retail

SPECIFICATIONS:

Our combination LED emergency light provides excellent energy savings and the LED lamp life of 25+ years. Automatic LVD (low voltage disconnect) and universal transformer for 120 or 277 VAC. Injection-molded V-O flame retardant high-impact thermoplastic housing and a 6 volt pure lead maintenance free battery with 90 minute operation. Two fully adjustable glare free lighting heads in a compact, modern design.

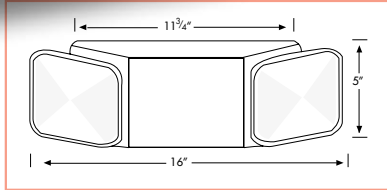


NOTE: Universal mounting canopy for ceiling installation

CATALOG NO.	UPC CODE	FACE	LETTERING	HOUSING	REMOTE	SHIPPING WEIGHT (LBS)
EEL2RW	05227	two	red	white	no	9
EEL2RWRM	05228	two	red	white	yes	10
EEL2GW	05235	two	green	white	no	10
EEL2GWRM	05236	two	green	white	yes	10

NOTE: Self-diagnostic and remote capable options are available for this fixture – call for special order quote.

TWIN HEAD EMERGENCY LIGHT



APPLICATIONS:

Commercial, industrial, institutional, retail

SPECIFICATIONS:

NSi twin-head emergency lighting unit gives a low profile appearance with automatic LVD (low voltage disconnect) and universal transformer for 120 or 277 VAC. Universal mounting plate with quick connect for labor saving installation. Injection-molded V-O flame retardant high-impact thermoplastic housing and a 6 volt sealed lead acid maintenance free battery with 90 minute operation. Environmentally-coated solid state charger. Listed for damp location use.

CATALOG NO.	UPC CODE	BATTERY	HOUSING	LAMP	SHIPPING WEIGHT (LBS)
EMTW	05281	6 Volt	white	2 x 5.4 Watt	4.25

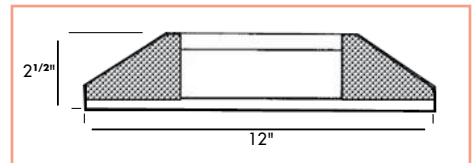
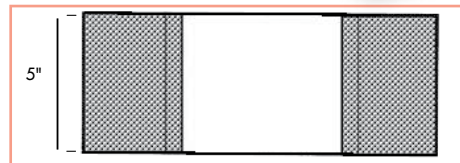
FIXED OPTICS EMERGENCY LIGHT

APPLICATIONS:

Commercial, industrial, institutional, retail

SPECIFICATIONS:

NSi's fixed optics emergency light gives fully automatic operation with automatic LVD (low voltage disconnect) and universal transformer for 120 or 277 VAC. Injection-molded V-O flame retardant high-impact thermoplastic housing and a 6 volt premium grade, sealed lead acid, maintenance free battery with 90 minute operation. Compact, low profile design in pleasing neutral finish with environmentally-coated solid state charger. Listed for damp location use.

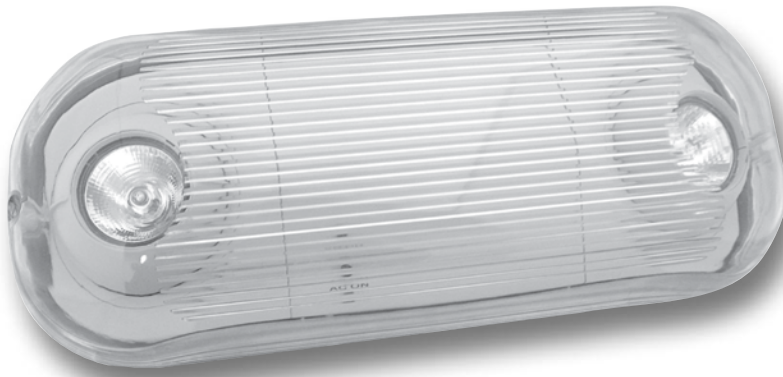


CATALOG NO.	UPC CODE	BATTERY	HOUSING	LAMP	SHIPPING
EMFW	05288	6 Volt	white	2 x 5.4 Watt	3

LIGHTING PRODUCTS

EMERGENCY & EXIT LIGHTING

WET LOCATION EMERGENCY LIGHT

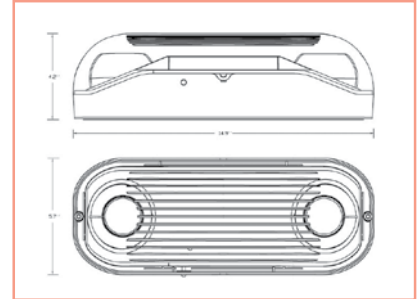


APPLICATIONS:

Commercial, industrial, institutional, retail

SPECIFICATIONS:

NSi's two head emergency light has dual 120/277 VAC operation. Sealed lead acid, rechargeable, maintenance-free battery and high-impact housing. Push-to-test switch and automatic, low-voltage disconnect (LVD). Completely self-contained and UL listed for wet locations.



CATALOG NO.	UPC CODE	DESCRIPTION	BATTERY TYPE	BATTERY	LAMP	SHIPPING WEIGHT (LBS)
EMTWMR16WL	06489	Wet Location twin head MR16 Emergency light-gray	SEALED LEAD ACID 90 MIN. OPERATION	6V	2 x 7 Watt MR-16 HALOGEN	4.25

EDGE LIT LED EXIT LIGHT

APPLICATIONS:

Commercial, industrial, institutional, retail

SPECIFICATIONS:

NSi's edge-lit LED exit lights combine a compact, low profile design engineered for an enhanced look with the low energy consumption of LED lighting. 120/277 volt operation. Install directional indicators in the field, standard AC and emergency units available. Aluminum/ acrylic housing.



CATALOG NO.	UPC CODE	TYPE	FACE	LETTERING	BATTERY	SHIPPING WEIGHT (LBS)
SURFACE						
ELXBU1R	05249	90 min. battery backup	one	red	6V	6
ELXBU1G	05250	90 min. battery backup	one	green	6V	6
ELX1R	05253	AC	one	red		5.25
ELX1G	05254	AC	one	green		5.25
ELX2G	05255	AC	two	green		6
RECESSED						
RELXBU1R	05256	90 min. battery backup	one	red	6V	7.4
RELXBU1G	05257	90 min. battery backup	one	green	6V	7.4
RELX1R	05260	AC	one	red		6.9
RELX2R	05261	AC	two	red		7.2
RELX1G	05262	AC	one	green		6.9
RELX2G	05263	AC	two	green		7.2

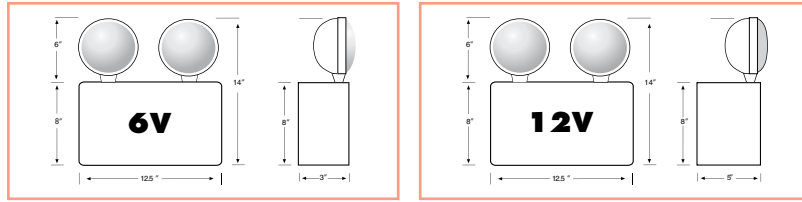
HEAVY DUTY EMERGENCY LIGHT

APPLICATIONS:

Commercial, industrial, institutional, retail

SPECIFICATIONS:

Our heavy duty emergency lighting unit has automatic LVD (low voltage disconnect) and universal transformer for 120 or 277 VAC. This heavy duty light comes standard with two fully adjustable glare-free lighting heads and side and top conduit KO's. 6 volt premium grade, sealed lead acid, maintenance free batteries included with 10 year life expectancy. Remote capability and easy installation. 6 volt units offer 7.2 watt lamps standard and 12 volt units offer 9 watt lamps standard. UL listed for damp location use.



CATALOG NO.	UPC CODE	WATTAGE CAPACITY	BATTERY	VOLTS	LAMP	SHIPPING WEIGHT (LBS)
EMHD506	05292	50 watt	6 Volts	120/277	13	7.5
EMHD5012	05293	50 watt	12 Volts	120/277	13	9
EMHD1006	05294	100 watt	6 Volts	120/277	18	7.5
EMHD10012	05295	100 watt	12 Volts	120/277	18	9

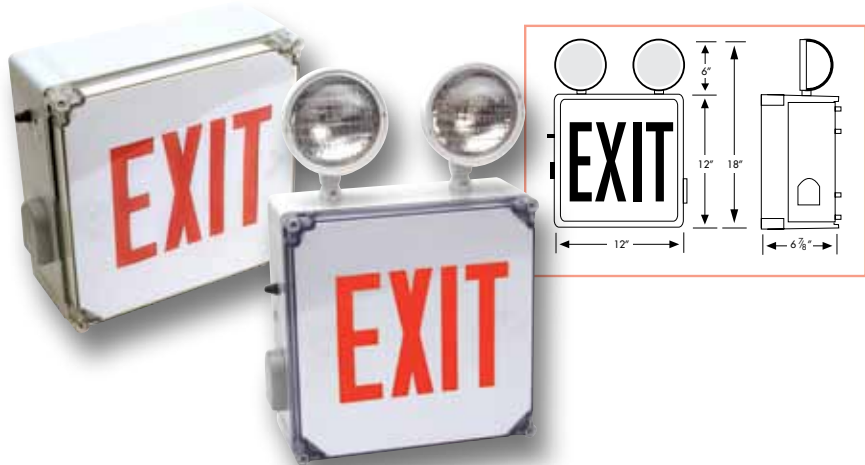
WET LOCATION LED EXIT LIGHT / TWO HEAD EMERGENCY UNIT

APPLICATIONS:

Commercial, industrial, institutional, retail

SPECIFICATIONS:

ABS, corrosion resistant UV stabilized enclosures meet NFPA, NEC, OSHA, NEC and local and state codes, making these energy-saving wet location LED exit lights great for corrosive or damaging environments. Universal 120/277 VAC operation with removable directional indicators and an 25+ year light source life expectancy.

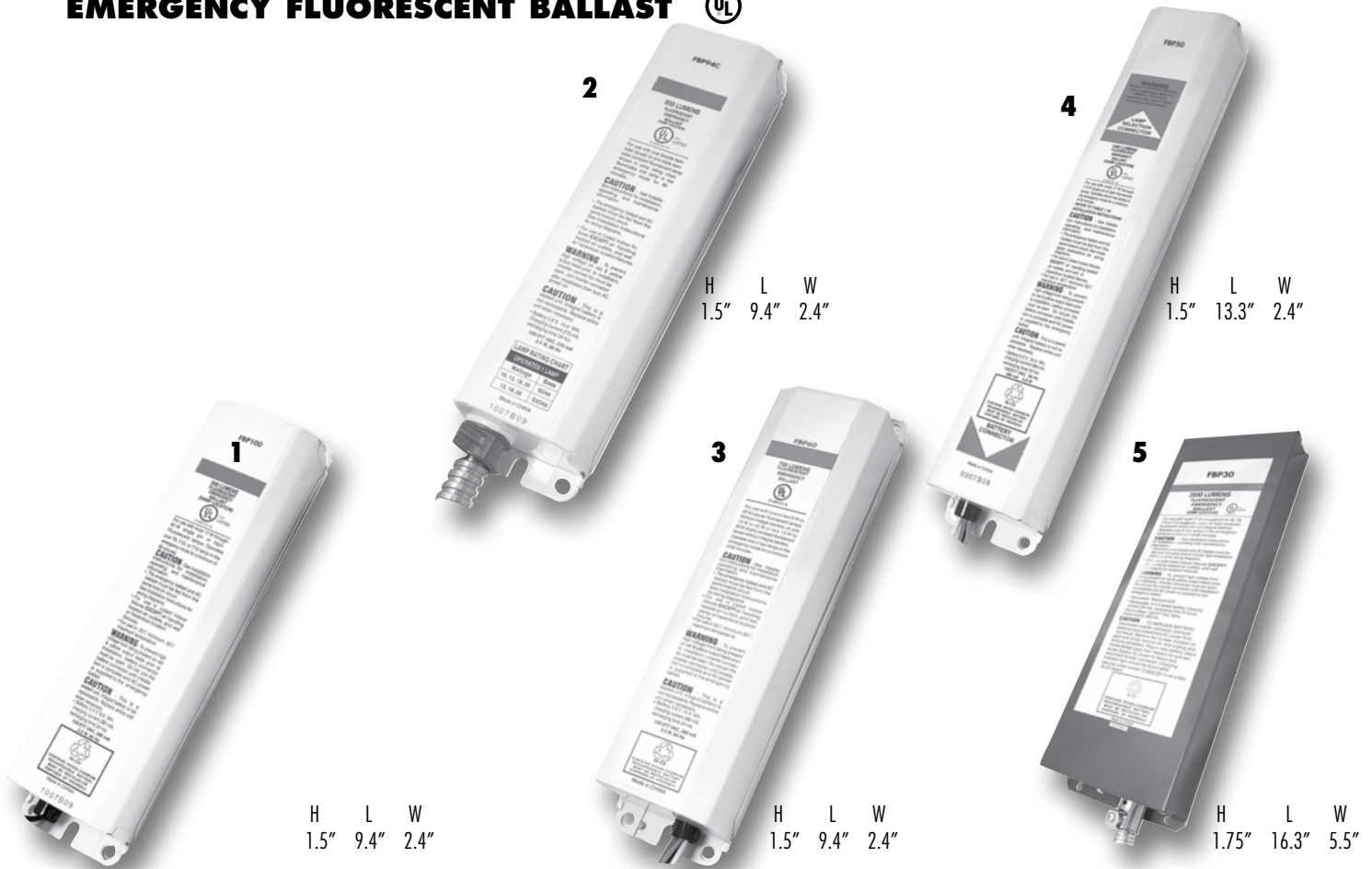


CATALOG NO.	UPC CODE	TYPE	LETTERING	HOUSING	BATTERY	SHIPPING
EXWLRW	05264	AC	red	white	-	7.4
EXWLGW	05265	AC	green	white	-	7.4
EXWLBURW	05268	90 min. battery backup	red	white	6V	7.6
EXWLBUGW	05269	90 min. battery backup	green	white	6V	7.6
EMWL26RW	05272	2-head emergency light	red	white	6V	9

LIGHTING PRODUCTS

EMERGENCY & EXIT LIGHTING

EMERGENCY FLUORESCENT BALLAST



MODEL	FBP100 (Fig. No. 1)	FBP94C (Fig. No. 2)	FBP60 (Fig. No. 3)	FBP50 (Fig. No. 4)	FBP30 (Fig. No. 5)
UPC CODE	05936	05393	05935	05934	05394
LUMENS	500	650	700	1400	3000
LINEAR LAMPS	Number of lamps supported				
2'-4' Rapid, Instant, or Energy Savings, T8-T12, HO, VHO	1		1 or 2	1 or 2	1 or 2
2'-8' Rapid, Instant, or Energy Savings, Circline T8-T12, HO, VHO			1	1	1
8W-28W- T5*	1		1	1 or 2	1 or 2
54W - T5HO				1 or 2	1 or 2
COMPACT FLUORESCENT LAMPS	Number of lamps supported				
13W-39W Twin, Quad or Triple (4-pin)		1			1 or 2
40W-42W Twin, Quad or Triple (4-pin)					1 or 2
17W-40W 4-pin compact	1		1 or 2	1 or 2	1 or 2
40W-55W 4-pin compact			1	1	1

*The ballast may not fit in a typical T5 fixture and needs to be remotely mounted.
All ballast are standard with dual 120/277V input. Damp location listed (0°C to 50°C)

REMOTE HEADS

1



2



3



4



CATALOG NO.	UPC CODE	FIG. NO.	WATTS	VOLTS	SHIPPING WEIGHT (LBS)
EMRH254	05303	1	5.4	two 6V	1
EMRH154	05304	2	5.4	one 6V	0.7
EMRH172	05305	2	7.2	one 6V	1
EMRHS6	05296	3	7.2	6V	1.5
EMRHD6	05282	4	2 x 7.2	6V	1.5

ACCESSORIES

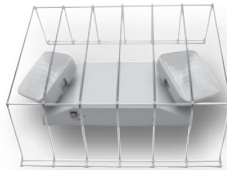
1



2



3



4



CATALOG NO.	UPC CODE	FIG. NO.	DESCRIPTION	SHIPPING WEIGHT (LBS)
ARETROHW	05298	1	LED Retrofit Kit red, hardwire	0.25
ARETOKIT	05299	2	LED Retrofit Kit RED w/adapters to fit candelabra, intermediate and DC bayonet	0.25
AEEWG	05301	3	Wire Guard for exits & emergency unit	1.1
AEEWG3	05302	4	Wire Guard for combo exits & emergency unit	2.2

DARK SKY FRIENDLY

NSi's Adjustable Wallpack is great for warehouses and general areas where light control is critical - and check out the value in our adjustable fixtures.



DUSK-TO-DAWN

Open the day with NSi's Security lighting for perimeter, roadway, parking lot, entrance ways and off-street lighting.

ENERGY SAVING FLUORESCENT

NSi's Heavy Duty Fluorescent Worklight uses less energy while helping you illuminate electrical work. This worklight burns cooler with less glare.



We work everyday to ensure that our products shine true with a full spectrum of product and value.

INDUCTION lamps are one of the newest energy saving lighting technologies developed in recent years. Induction lighting is based on a technology which is fundamentally different from that of traditional fluorescent or high intensity discharge (HID) lighting products. With no filaments and electrodes to burn out, these unique lamps can last up to 100,000 hours, making them virtually maintenance free.

INDUCTION LIGHTING INFORMATION

FEATURES	ADVANTAGES	BENEFITS
No electrode or filament to burn out. Electrolytic capacitors are high temperature (105°C) and high voltage (450v) resistant.	Long performance life, up to 100,000 hours. High luminous maintenance rate (95% after 2000 hours and 85% after 6000 hours)	Reduces relamping costs
Ballast power factor : up to .99 IC-controlled electronic ballast	High system efficiency: 50% greater than magnetic ballasts, 20% greater than conventional electronic ballasts	Reduces electricity costs by up to 90% compared to incandescent lamps, 75% compared to HID lamps, and 50% compared to compact fluorescent lamps
Color Rendering Index (CRI) of 80+ Color Temperature.	Enables color to be perceived correctly. Excellent lighting quality.	Increases safety and security. Increases productivity. Helps protect eyesight.
Amalgam <0.25mg	Coupled with the extremely long life, less mercury entering the waste stream.	Health and environmental safety.

INDUCTION VS. OTHER LIGHT SOURCES

LIGHT SOURCE	CRI	LUMENS/WATT	LIFESPAN (HOURS)
Incandescent	100	8-24	1000
Linear Fluorescent	51-91	41-104	10000 - 20000
Compact Fluorescent	80-90	50-83	8000 - 10000
Metal Halide	80-90	56-125	10000 - 20000
High Pressure Sodium	25	60-140	18000 - 24000
Induction	>80	80-90	100000

MEDIUM ARCHITECTURAL WALLPACK



LONG LAMP LIFE
ENERGY SAVINGS



APPLICATIONS:

Warehouse, perimeter lighting, security, retail

SPECIFICATIONS:

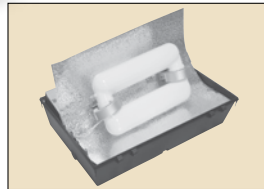
NSi Medium Architectural Wallpack has a prismatic borosilicate molded glass lens with die cast aluminum housing, hinged front frame and stainless steel hardware. 1/2" coin-plugs for conduit and photocell. This wallpack is listed for wet locations.

LAMP INCLUDED

DIMENSIONS:

	<i>H</i>	<i>W</i>	<i>D</i>
WPMX	12"	11.13"	7.9"

INSIDE DETAIL



CATALOG NO.	UPC CODE	DESCRIPTION	VOLTS	BALLAST	LAMP	SHIPPING WEIGHT (LBS)
WPMX40IND120	06483	Medium Architectural Wallpack 40 Watt	120	ELECTRONIC	INDUCTION	10
WPMX40IND277	06485	Medium Architectural Wallpack 40 Watt	277	ELECTRONIC	INDUCTION	10

LARGE ARCHITECTURAL WALLPACK



LONG LAMP LIFE
ENERGY SAVINGS



APPLICATIONS:

Warehouse, perimeter lighting, security, retail

SPECIFICATIONS:

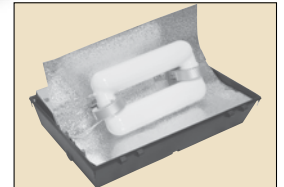
NSi Large Architectural Wallpack has a prismatic borosilicate molded glass lens with die cast aluminum housing, hinged front frame and stainless steel hardware. 1/2" coinplugs for conduit and photocell. This wallpack is listed for wet locations.

LAMP INCLUDED

DIMENSIONS:

	<i>H</i>	<i>W</i>	<i>D</i>
WPLX	13.25"	16.5"	10.63"

INSIDE DETAIL



CATALOG NO.	UPC CODE	DESCRIPTION	VOLTS	BALLAST	LAMP	SHIPPING WEIGHT (LBS)
WPLX80IND120	06485	Large Architectural Wallpack 80 Watt	120	ELECTRONIC	INDUCTION	19
WPLX80IND277	06486	Large Architectural Wallpack 80 Watt	277	ELECTRONIC	INDUCTION	19

INDUCTION LARGE DEEP WALLPACK



APPLICATIONS:

Warehouse, perimeter lighting, security, retail

SPECIFICATIONS:

NSi's Induction Large Deep Wallpack has die cast aluminum housing and hinged front frame with 1/2" coin plugs with O-rings for conduit and photocell. Textured architectural bronze powdercoat finish over a chromate conversion coating. This wallpack has an aluminum reflector and molded prismatic borosilicate glass lens. Cast-in template for mounting directly over a 4" recessed outlet box, or use 1/2" surface conduit. Listed for wet locations.

LAMP INCLUDED

DIMENSIONS:

	H	W	D
WPLD	9"	18.5"	18.875"

CATALOG NO.	UPC CODE	DESCRIPTION	VOLTS	BALLAST	LAMP
WPLD100IND120	06439	Large Deep Wallpack 100 Watt	120	ELECTRONIC	INDUCTION
WPLD100IND277	06440	Large Deep Wallpack 100 Watt	277	ELECTRONIC	INDUCTION
WPLD120IND120	06441	Large Deep Wallpack 120 Watt	120	ELECTRONIC	INDUCTION
WPLD120IND277	06442	Large Deep Wallpack 120 Watt	277	ELECTRONIC	INDUCTION

VANDAL RESISTANT GARAGE LIGHTER

APPLICATIONS:

Garage or Shop lighting

SPECIFICATIONS:

The Vandal Resistant Garage Lighter has a die cast aluminum housing 1/2" coinplugs for conduit and photocell on sides and back. Textured architectural bronze powdercoat finish over a chromate conversion coating. Extended clear prismatic polycarbonate lens with a white powdercoat steel reflector. Built-in template for mounting to an electrical box or use 1/2" surface conduit or downrod. Listed for wet locations.

LAMP INCLUDED

DIMENSIONS:

	H	D
GL	11.25"	15"



CATALOG NO.	UPC CODE	DESCRIPTION	VOLTS	BALLAST	LAMP	SHIPPING WEIGHT (LBS)
GL80IND120	06437	Garage Lighter 80 Watt	120	ELECTRONIC	INDUCTION	19
GL80IND277	06438	Garage Lighter 80 Watt	277	ELECTRONIC	INDUCTION	19

GET TO KNOW ALL THE PLAYERS

NSi

IS OFFERING YOU
INNOVATIVE PRODUCTS



TORK® POLARIS™ EASY-TWIST™ LIGHTING TORK®ALERT™

- Polar Insulated Connectors
- Easy-Twist Wire Connectors
- Split Bolts and Mechanical Connectors
- Splice Kits and Easy-Splice
- Miniterms and Switches
- Grounding Products
- Cable Ties
- Identification Solutions & Lockout/Tagout
- Wallpacks, Worklights and Vaportite Lighting Products
- Electromechanical Time Switches
- Photocontrols
- Pool and Spa
- Digital Controls
- Residential Timers

**...thousands of quality products
making life in the field easier and safer.
The Easy Team**

NSi INDUSTRIES, LLC

Innovative and Competitive. We make a good team.
Phone: 800.321.5847 • Fax: 800.841.5566 • www.nsiindustries.com

INDUCTION GARAGE/CANOPY LIGHTER



**LONG LAMP LIFE
ENERGY SAVINGS**



APPLICATIONS:

Garage lighting

SPECIFICATIONS:

NSi's Induction Garage/Canopy Lighter has heavy duty round die cast aluminum housing, chromate conversion coating and textured bronze finish. Clear polycarbonate prismatic optical housing with hinged gasket, ceiling mount and drop lens for ease to relamp. Adjustable optics for uplight and enhanced down light. Listed for damp locations.

LAMP INCLUDED

DIMENSIONS:

	H	W	DIA
GLD	12.25"	11"	16"

CATALOG NO.	UPC CODE	DESCRIPTION	VOLTS	BALLAST	LAMP	SHIPPING WEIGHT (LBS)
GLD80IND120	06481	Induction Garage/Canopy Lighter 80 Watt	120	ELECTRONIC	INDUCTION	16
GLD80IND277	06482	Induction Garage/Canopy Lighter 80 Watt	277	ELECTRONIC	INDUCTION	16

LARGE VANDAL RESISTANT CANOPY



**LONG LAMP LIFE
ENERGY SAVINGS**

APPLICATIONS:

Canopy, parking garages, loading docks

SPECIFICATIONS:

The Large Vandal Resistant Canopy has a die cast aluminum housing 1/2" coinplugs for conduit and photocell on two sides and back. Textured architectural bronze powdercoat finish over a chromate conversion coating. Clear prismatic polycarbonate lens with a white powdercoat steel reflector. Listed for wet locations.

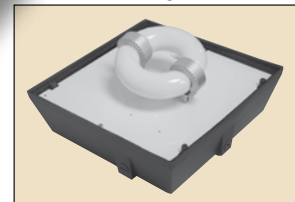
LAMP INCLUDED

DIMENSIONS:

	H	W	D
VRS	8.63"	12.4"	12.4"



INSIDE DETAIL



CATALOG NO.	UPC CODE	DESCRIPTION	VOLTS	BALLAST	LAMP	SHIPPING WEIGHT (LBS)
VRS40IND120	06479	Large Vandal Resistant Canopy 40 Watt	120	ELECTRONIC	INDUCTION	19
VRS40IND277	06480	Large Vandal Resistant Canopy 40 Watt	277	ELECTRONIC	INDUCTION	19

HIGH BAY



APPLICATIONS:

Over 20' high indoor: warehouse, retail, shops

SPECIFICATIONS:

This High Bay product has heavy duty die cast aluminum housing, white powdercoat finish over a chromate conversion coating, electrical box with malleable hook; with a 22" prismatic acrylic reflector. Listed for dry locations.

LAMP INCLUDED

DIMENSIONS:

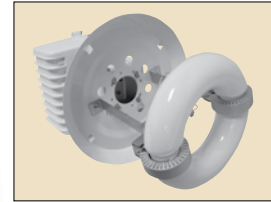
	H	DIA
HBAC	25.5"	22"



**LONG LAMP LIFE
ENERGY SAVINGS**



INSIDE DETAIL



CATALOG NO.	UPC CODE	DESCRIPTION	VOLTS	BALLAST	LAMP	SHIPPING WEIGHT (LBS)
HBAC2280IND120	06477	High Bay 22" Acrylic 80 Watt	120	ELECTRONIC	INDUCTION	13
HBAC2280IND277	06478	High Bay 22" Acrylic 80 Watt	277	ELECTRONIC	INDUCTION	13
HBAC22200IND120	06393	High Bay 22" Acrylic 200 Watt	120	ELECTRONIC	INDUCTION	13
HBAC22200IND277	06395	High Bay 22" Acrylic 200 Watt	277	ELECTRONIC	INDUCTION	13
HBAC22200IND120DL	06394	High Bay 22" Acrylic Drop Lens 200 Watt	120	ELECTRONIC	INDUCTION	15
HBAC22200IND277DL	06396	High Bay 22" Acrylic Drop Lens 200 Watt	277	ELECTRONIC	INDUCTION	15

DELUXE COBRAHEAD



**LONG LAMP LIFE
ENERGY SAVINGS**



APPLICATIONS:

Highway, secondary roads and off street area lighting

SPECIFICATIONS:

Die cast construction, hinged front frame with stainless steel "no-tools needed" clips. Internal ballast tray. Smooth gray powdercoat finish over a chromate conversion coating. Photocell adaptable. Specular aluminum reflector with molded sag glass lens. Accepts 2 3/8" diameter mounting arm. Listed for wet locations.

LAMP INCLUDED

DIMENSIONS:

	H	W	D
CH	11"	16"	36.75"

CATALOG NO.	UPC CODE	DESCRIPTION	VOLTS	BALLAST	LAMP	SHIPPING WEIGHT (LBS)
CH80IND120	06435	Cobrahead 80 Watt	120	ELECTRONIC	INDUCTION	30
CH80IND277	06436	Cobrahead 80 Watt	277	ELECTRONIC	INDUCTION	30
CH120IND120	06429	Cabrahead 120 Watt	120	ELECTRONIC	INDUCTION	32
CH120IND277	06430	Cabrahead 120 Watt	277	ELECTRONIC	INDUCTION	32
CH150IND120	06431	Cobrahead 150 Watt	120	ELECTRONIC	INDUCTION	34
CH150IND277	06432	Cobrahead 150 Watt	277	ELECTRONIC	INDUCTION	34
CH200IND120	06433	Cobrahead 200 Watt	120	ELECTRONIC	INDUCTION	36
CH200IND277	06434	Cobrahead 200 Watt	277	ELECTRONIC	INDUCTION	36

16" AREA FLOODLIGHT



APPLICATIONS:

Large area perimeter and security lighting: Industrial, storage yards, parking areas, auto dealerships, landscape and recreational areas.

SPECIFICATIONS:

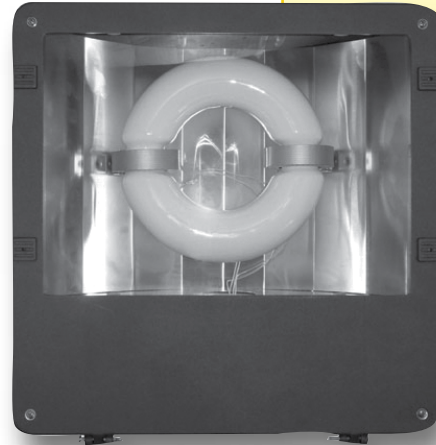
The 16" Area Floodlight has a heavy duty die cast aluminum housing and hinged top frame, 1/2" coin plugs for conduit & photocell, textured architectural bronze powder finish over a chromate conversion coating. Aluminum smooth reflector with tempered flat clear glass lens. 2-piece swivel bracket, adjustable slipfitter for mounting. Listed for wet locations.

LAMP INCLUDED

DIMENSIONS:

FL	H	W	D
	16.63"	16.13"	7"

**LONG LAMP LIFE
ENERGY SAVINGS**

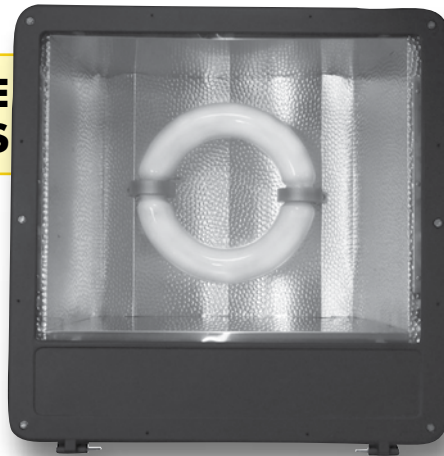


CATALOG NO.	UPC CODE	DESCRIPTION	VOLTS	BALLAST	LAMP	SHIPPING WEIGHT (LBS)
FL80IND120BR	06421	16" FLOOD 80 WATT BRACKET MOUNT	120	ELECTRONIC	INDUCTION	24
FL80IND277BR	06423	16" FLOOD 80 WATT BRACKET MOUNT	277	ELECTRONIC	INDUCTION	24
FL80IND120SF	06422	16" FLOOD 80 WATT SLIPFITTER MOUNT	120	ELECTRONIC	INDUCTION	24
FL80IND277SF	06424	16" FLOOD 80 WATT SLIPFITTER MOUNT	277	ELECTRONIC	INDUCTION	24

23" AREA FLOODLIGHT



**LONG LAMP LIFE
ENERGY SAVINGS**



APPLICATIONS:

Large area perimeter and security lighting: Industrial, storage yards, parking areas, auto dealerships, landscape and recreational areas.

SPECIFICATIONS:

NSi's 23" Area Floodlight has die cast aluminum housing & hinged front frame, safety cable restraint, 1/2" coin plugs with O-rings for conduit & photocell, textured architectural bronze powdercoat finish over a chromate conversion coating. Aluminum wide angle reflector with tempered flat clear glass lens. Mount with 2-piece swivel bracket, adjustable slipfitter. Listed for wet locations.

LAMP INCLUDED

DIMENSIONS:

FLH	H	W	D
	24.5"	24"	10.25"

CATALOG NO.	UPC CODE	DESCRIPTION	VOLTS	BALLAST	LAMP	SHIPPING WEIGHT (LBS)
FLH200IND120BR	06425	23" FLOOD 200 WATT BRACKET MOUNT	120	ELECTRONIC	INDUCTION	47
FLH200IND120SF	06427	23" FLOOD 200 WATT SLIPFITTER MOUNT	120	ELECTRONIC	INDUCTION	47
FLH200IND277BR	06426	23" FLOOD 200 WATT BRACKET MOUNT	277	ELECTRONIC	INDUCTION	47
FLH200IND277SF	06428	23" FLOOD 200 WATT SLIPFITTER MOUNT	277	ELECTRONIC	INDUCTION	47

MEDIUM LOW PROFILE SHOEBOX TYPE 2 REFLECTOR



APPLICATIONS:

Parking areas, access roadways and other general off street area lighting applications.

SPECIFICATIONS:

Medium Low Profile Shoebox is formed 2-piece aluminum housing, continuous welded on all seams, textured bronze powdercoat finish. Tempered flat glass lens with specular Type II reflector. Mount with included extruded mounting arm. Listed for wet locations.

LAMP INCLUDED

DIMENSIONS:

	H	W	D
SBMLPT2	8.5"	18"	36"

**LONG LAMP LIFE
ENERGY SAVINGS**



**ARRA
COMPLIANT**



CATALOG NO.	UPC CODE	DESCRIPTION	REFLECTOR	VOLTS	BALLAST	LAMP
SBMLPT2100IND120	01724	MEDIUM LOW PROFILE SHOEBOX 100 WATT	Type II	120	ELECTRONIC	INDUCTION
SBMLPT2100IND277	01725	MEDIUM LOW PROFILE SHOEBOX 100 WATT	Type II	277	ELECTRONIC	INDUCTION
SBMLPT2120IND120	01726	MEDIUM LOW PROFILE SHOEBOX 120 WATT	Type II	120	ELECTRONIC	INDUCTION
SBMLPT2120IND277	01727	MEDIUM LOW PROFILE SHOEBOX 120 WATT	Type II	277	ELECTRONIC	INDUCTION

LARGE LOW PROFILE SHOEBOX TYPE 2 REFLECTOR



APPLICATIONS:

Parking areas, access roadways and other general off street area lighting applications.

SPECIFICATIONS:

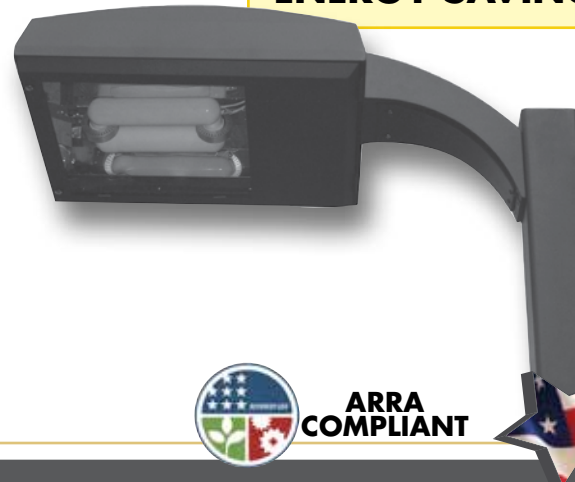
Large Low Profile Shoebox is formed 2-piece aluminum housing, continuous welded on all seams, textured bronze powdercoat finish. Tempered flat glass lens with specular Type II reflector. Mount with included extruded mounting arm. Listed for wet locations.

LAMP INCLUDED

DIMENSIONS:

	H	W	D
SBLLPT2	10"	20"	39.25"

**LONG LAMP LIFE
ENERGY SAVINGS**



**ARRA
COMPLIANT**



CATALOG NO.	UPC CODE	DESCRIPTION	REFLECTOR	VOLTS	BALLAST	LAMP
SBLLPT2120IND120	01728	LARGE LOW PROFILE SHOEBOX 120 WATT	Type II	120	ELECTRONIC	INDUCTION
SBLLPT2120IND277	01729	LARGE LOW PROFILE SHOEBOX 120 WATT	Type II	277	ELECTRONIC	INDUCTION
SBLLPT2150IND120	01730	LARGE LOW PROFILE SHOEBOX 150 WATT	Type II	120	ELECTRONIC	INDUCTION
SBLLPT2150IND277	01731	LARGE LOW PROFILE SHOEBOX 150 WATT	Type II	277	ELECTRONIC	INDUCTION
SBLLPT2200IND120	01732	LARGE LOW PROFILE SHOEBOX 200 WATT	Type II	120	ELECTRONIC	INDUCTION
SBLLPT2200IND277	01733	LARGE LOW PROFILE SHOEBOX 200 WATT	Type II	277	ELECTRONIC	INDUCTION

MEDIUM SHOEBOX TYPE 3 REFLECTOR



APPLICATIONS:

Parking areas, access roadways and other general off street area lighting applications.

SPECIFICATIONS:

NSi's Medium Shoebox Type 3 Reflector is formed 2-piece aluminum housing & hinged front frame, continuous welded on all seams, textured bronze powdercoat finish. Tempered flat glass lens with specular type III reflector. Mount with extruded mounting arm in 6", 10", or 14" length. Listed for wet locations.

LAMP INCLUDED

DIMENSIONS:

	<i>H</i>	<i>W</i>	<i>D</i>
SBMT3	8"	15"	21.88"



**ARRA
COMPLIANT**



CATALOG NO.	UPC CODE	DESCRIPTION	REFLECTOR	ARM LENGTH	VOLTS	BALLAST	LAMP
SBMT380IND120-6	01646	MEDIUM SHOEBOX 80 WATT	Type III	6"	120	ELECTRONIC	INDUCTION
SBMT380IND120-10	01647	MEDIUM SHOEBOX 80 WATT	Type III	10"	120	ELECTRONIC	INDUCTION
SBMT380IND120-14	01648	MEDIUM SHOEBOX 80 WATT	Type III	14"	120	ELECTRONIC	INDUCTION
SBMT380IND277-6	01649	MEDIUM SHOEBOX 80 WATT	Type III	6"	277	ELECTRONIC	INDUCTION
SBMT380IND277-10	01650	MEDIUM SHOEBOX 80 WATT	Type III	10"	277	ELECTRONIC	INDUCTION
SBMT380IND277-14	01651	MEDIUM SHOEBOX 80 WATT	Type III	14"	277	ELECTRONIC	INDUCTION
SBMT3100IND120-6	01652	MEDIUM SHOEBOX 100 WATT	Type III	6"	120	ELECTRONIC	INDUCTION
SBMT3100IND120-10	01653	MEDIUM SHOEBOX 100 WATT	Type III	10"	120	ELECTRONIC	INDUCTION
SBMT3100IND120-14	01654	MEDIUM SHOEBOX 100 WATT	Type III	14"	120	ELECTRONIC	INDUCTION
SBMT3100IND277-6	01655	MEDIUM SHOEBOX 100 WATT	Type III	6"	277	ELECTRONIC	INDUCTION
SBMT3100IND277-10	01656	MEDIUM SHOEBOX 100 WATT	Type III	10"	277	ELECTRONIC	INDUCTION
SBMT3100IND277-14	01657	MEDIUM SHOEBOX 100 WATT	Type III	14"	277	ELECTRONIC	INDUCTION

LARGE SHOEBOX TYPE 3 REFLECTOR

APPLICATIONS:

Parking areas, access roadways and other general off street area lighting applications.

SPECIFICATIONS:

NSi's Large Shoebox Type 3 Reflector is formed 2-piece aluminum housing & hinged front frame, continuous welded on all seams, textured bronze powdercoat finish. Tempered flat glass lens with specular type III reflector. Mount with extruded mounting arm in 6", 10", or 14" length. Listed for wet locations.

LAMP INCLUDED

DIMENSIONS:

	H	W	D
SBLT3	10"	20.38"	26.38"



**ARRA
COMPLIANT**



CATALOG NO.	UPC CODE	DESCRIPTION	REFLECTOR	ARM LENGTH	VOLTS	BALLAST	LAMP
SBLT3100IND120-6	01658	LARGE SHOEBOX 100 WATT	Type III	6"	120	ELECTRONIC	INDUCTION
SBLT3100IND120-10	01659	LARGE SHOEBOX 100 WATT	Type III	10"	120	ELECTRONIC	INDUCTION
SBLT3100IND120-14	01660	LARGE SHOEBOX 100 WATT	Type III	14"	120	ELECTRONIC	INDUCTION
SBLT3100IND277-6	01661	LARGE SHOEBOX 100 WATT	Type III	6"	277	ELECTRONIC	INDUCTION
SBLT3100IND277-10	01662	LARGE SHOEBOX 100 WATT	Type III	10"	277	ELECTRONIC	INDUCTION
SBLT3100IND277-14	01663	LARGE SHOEBOX 100 WATT	Type III	14"	277	ELECTRONIC	INDUCTION
SBLT3120IND120-6	01664	LARGE SHOEBOX 120 WATT	Type III	6"	120	ELECTRONIC	INDUCTION
SBLT3120IND120-10	01665	LARGE SHOEBOX 120 WATT	Type III	10"	120	ELECTRONIC	INDUCTION
SBLT3120IND120-14	01666	LARGE SHOEBOX 120 WATT	Type III	14"	120	ELECTRONIC	INDUCTION
SBLT3120IND277-6	01667	LARGE SHOEBOX 120 WATT	Type III	6"	277	ELECTRONIC	INDUCTION
SBLT3120IND277-10	01668	LARGE SHOEBOX 120 WATT	Type III	10"	277	ELECTRONIC	INDUCTION
SBLT3120IND277-14	01669	LARGE SHOEBOX 120 WATT	Type III	14"	277	ELECTRONIC	INDUCTION
SBLT3150IND120-6	01670	LARGE SHOEBOX 150 WATT	Type III	6"	120	ELECTRONIC	INDUCTION
SBLT3150IND120-10	01671	LARGE SHOEBOX 150 WATT	Type III	10"	120	ELECTRONIC	INDUCTION
SBLT3150IND120-14	01672	LARGE SHOEBOX 150 WATT	Type III	14"	120	ELECTRONIC	INDUCTION
SBLT3150IND277-6	01673	LARGE SHOEBOX 150 WATT	Type III	6"	277	ELECTRONIC	INDUCTION
SBLT3150IND277-10	01674	LARGE SHOEBOX 150 WATT	Type III	10"	277	ELECTRONIC	INDUCTION
SBLT3150IND277-14	01675	LARGE SHOEBOX 150 WATT	Type III	14"	277	ELECTRONIC	INDUCTION
SBLT3200IND120-6	01676	LARGE SHOEBOX 200 WATT	Type III	6"	120	ELECTRONIC	INDUCTION
SBLT3200IND120-10	01677	LARGE SHOEBOX 200 WATT	Type III	10"	120	ELECTRONIC	INDUCTION
SBLT3200IND120-14	01678	LARGE SHOEBOX 200 WATT	Type III	14"	120	ELECTRONIC	INDUCTION
SBLT3200IND277-6	01679	LARGE SHOEBOX 200 WATT	Type III	6"	277	ELECTRONIC	INDUCTION
SBLT3200IND277-10	01680	LARGE SHOEBOX 200 WATT	Type III	10"	277	ELECTRONIC	INDUCTION
SBLT3200IND277-14	01681	LARGE SHOEBOX 200 WATT	Type III	14"	277	ELECTRONIC	INDUCTION

MEDIUM SHOEBOX TYPE 5 REFLECTOR



APPLICATIONS:

Parking areas, access roadways and other general off street area lighting applications.

SPECIFICATIONS:

Medium Shoebox Type 5 Reflector is formed 2-piece aluminum housing & hinged front frame, continuous welded on all seams, textured bronze powdercoat finish. tempered flat glass lens and specular Type V reflector. Mount with extruded mounting arm in 6", 10", or 14" length. Listed for wet locations.

LAMP INCLUDED



DIMENSIONS:

	H	W	D
SBMT5	12"	20.5"	20.5"



ARRA COMPLIANT



CATALOG NO.	UPC CODE	DESCRIPTION	REFLECTOR	ARM LENGTH	VOLTS	BALLAST	LAMP
SBMT5100IND120-6	01682	MEDIUM SHOEBOX 100 WATT	Type V	6"	120	ELECTRONIC	INDUCTION
SBMT5100IND120-10	01683	MEDIUM SHOEBOX 100 WATT	Type V	10"	120	ELECTRONIC	INDUCTION
SBMT5100IND120-14	01684	MEDIUM SHOEBOX 100 WATT	Type V	14"	120	ELECTRONIC	INDUCTION
SBMT5100IND277-6	01685	MEDIUM SHOEBOX 100 WATT	Type V	6"	277	ELECTRONIC	INDUCTION
SBMT5100IND277-10	01686	MEDIUM SHOEBOX 100 WATT	Type V	10"	277	ELECTRONIC	INDUCTION
SBMT5100IND277-14	01687	MEDIUM SHOEBOX 100 WATT	Type V	14"	277	ELECTRONIC	INDUCTION
SBMT5120IND120-6	01688	MEDIUM SHOEBOX 120 WATT	Type V	6"	120	ELECTRONIC	INDUCTION
SBMT5120IND120-10	01689	MEDIUM SHOEBOX 120 WATT	Type V	10"	120	ELECTRONIC	INDUCTION
SBMT5120IND120-14	01690	MEDIUM SHOEBOX 120 WATT	Type V	14"	120	ELECTRONIC	INDUCTION
SBMT5120IND277-6	01691	MEDIUM SHOEBOX 120 WATT	Type V	6"	277	ELECTRONIC	INDUCTION
SBMT5120IND277-10	01692	MEDIUM SHOEBOX 120 WATT	Type V	10"	277	ELECTRONIC	INDUCTION
SBMT5120IND277-14	01693	MEDIUM SHOEBOX 120 WATT	Type V	14"	277	ELECTRONIC	INDUCTION
SBMT5150IND120-6	01694	MEDIUM SHOEBOX 150 WATT	Type V	6"	120	ELECTRONIC	INDUCTION
SBMT5150IND120-10	01695	MEDIUM SHOEBOX 150 WATT	Type V	10"	120	ELECTRONIC	INDUCTION
SBMT5150IND120-14	01696	MEDIUM SHOEBOX 150 WATT	Type V	14"	120	ELECTRONIC	INDUCTION
SBMT5150IND277-6	01697	MEDIUM SHOEBOX 150 WATT	Type V	6"	277	ELECTRONIC	INDUCTION
SBMT5150IND277-10	01698	MEDIUM SHOEBOX 150 WATT	Type V	10"	277	ELECTRONIC	INDUCTION
SBMT5150IND277-14	01699	MEDIUM SHOEBOX 150 WATT	Type V	14"	277	ELECTRONIC	INDUCTION
SBMT5200IND120-6	01700	MEDIUM SHOEBOX 200 WATT	Type V	6"	120	ELECTRONIC	INDUCTION
SBMT5200IND120-10	01701	MEDIUM SHOEBOX 200 WATT	Type V	10"	120	ELECTRONIC	INDUCTION
SBMT5200IND120-14	01702	MEDIUM SHOEBOX 200 WATT	Type V	14"	120	ELECTRONIC	INDUCTION
SBMT5200IND277-6	01703	MEDIUM SHOEBOX 200 WATT	Type V	6"	277	ELECTRONIC	INDUCTION
SBMT5200IND277-10	01704	MEDIUM SHOEBOX 200 WATT	Type V	10"	277	ELECTRONIC	INDUCTION
SBMT5200IND277-14	01705	MEDIUM SHOEBOX 200 WATT	Type V	14"	277	ELECTRONIC	INDUCTION

LARGE SHOEBOX TYPE 5 REFLECTOR



APPLICATIONS:

Parking areas, access roadways and other general off street area lighting applications.

SPECIFICATIONS:

Large Shoebox Type 5 Reflector is formed 2-piece aluminum housing & hinged front frame, continuous welded on all seams, textured bronze powdercoat finish. tempered flat glass lens and specular Type V reflector. Mount with extruded mounting arm in 6", 10", or 14" length. Listed for wet locations.

LAMP INCLUDED

DIMENSIONS:

	H	W	D
SBLT5	14.75"	23.5"	23.5"



**ARRA
COMPLIANT**



CATALOG NO.	UPC CODE	DESCRIPTION	REFLECTOR	ARM LENGTH	VOLTS	BALLAST	LAMP
SBLT5150IND120-6	01706	LARGE SHOEBOX 150 WATT	Type V	6"	120	ELECTRONIC	INDUCTION
SBLT5150IND120-10	01707	LARGE SHOEBOX 150 WATT	Type V	10"	120	ELECTRONIC	INDUCTION
SBLT5150IND120-14	01708	LARGE SHOEBOX 150 WATT	Type V	14"	120	ELECTRONIC	INDUCTION
SBLT5150IND277-6	01709	LARGE SHOEBOX 150 WATT	Type V	6"	277	ELECTRONIC	INDUCTION
SBLT5150IND277-10	01710	LARGE SHOEBOX 150 WATT	Type V	10"	277	ELECTRONIC	INDUCTION
SBLT5150IND277-14	01711	LARGE SHOEBOX 150 WATT	Type V	14"	277	ELECTRONIC	INDUCTION
SBLT5200IND120-6	01712	LARGE SHOEBOX 200 WATT	Type V	6"	120	ELECTRONIC	INDUCTION
SBLT5200IND120-10	01713	LARGE SHOEBOX 200 WATT	Type V	10"	120	ELECTRONIC	INDUCTION
SBLT5200IND120-14	01714	LARGE SHOEBOX 200 WATT	Type V	14"	120	ELECTRONIC	INDUCTION
SBLT5200IND277-6	01715	LARGE SHOEBOX 200 WATT	Type V	6"	277	ELECTRONIC	INDUCTION
SBLT5200IND277-10	01716	LARGE SHOEBOX 200 WATT	Type V	10"	277	ELECTRONIC	INDUCTION
SBLT5200IND277-14	01717	LARGE SHOEBOX 200 WATT	Type V	14"	277	ELECTRONIC	INDUCTION
SBLT5300IND120-6	01718	LARGE SHOEBOX 300 WATT	Type V	6"	120	ELECTRONIC	INDUCTION
SBLT5300IND120-10	01719	LARGE SHOEBOX 300 WATT	Type V	10"	120	ELECTRONIC	INDUCTION
SBLT5300IND120-14	01720	LARGE SHOEBOX 300 WATT	Type V	14"	120	ELECTRONIC	INDUCTION
SBLT5300IND277-6	01721	LARGE SHOEBOX 300 WATT	Type V	6"	277	ELECTRONIC	INDUCTION
SBLT5300IND277-10	01722	LARGE SHOEBOX 300 WATT	Type V	10"	277	ELECTRONIC	INDUCTION
SBLT5300IND277-14	01723	LARGE SHOEBOX 300 WATT	Type V	14"	277	ELECTRONIC	INDUCTION

ENTRY CYLINDERS



APPLICATIONS:

Loading docks, security lighting, entrance doorways

EL SERIES SPECIFICATIONS:

NSi offers the EL Series Entry Cylinder in sodium or fluorescent. Features impact and corrosion resistant polycarbonate housing and polycarbonate lens. The lens is engineered to diffuse the light to properly light entryways without glare. Lens locks in place with an allen set screw to resist tampering. 26W 4100K fluorescent lamp or 50W sodium are included. Listed for wet locations.

LAMP INCLUDED

DIMENSIONS:

	H	W	D
EL	9"	5"	7"

CATALOG NO.	UPC CODE	DESCRIPTION	VOLTS	BALLAST	LAMP	SHIPPING WEIGHT (LBS)
EL26FL*	05917	Entry Cylinder 26 Watt Fluorescent	120	ELECTRONIC	PLC	5
EL50S »	05918	Entry Cylinder 50 Watt Sodium	120	R-NPF	ED17	6

» Subject to prior sale

VANDAL RESISTANT 5x8 ENTRY LIGHT

APPLICATIONS:

Residential multi-family, commercial & institutional entry and small area fixtures

SPECIFICATIONS:

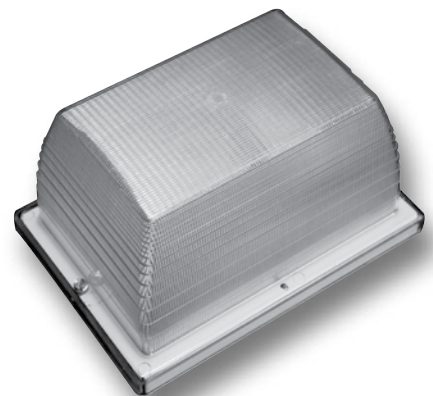
Our 5 x 8 Vandal Resistant Entry Light is available in incandescent or fluorescent with clear polycarbonate lens. Includes steel pan, gasket and hardware, socket and bracket. Incandescent model includes foil and fiber pad. Can be ceiling/canopy or wall mounted. Listed for wet locations.

VRM13FL: *LAMP INCLUDED*

VRM75I: *LAMP NOT INCLUDED*

DIMENSIONS:

	H	W	D
VRM	5.5"	7.75"	4.25"



CATALOG NO.	UPC CODE	DESCRIPTION	VOLTS	BALLAST	LAMP	SHIPPING WEIGHT (LBS)
VRM75I	05919	Mini VR 5x8 75 Watt Incandescent (Clear Lens)	120	n/a	A	2
VRM13FL*	05920	Mini VR 5x8 13 Watt Fluorescent (Clear Lens)	120	ELECTRONIC	PLC	2

**energy saving!*
FLUORESCENT!

SMALL VANDAL RESISTANT



APPLICATIONS:

Canopy, parking garages, loading docks

SPECIFICATIONS:

Our 8 x 8 Small Vandal Resistant Light has die cast housing, chromate conversion coating and textured bronze finish and corrosion resistant stainless steel hardware. Polycarbonate lens, silicone gasketing and medium socket with white reflector. 1/2" coin plugs are provided for surface wiring. Listed for wet locations.

LAMP INCLUDED

DIMENSIONS:

	H	W	D
VRS70	8.5"	8.5"	7.25"



CATALOG NO.	UPC CODE	DESCRIPTION	VOLTS	BALLAST	LAMP	BASE	SHIPPING WEIGHT (LBS)
VRS70MHQ	05911	Small Vandal Resistant 8x8 Square 70 Watt Metal Halide	120/208/240/277	QUAD HX-HPF	ED17	medium	10
VRS70S	05912	Small Vandal Resistant 8x8 Square 70 Watt Sodium	120	R-NPF	ED17	medium	8

LARGE VANDAL RESISTANT



APPLICATIONS:

Canopy, parking garages, loading docks

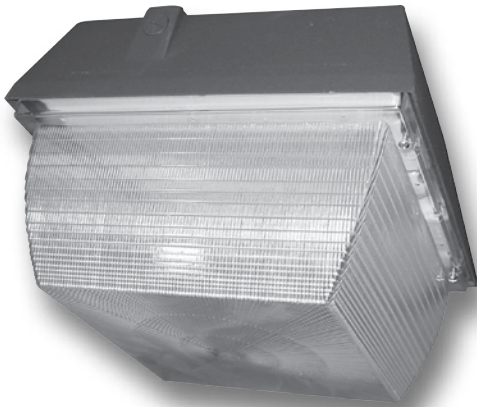
SPECIFICATIONS:

Our 12 x 12 Large Vandal Resistant Light has die cast housing, chromate conversion coating and textured bronze finish and corrosion resistant stainless steel hardware. Polycarbonate lens, silicone gasketing and medium socket with white reflector. 1/2" coin plugs are provided for surface wiring. Listed for wet locations.

LAMP INCLUDED

DIMENSIONS:

	H	W	D
VRS	12.3"	12.3"	8.6"



CATALOG NO.	UPC CODE	DESCRIPTION	VOLTS	BALLAST	LAMP	BASE	SHIPPING WEIGHT (LBS)
VRS150MHQP*	06398	Large Vandal Resistant 12x12 Square 150 Watt Metal Halide Pulse Start	120/208/240/277	QUAD HX-HPF	ED17	medium	17
VRS100MHQ	05914	Large Vandal Resistant 12x12 Square 100 Watt Metal Halide	120/208/240/277	QUAD HX-HPF	ED17	medium	14
VRS150S »	05915	Large Vandal Resistant 12x12 Square 150 Watt Sodium	120	R-NPF	ED17	medium	12

» Subject to prior sale

SUPER DUTY WORKLIGHT



APPLICATIONS:

Construction, indoor/outdoor portable lighting applications.

SPECIFICATIONS:

NSI's 250 Watt Metal Halide lamp provides brilliant worklight performance with a 150 Watt Quartz restrike (quartz is on while metal halide starts and shuts off automatically). Die cast aluminum housing and hinge door frame worklight has a black polyester powder coat finish. Heavy duty sled-style base for stability and sturdy rubber handle provides a firm grip. Tempered glass lens with glare control and heavy duty grill guard with black powder coating. Large adjustable knob makes up and down adjustment easy. Super Duty Worklight has a 12 foot 14 AGW/3C power cord.

LAMPS INCLUDED

DIMENSIONS:

	H	W	D
WLMH250SD	22"	13.375"	12"

CATALOG NO.	UPC CODE	DESCRIPTION	VOLTS	BALLAST	LAMP	BASE	SHIPPING WEIGHT (LBS)
WLMH250SD	05957	Super Duty Worklight 250 Watt Metal Halide	120	CWA	ED28	mogul	30

HEAVY DUTY FLUORESCENT WORKLIGHT



APPLICATIONS:

Indoor/outdoor portable lighting applications, ideal for construction sites, machinery/car repair and electrical work

SPECIFICATIONS:

Heavy Duty Fluorescent has a die cast aluminum housing and frame. Its electronic ballast provides instant light with less amperage draw. 6500 Kelvin 65 Watt Compact Fluorescent Lamp provides safe, cool light. Red polyester powder coat finish worklight has a comfort grip handle, tempered glass lens and grill guard with black powder coating. On/Off switch and 8 foot 14 AWG/3C power cord.

LAMP INCLUDED

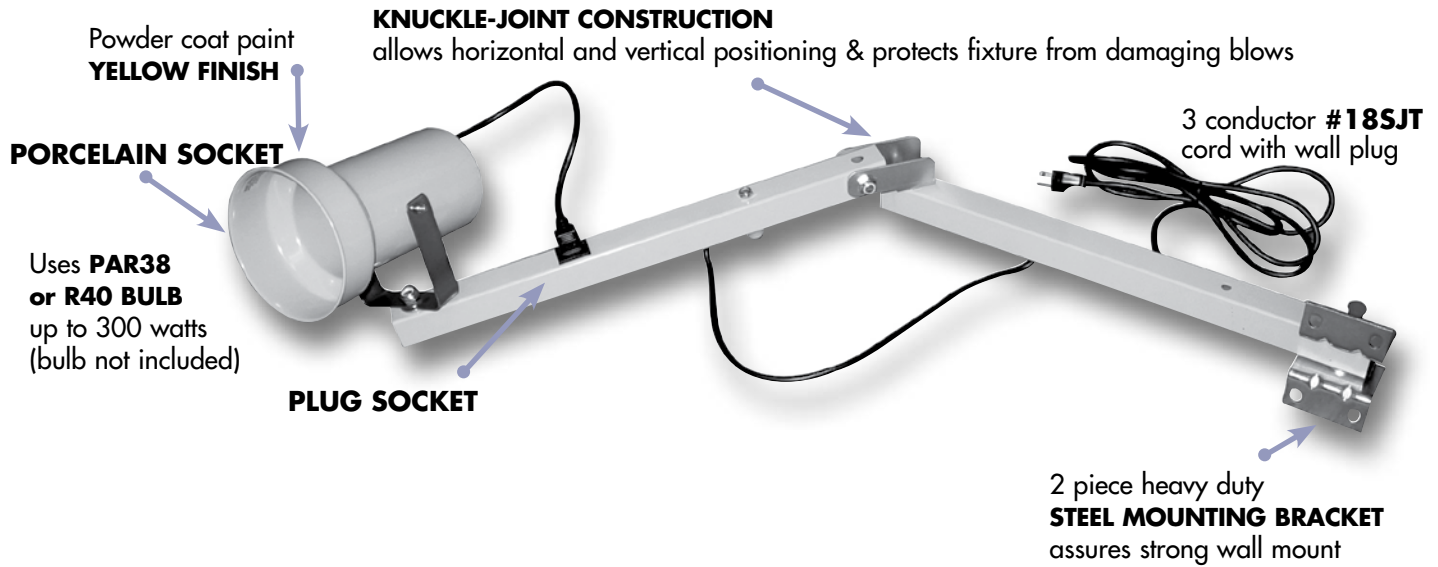
DIMENSIONS:

	H	W
WLFL65HH	18.75"	15.5"

energy saving
FLUORESCENT!

CATALOG NO.	UPC CODE	DESCRIPTION	VOLTS	SHIPPING WEIGHT (LBS)
WLFL65HH	05954	Heavy Duty 65 Watt CFL portable worklight	120	30
LPLM65	05780	65 Watt CFL Replacement Lamp	120	1

INCANDESCENT LOADING DOCK LIGHTS



SPECIFICATIONS:

NSi's incandescent loading dock lights have adjustable pivot friction which maintains intended positions. 1 1/2" square, 14 gauge steel arm resists damage from impact. 36", 3 conductor #18SJT cord with wall plug is included.

LAMP NOT INCLUDED

CATALOG NO	UPC CODE	DESCRIPTION	COLOR
TA-DOK 40VA	96056	115VAC, EXTENDS 40 INCHES	YELLOW
TA-DOK 60VA	96057	115VAC, EXTENDS 60 INCHES	YELLOW

ACCESSORIES

CATALOG NO	UPC CODE	DESCRIPTION
TA-WG	96060	WIRE LAMP GUARD
TA-LDS	96550	UNIVERSAL SOCKET
TA-DOKRL	96551	REPLACEMENT HEAD

SHORT-TERM LIGHTING SYSTEMS



APPLICATIONS:
Construction

SPECIFICATIONS:
All short-term lighting systems is 100 feet in length with molded sockets in 10-foot intervals. The sockets are rated 200 watts and the cages are high-visibility yellow. Complies with OSHA and NEC.

CATALOG NO.	UPC CODE	DESCRIPTION	SHIPPING WEIGHT (LBS.)	CARTON QTY.
SLUL100	69104	Standard UL Listed system with rotatable sockets and black light duty cord	13	1

SHORT-TERM LIGHTING SYSTEMS ACCESSORIES



CATALOG NO.	UPC CODE	DESCRIPTION	SHIPPING WEIGHT (LBS.)	CARTON QTY.
SC200	69111	standard cage	0.15	24



CATALOG NO.	UPC CODE	DESCRIPTION	SHIPPING WEIGHT (LBS.)	CARTON QTY.
RS200	69112	rotatable socket 200 Watt	0.1	24

BOX VAPORTITE



APPLICATIONS:

Well & pit lighting, indicators - dock, industrial, commercial

SPECIFICATIONS:

Heavy duty die cast aluminum housing
One piece locking die cast aluminum guard with grey polyester powder coat finish. Screw in tempered glass globe and UL/CUL listed for wet location use. 1/2" NPT knockouts.

LAMP NOT INCLUDED

DIMENSIONS:

	<i>H</i>	<i>W</i>
VTB	9"	4.125"



CATALOG NO.	UPC CODE	DESCRIPTION	LAMP	SHIPPING WEIGHT (LBS)
VTB15012	05987	Box 150 Watt 1/2" Vaportite	Incandescent	3

PENDANT VAPORTITE



APPLICATIONS:

Well & pit lighting, indicators - dock, industrial, commercial

SPECIFICATIONS:

Heavy duty die cast aluminum housing. One piece locking die cast aluminum guard with grey polyester powder coat finish. Screw in tempered glass globe and 3 foot wire lead (NSi Exclusive). UL/CUL listed for wet location use. 1/2" NPT knockouts.

LAMP NOT INCLUDED

DIMENSIONS:

	<i>H</i>	<i>W</i>
VTP	12.13"	5.75"



CATALOG NO.	UPC CODE	DESCRIPTION	LAMP	SHIPPING WEIGHT (LBS)
VTP15012	05988	Pendant 150 Watt 1/2" Vaportite	Incandescent	2.5

WALL VAPORTITE



APPLICATIONS:

Well & pit lighting, indicators - dock, industrial, commercial

SPECIFICATIONS:

Heavy duty die cast aluminum housing
One piece locking die cast aluminum guard with grey polyester powder coat finish. Screw in tempered glass globe. UL/CUL listed for wet location use. 1/2" NPT knockouts.

LAMP NOT INCLUDED

DIMENSIONS:

	<i>H</i>	<i>W</i>
VTW15012	10"	7.13"

CATALOG NO.	UPC CODE	DESCRIPTION	LAMP	SHIPPING WEIGHT (LBS)
VTW15012	05989	Wall 150 Watt 1/2 Vaportite	Incandescent	3.5

VAPORTITE ACCESSORIES

1



2



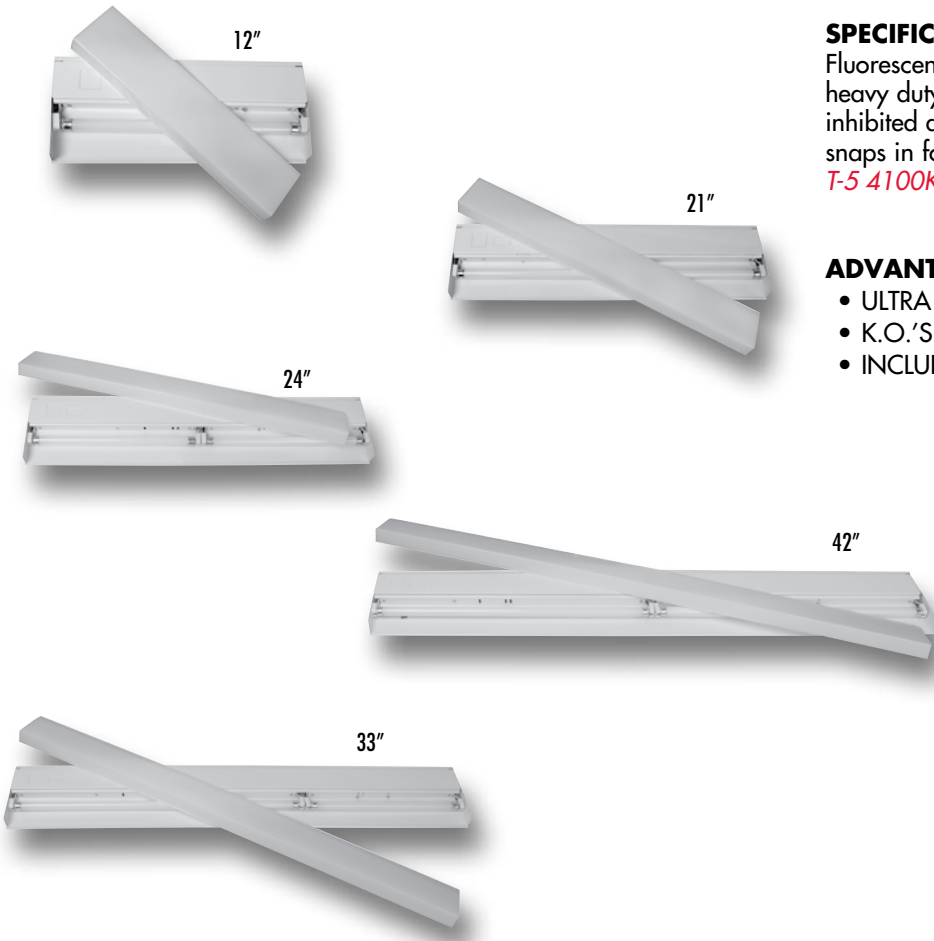
3



CATALOG NO.	UPC CODE	FIG. NO.	DESCRIPTION	SHIPPING WEIGHT (LBS)
CG150	05409	1	Clear Glass Globe for 150 Series Vaportite Fixtures	1
CG310 »	05410	2	Clear Glass Globe for 310 Series Vaportite Fixtures	1.6
FG310 »	05412	3	Frosted Glass Globe for 310 Series Vaportite Fixtures	1.6

» Subject to prior sale

FLUORESCENT UNDERCABINET LIGHTING



SPECIFICATIONS:

Fluorescent Undercabinet lighting is constructed of heavy duty steel with white powdercoat finish. UV inhibited acrylic diffuser with linear prism which snaps in for easy maintenance.

T-5 4100K LAMP INCLUDED

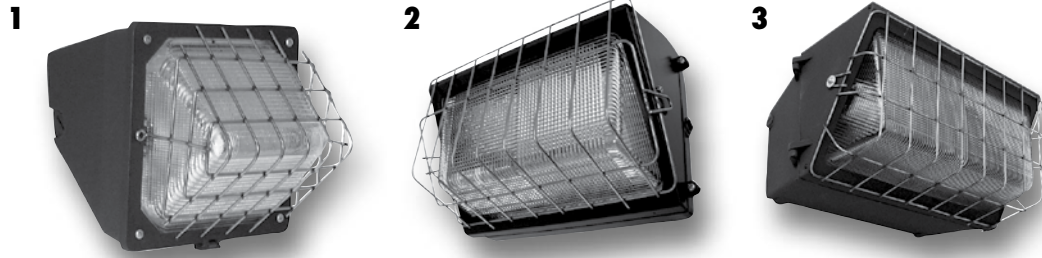
ADVANTAGES:

- ULTRA THIN (ONLY ONE (1) INCH THICK!)
- K.O.'S ON TOP, SIDE AND BACK
- INCLUDES ROCKER SWITCH

energy saving
FLUORESCENT!

CATALOG NO.	UPC CODE	DESCRIPTION	VOLTS	WIDTH	DEPTH	SHIPPING WEIGHT (LBS)
3" UNDERCABINET						
UCF128WT5-3	05960	Undercabinet 12" 8 Watt T-5 Electronic Ballast With Lamp - 3" width	110-125	3"	1"	6
UCF2113WT5-3	05961	Undercabinet 21" 13 Watt T-5 Electronic Ballast With Lamp - 3" width	110-125	3"	1"	9
UCF2416WT5-3	05962	Undercabinet 24" 16 Watt T-5 Electronic Ballast With Lamp - 3" width	110-125	3"	1"	11
UCF3321WT5-3	05963	Undercabinet 33" 21 Watt T-5 Electronic Ballast With Lamp - 3" width	110-125	3"	1"	14
UCF4226WT5-3	05964	Undercabinet 42" 26 Watt T-5 Electronic Ballast With Lamp - 3" width	110-125	3"	1"	18
5" UNDERCABINET						
UCF128WT5	05362	Undercabinet 12" 8 Watt T-5 Electronic Ballast With Lamp	110-125	5"	1"	6
UCF2113WT5	05363	Undercabinet 21" 13 Watt T-5 Electronic Ballast With Lamp	110-125	5"	1"	9
UCF2416WT5	05364	Undercabinet 24" 16 Watt T-5 Electronic Ballast With Lamp	110-125	5"	1"	11
UCF3321WT5	05365	Undercabinet 33" 21 Watt T-5 Electronic Ballast With Lamp	110-125	5"	1"	14
UCF4226WT5	05366	Undercabinet 42" 26 Watt T-5 Electronic Ballast With Lamp	110-125	5"	1"	18

WIRE GUARDS**



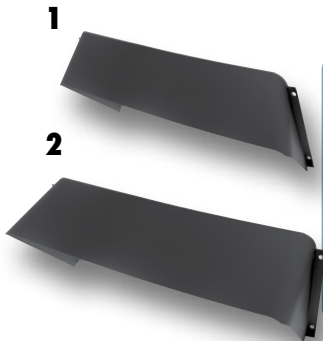
NSi Wire Guards are stainless steel construction. For compact, medium and large wallpacks and 400 and 1000 watt flood lights.

CATALOG NO.	UPC CODE	FIG. NO.	DESCRIPTION	H	W	D	SHIPPING WEIGHT (LBS.)
WGW200	05491	1	Wire Guard For Compact wallpack with glass lens	5	7.3	4	2
WGW300	05492	2	Wire Guard For Medium Watt wallpack	8.9	13	3.2	2
WGW400	05493	3	Wire Guard For Large wallpack	8.3	17	3.6	2
WGF550	05494	not shown	Wire Guard For 400 Watt flood	15.6	14.5	1.2	2
WGF650	05495	not shown	Wire Guard 1000 Watt flood	22.25	22.25	.4	2

**Additional Wire Guards available by special quote.

GLARE SHIELDS**

Glare Shields are made of 1½ mm aluminum with black powdercoat finish; can be reverse mounted to use as a back cutoff.



CATALOG NO.	UPC CODE	FIG. NO.	DESCRIPTION	H	W	D	SHIPPING WEIGHT (LBS.)
GSF150	05498	1	Glare Shield For Medium Flood	7.7	7.75	5	1
GSLPF350400	05499	2	Glare Shield For Low Profile Floods	8	15	5	2

**Additional Glare Shields and Cutoff Shields available by special quote.

HEAVY DUTY GROUND STAKE



Heavy Duty Ground Stake has position adjustable stabilizer and built in wiring compartment. Durable molded plastic with die cast fitting for ½" NPT threads, two ½" coin plugs for enclosed wiring and two ½" coin plugs outside for surface and through-wiring.

CATALOG NO.	UPC CODE	DESCRIPTION	H	W	D	SHIPPING WEIGHT (LBS.)
GST	05513	Non-metallic Heavy Duty Ground Stake	19	9	3.5	4

Alphanumeric Index

PART	PAGE#	PART	PAGE#	PART	PAGE#
AEE	26	GLD	32	WP	2
ARE	26	GSF, GSL	48	WPC	3
BK	15,16	GST	48	WPCA	6
CG	46	HBAC	33	WPCRKY	8
CH	33	LPM	42	WPCSC	3
DTD	17-19	MSPAR	20	WPGC	2
DTDNE	18-19	MSQ	20	WPL	4,5
EEL	21	MSSP	20	WPLD	5,30
EL	40	PHNM	13	WPLFC	5
ELX	23	QBS, QBD	13	WPLRKY	9
EMFW	22	QF	14	WPLSC	1
EMHD	24	RELX	23	WPLX	29
EMR	26	SBL	35-39	WPM	4
EMT	22,23	SBM	35-39	WPMFC	1
EXL	21	SLUL	44	WPMRKY	8
EXW	24	TA	43	WPMSC	1
FBP	25	UCF	47	WPMX	29
FG	46	VRM	40		
FL	12,34	VRS	32,41		
FLC	10	VTB	45		
FLF	10	VTP	45		
FLH	12	VTW	46		
FLLP	11	WGF	48		
FLM	11	WGW	48		
FLPTM	11	WLF	42		
GL	30	WLMH	42		



NSi Industries, LLC Lighting Products Division



ADDRESS:
9730 Northcross Center Ct.
Huntersville, NC 28078
USA



PHONE:
800.321.5847



FAX:
800.841.5566



EMAIL:
nsi@nsiindustries.com



WEB:
www.nsiindustries.com



TERMS & CONDITIONS OF SALE (Non-Stocking Distributor)

NSi Lighting Products Vendor Number: 662381

1. Payment Terms:

2% 10 Prox., Net 25th.

2. Product Warranties:

NSi Lighting Products are warranted to be free of defects in material and workmanship for a period of one (1) year. HID fixtures carry a five (5) year housing warranty and ballasts are covered under the manufacturer's two (2) year warranty. Lamps carry a one year warranty. Emergency & Exit Lighting are warranted for five (5) years with three (3) year warranty on batteries. Induction fixtures carry a five year warranty on housing, lamp and driver.

3. **Listings:** All fixtures will be listed by a nationally recognized testing laboratory. UL, CUL, CSA, ETL, NRTL, etc. We reserve the right to assign compliance listings to any of the laboratories indicated above and recognized by the NEC.

4. **Product Changes:** We reserve the right to change pricing, specifications or construction of products without prior notice and without incurring obligation. Product specifications may differ from the catalog since product improvements are continuous. Consult factory for verification. The compliance of our products to individual project specifications and approval for their use, is not warranted by NSi Lighting Products. Specification sheets and photometric data are provided as a guideline for applications information. Final consideration of any given application must take into consideration knowledge of the specific installation environment.

5. **Product Defectives:** We strive to produce the highest quality products on the market today. However, in the event that you have received a product, which is truly defective and not the result of shipping damage, simply call your customer service representa-

tive and we will repair, replace, or provide parts to make it right.

6. **Product Returns:** No material will be accepted without prior written authorization. Credit will be allowed for actual quantities received and verified at our dock. Only product shipped to and returned from distributors' stock will be accepted for credit. Credit will be calculated at the original invoice price or the current price, whichever is lower. Except in the case of an NSi Lighting Products error, material must be returned freight prepaid. Original outbound freight will also be deducted from the credit. A restocking charge of 35% will apply to most returns. Product must be returned in the original, unopened and undamaged cartons and packed appropriately to protect the integrity of the product as well as the carton. The product must not be more than one (1) year old. Please call or fax for NSi Lighting Products

to issue an RGA number, without which no products will be accepted.

7. **Freight:** All orders over \$2,000 will be shipped freight prepaid via the carrier of our choosing.

8. **Special Orders and Custom Product:** All special orders or custom products are excluded from NSi Lighting Products' RGA policy; these products will not be allowed to be returned. Payment terms for custom products will be determined on a case-by-case basis.

9. **Programs and Promotions:** Stocking Distributor Programs or special promotions may qualify you for special terms and conditions; contact your NSi Lighting Products representative for details.



YOUR REPRESENTATIVE:



TORK® POLARIS™ EASY-TWIST™ LIGHTING TORK®ALERT™

NSi Industries LLC • USA • 800.321.5847 • Fax: 800.841.5566 • www.nsiindustries.com