



TRAC-MASTER®

Low Voltage

SLANT SERIES

T805, T807 and T809

Project: _____

Fixture Type: _____

Location: _____

Contact/Phone: _____

PRODUCT DESCRIPTION

The angular design cleverly disguises the integral electronic transformer. The slant transformer allows 90° vertical aiming capability in both directions and 358° horizontal rotation. MR16 lamps provide tight beam control for dramatic lighting applications.

Socket Ceramic bi-pin.

Aiming 90° vertical aiming capability in both directions and 358° horizontal rotation.

Transformer 50VA 12V solid state electronic transformer, integral to fixture • Slant design • Dimmable.

Juno Universal Trac Adapter Universally compatible with both Trac-Master 1-circuit or 2-circuit trac, Trac-Lites trac, monopoints and special mountings • Also UL Recognized for use on ConTech® LT Series track • Copper alloy contacts provide precise spring action – no arcing and will not take a set • True, positive electrical ground • On /off switch included • Patented embossed polarity arrows on bottom of adapter • Spring-loaded positive latch with embossed polarity arrows secures trac light to trac • Two-position power contact provided for two-circuit application.

Alternate GTYPE Trac Adapter Compatible with track systems based on GES type track, including Lithonia LT Commercial Track (not LTS type) • System specific and assembled to trac fixture • Consult factory for additional information.

Alternate HTYPE Trac Adapter Compatible with track systems which use a H-type track adapter, including Lithonia LTS Decorative Track (not LT type) • System specific and assembled to trac fixture • Two-position power contact provided for two-circuit application • Consult factory for additional information.

Alternate LTYPE Trac Adapter Compatible with track systems which use a L-type track adapter • System specific and assembled to trac fixture • Two-position power contact provided for two-circuit application • Consult factory for additional information.

Labels UL listed, CSA certified • Union made • Assembled in U.S.A.

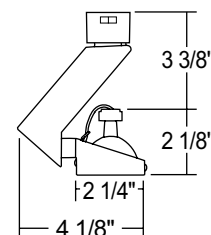
Specifications subject to change without notice.



Low Voltage MR16

Construction Polycarbonate transformer housing with die-formed metal lamp housing.

Catalog Number	Description	Finish	Lamp
T805 WH	Gimbal Ring w/Universal Trac Adapter	White	20-50W MR16
T805 BL	Gimbal Ring w/Universal Trac Adapter	Black	20-50W MR16
T805 GTYPE WH	Gimbal Ring w/G-Type Trac Adapter	White	20-50W MR16
T805 GTYPE BL	Gimbal Ring w/G-Type Trac Adapter	Black	20-50W MR16
T805 HTYPE WH	Gimbal Ring w/H-Type Trac Adapter	White	20-50W MR16
T805 HTYPE BL	Gimbal Ring w/H-Type Trac Adapter	Black	20-50W MR16
T805 LTYPE WH	Gimbal Ring w/L-Type Trac Adapter	White	20-50W MR16
T805 LTYPE BL	Gimbal Ring w/L-Type Trac Adapter	Black	20-50W MR16



ACCESSORIES

Cat. No.	Description	Cat. No.	Description
CGF 175	Color Glass Filter	DIFF 175	Diffuse Glass Lens
DCCF 175	Dichroic Color Corection Filter	LSPREAD 175	Linear Spread Glass Lens
DGF 175	Dichroic Glass Filter	SOLITE 175	Uniformity Lens (Solite)
UVF 175	UV Filter	HCLBL 175	Hexagonal Cell Louver - Black
PRISM 175	Prismatic Spread Glass Lens		

See specification sheet [D1.2.2](#) for details.

ConTech is a registered trademark of ConTech Lighting.



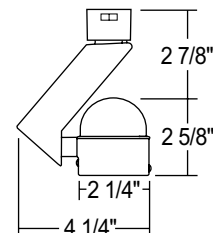
1300 S. Wolf Road • Des Plaines, IL 60018 • Phone (847) 827-9880 • Fax (847) 827-2925 • Visit us at www.acuitybrands.com/juno-trac
 Printed in U.S.A. ©2017-2018 Acuity Brands Lighting, Inc. Rev. 09/19/18

TRAC-MASTER®

Low Voltage

SLANT SERIES**T805, T807 and T809****Low Voltage MR16****Construction** Polycarbonate transformer housing with die-formed metal lamp housing and metal mesh back.

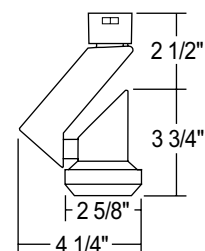
Catalog Number	Description	Finish	Lamp
T807 WH	Round Back Mesh w/Universal Trac Adapter	White	20-50W MR16
T807 BL	Round Back Mesh w/Universal Trac Adapter	Black	20-50W MR16
T807 GTYPE WH	Round Back Mesh w/G-Type Trac Adapter	White	20-50W MR16
T807 GTYPE BL	Round Back Mesh w/G-Type Trac Adapter	Black	20-50W MR16
T807 HTYPE WH	Round Back Mesh w/H-Type Trac Adapter	White	20-50W MR16
T807 HTYPE BL	Round Back Mesh w/H-Type Trac Adapter	Black	20-50W MR16
T807 LTYPE WH	Round Back Mesh w/L-Type Trac Adapter	White	20-50W MR16
T807 LTYPE BL	Round Back Mesh w/L-Type Trac Adapter	Black	20-50W MR16

**ACCESSORIES**

Cat. No.	Description	Cat. No.	Description
CGF 175	Color Glass Filter	DIFF 175	Diffuse Glass Lens
DCCF 175	Dichroic Color Corecction Filter	LSPREAD 175	Linear Spread Glass Lens
DGF 175	Dichroic Glass Filter	SOLITE 175	Uniformity Lens (Solite)
UVF 175	UV Filter	HCLBL 175	Hexagonal Cell Louver - Black
PRISM 175	Prismatic Spread Glass Lens		

See specification sheet [D1.2.2](#) for details.**Low Voltage MR16****Construction** Polycarbonate transformer housing with vented die-cast aluminum lamp housing.

Catalog Number	Description	Finish	Lamp
T809 WH	Step Cylinder w/Universal Trac Adapter	White	20-50W MR16
T809 BL	Step Cylinder w/Universal Trac Adapter	Black	20-50W MR16
T809 GTYPE WH	Step Cylinder w/G-Type Trac Adapter	White	20-50W MR16
T809 GTYPE BL	Step Cylinder w/G-Type Trac Adapter	Black	20-50W MR16
T809 HTYPE WH	Step Cylinder w/H-Type Trac Adapter	White	20-50W MR16
T809 HTYPE BL	Step Cylinder w/H-Type Trac Adapter	Black	20-50W MR16
T809 LTYPE WH	Step Cylinder w/L-Type Trac Adapter	White	20-50W MR16
T809 LTYPE BL	Step Cylinder w/L-Type Trac Adapter	Black	20-50W MR16

**ACCESSORIES**

Cat. No.	Description	Cat. No.	Description
CGF 175	Color Glass Filter	LSPREAD 175	Linear Spread Glass Lens
DCCF 175	Dichroic Color Corecction Filter	SOLITE 175	Uniformity Lens (Solite)
DGF 175	Dichroic Glass Filter	HCLBL 175	Hexagonal Cell Louver - Black
UVF 175	UV Filter	EYEBROWBL 175	Eyebrow Accessory - Black
PRISM 175	Prismatic Spread Glass Lens	SNOOTBL 175	Snoot Accessory - Black
DIFF 175	Diffuse Glass Lens		

See specification sheet [D1.2.2](#) for details.