

QuickPort® DIN Rail-Mount Box

APPLICATION

The compact DIN rail-mount box provides an ideal network patching solution for industrial automation and control panels. The box accepts a Leviton QuickPort Decora Insert, available with 1, 2, 3, 4, or 6 ports. The box allows for orientation of the 1-3/8 inch cable access port at the top or bottom, thereby increasing flexibility of cabling within a tight control enclosure. The box depth is suitable for Cat 5e or Cat 6 applications.



SPECIFICATION

The DIN rail-mount box shall be field configurable to accept Decora inserts, which can house up to six QuickPort connectors. It shall include a 1-3/8 inch diameter cable access port at one end to accept 1 inch trade conduit bushings and fittings. The rear cover shall be removable and symmetrical such that the front housing can be mounted with cable access port at the top or bottom. Box shall mount to standard and low-profile 35 mm symmetrical DIN rails and 32 mm asymmetrical standard DIN rails and include a disconnect tab. Materials shall be high-impact fire-retardant plastic rated UL 94V-0, and cULus listed under UL 1863 and CAN/CSA-C22.2 No. 182.4.

FEATURES

- Accepts QuickPort Decora Insert (1-, 2-, 3-, 4-, and 6-port versions available: 4164x-00x)
- 1-3/8 inch nominal cable access port accepts 1-inch trade conduit fittings — supplied with 1-inch bushing
- Compatible with standard and low-profile 35 mm symmetrical DIN rails and 32 mm asymmetrical DIN rails
- DIN rail adapter disconnect tab enables easy and quick installation and removal

DESIGN CONSIDERATIONS

- Compatible with Cat 5e and Cat 6 connectivity (within cable bend radius capability)
- Large cable access port (1-3/8 inch diameter) improves access and bend radius considerations
- Symmetrical design allows cable access port to be positioned at top or bottom
- Accepts QuickPort Decora inserts

STANDARDS COMPLIANCE

cULus Listed: UL 1863, CAN/CSA-C22.2 No. 182.4

PHYSICAL SPECIFICATIONS

Dimensions: See page two
Capacity: Up to 6 QuickPort connectors using Decora insert
Cable Access: 1-3/8 inch diameter suitable for 1-inch trade conduit fittings
DIN Rail Sizes: 35 mm symmetrical standard and low profile
32 mm asymmetrical standard
Operating Temp: -10°C to 60°C
Color: Black
Materials: UL 94V-0 high-impact plastic

COUNTRY OF ORIGIN

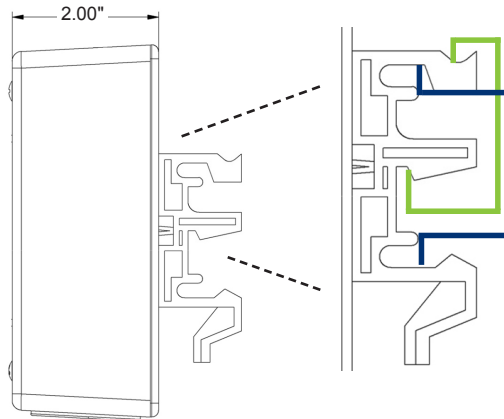
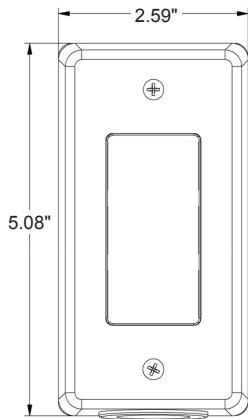
Mexico

WARRANTY INFORMATION

For a copy of Leviton product warranties, visit www.leviton.com/warranty.

ELECTRONIC FILES

For CAD files, typical specs, or technical drawings (.DXF, .DWG), visit www.leviton.com.



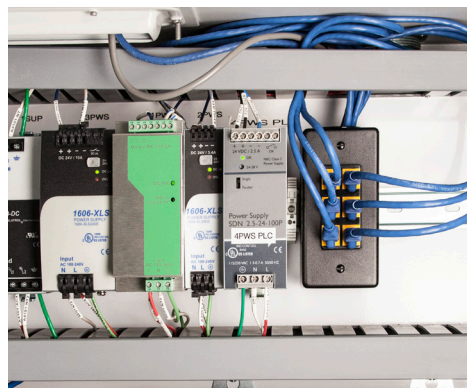
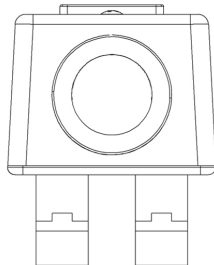
DIN 32 Rail Standard



DIN 35 Rail Standard



DIN 35 Rail Low Profile



41089-0DN

PART NUMBERS

Description

Part No.

DIN Rail-Mount Box, Black

41089-0DN

Available in black only.



Leviton Network Solutions
2222 - 222nd St. SE
Bothell, WA 98021-4416

Asia / Pacific
T +1.631.812.6228
E infoasean@leviton.com

Canada
T +1.514.954.1840
E pcservice@leviton.com

Caribbean
T +1.954.593.1896
E infocaribbean@leviton.com

China
T +852.2774.9876
E infochina@leviton.com

Colombia
T +57.1.743.6045
E infocolombia@leviton.com

tel 1-800-824-3005
tel +1-425-486-2222
appeng@leviton.com
www.leviton.com

Europe
T +33.6.8869.1380
E infoeurope@leviton.com

Mexico
T +52.55.5082.1040
E lsamarketing@leviton.com

Middle East & Africa
T +971.4.886.4722
E lmeinfo@leviton.com

South Korea
T +82.2.3273.9963
E infokorea@leviton.com