

TYPE SCNM

Features

- Manufactured from high strength aluminum alloy
- Configuration - 18 to 42 string inputs; 4 outputs
- Conductor Input: 4-14
- Conductor Output: 1000kcmil-6
- Designed for insulators up to 2000V

Benefits

- Provides maximum conductivity and strength for copper and aluminum conductors
- Application versatility
- Input accepts Class B and C conductors
- Output accepts Class B, C, G, H, I, K, M and DLO conductors
- Mounting hardware fits variety of commercial insulators

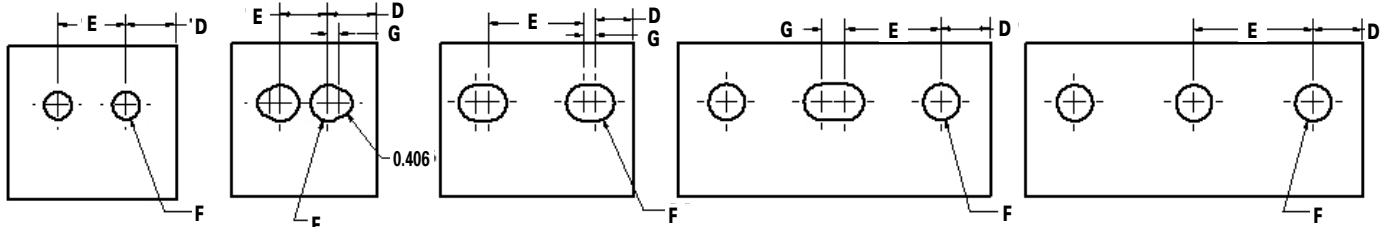


Fig. 1

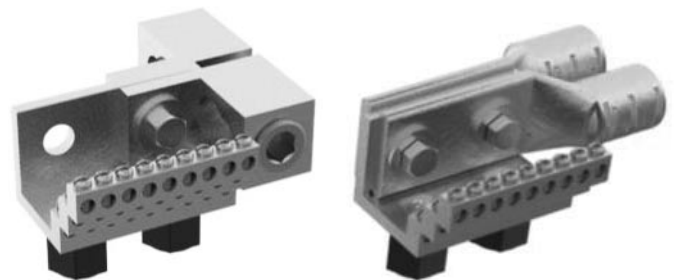
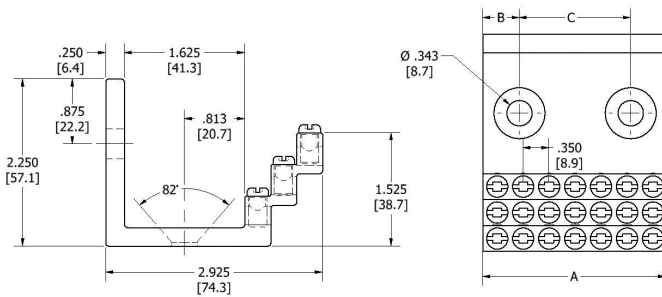
Fig. 2

Fig. 3

Fig. 4

Fig. 5

Lug Mount Configurations (See Figure Number above)



Typical Mechanical
Lug Mount

Typical Compression
Lug Mount

Catalog Number	Lug Mount Figure Number	PV Source Input**	String Input		Output		Dimensions - in. (mm)						
			No. of Strings	Wire Range	No. of Circuits	Wire Range	A	B	C	D	E	F	G
SCNM-18	2	540	18	4-14	1-4	1000kcmil-6	2.136 (54.25)	0.443 (11.25)	1.250 (31.75)	0.718 (18.24)	0.700 (17.78)	0.531 (13.49)	0.150 (3.81)
SCNM-21	1	630	21	4-14	1-4	1000kcmil-6	2.468 (62.69)	0.493 (12.52)	1.500 (38.10)	0.734 (18.64)	1.000 (25.40)	0.406 (10.31)	
SCNM-24	3	720	24	4-14	1-4*	1000kcmil-6	2.836 (72.03)	0.543 (13.79)	1.750 (44.45)	0.543 (13.79)	1.400 (35.56)	0.531 (13.49)	0.175 (4.45)
SCNM-27	1	810	27	4-14	1-4*	1000kcmil-6	3.186 (80.92)	0.593 (15.06)	2.000 (50.80)	0.718 (18.24)	1.750 (44.45)	0.531 (13.49)	
SCNM-30	3	900	30	4-14	1-4*	1000kcmil-6	3.536 (89.81)	0.518 (13.16)	2.500 (63.50)	0.718 (18.24)	1.750 (44.45)	0.531 (13.49)	0.175 (4.45)
SCNM-33	3	990	33	4-14	1-4*	1000kcmil-6	3.886 (98.70)	0.443 (11.25)	3.000 (76.20)	0.718 (18.24)	1.750 (44.45)	0.531 (13.49)	0.350 (8.89)
SCNM-36	3	1080	36	4-14	1-4*	1000kcmil-6	4.236 (107.59)	0.618 (15.70)	3.000 (76.20)	0.718 (18.24)	1.750 (44.45)	0.531 (13.49)	0.525 (13.34)
SCNM-39	4	1170	39	4-14	1-4*	1000kcmil-6	4.586 (116.48)	0.793 (20.14)	3.000 (76.20)	0.718 (18.24)	1.400 (35.56)	0.531 (13.49)	0.350 (8.89)
SCNM-42	5	1260	42	4-14	1-4*	1000kcmil-6	4.936 (125.37)	0.968 (24.59)	3.000 (76.20)	0.718 (18.24)	1.750 (44.45)	0.531 (13.49)	

All wire sizes, unless noted otherwise, are American Wire Gauge (AWG)

**For non-fused PV string inputs, 30A per string

Each input hole contains a 1/4 - 28 UNF; slotted/square drive screw

Two 5/16-18 UNC x 1/2 screws are included for mounting to insulators (insulators sold separately, consult Customer Care for information)

*For use with mechanical or compression components; sold separately. NEMA mounting hole configurations

UL/cUL Recognized to UL486A/B, UL File E6207