

Switched Enclosure Auxillary Contact

Auxillary Contact

Auxillary Contact

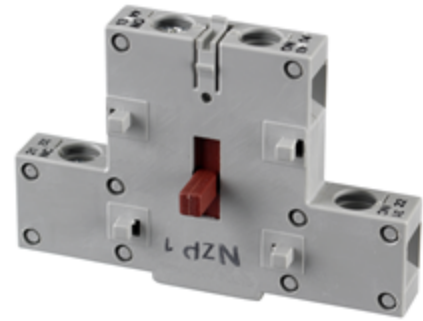
HUBBELL

Ordering Information

Description	UPC	Catalog Number
Auxiliary contact, 1 NO & 1 NC, A600 pilot duty, break after break (10A, 600V)	783585955117	HBLAC1

Contact Type

Break after Break



Standards

Listed to UL Standard
Certified to CSA Standard

Performance

Electrical

Current Interrupting	Certified for current interrupting at full rated current voltage
Dielectric Voltage	Withstands 3,000V Min
Max. Working Voltage	600V RMS
Operations	Mechanical 10,000 cycles; Electrical 6,000 cycles

Online Resources

eCatalog
Installation Instructions

Dimensions in Inches (mm)

Hubbell Wiring Device-Kellems • Hubbell Incorporated (Delaware) • 40 Waterview Drive • Shelton, CT 06484

Phone (800) 288-6000 • Fax (800) 255-1031 • Specifications subject to change without notice.

