





Quartzlitter® Floods

3S SCHEDULED STOCK SHIPMENTS Regional Distribution Center Stock List

Part Number	Catalog Number	UPC Code	Description	CA 03	IL 06	PA 10	SC 07	TX 04	Wt. each	Ctn. Qty.	Price
QL1505	QL-1505	785988464487	Quartzlitter, 900-1500w, Gray, Less lamp	•	•	•	•	•	6.0	EA	
QL1505L15	QL-1505-L15	785988642007	Quartzlitter, Shipped with 240V, 1500w lamp in separate carton	•	•				6.0	EA	
QL505	QL-505	785988464340	Quartzlitter, 300- 500w, Gray, Less lamp	•	•	•	•	•	4.0	EA	
QL505BZ	QL-505-BZ	785988465682	Quartzlitter, 300-500w, Bronze, Less lamp	•					4.0	EA	
QL505L05	QL-505-L05	785988641956	Quartzlitter, Shipped with 120V, 500w lamp in separate carton		•	•			4.0	EA	
QL5G	QL-5G	785988991839	Wire guard for QL505 Series, Plated	•			•		1.0	EA	



Quartz Worklights

3S SCHEDULED STOCK SHIPMENTS Regional Distribution Center Stock List

Part Number	Catalog Number	UPC Code	Description	CA 03	IL 06	PA 10	SC 07	TX 04	Wt. each	Ctn. Qty.	Price
QWL1000T	QWL-1000T	785988019151	Quartz worklight, 2 x 500w, 120V Tripod mount, "2 in 1" design, 5' cord set with individual switching, Protective guards, w/ Lamps	•					27.0	EA	
QWL150C	QWL-150C	785988004683	Quartz worklight, 150w, 120V, Clamp/hook mount, 5' cord set with switch, Protective guard, w/ Lamp	•					2.0	EA	
QWL500S	QWL-500S	785988004690	Quartz worklight, 500w, 120V, Hand stand, 5' cord set with switch, 2 Lamps- 500w / 300w included	•			•		4.0	EA	



"Q" Series Quartz

3S SCHEDULED STOCK SHIPMENTS Regional Distribution Center Stock List

Part Number	Catalog Number	UPC Code	Description	CA 03	IL 06	PA 10	SC 07	TX 04	Wt. each	Ctn. Qty.	Price
Q150B	Q-150-B	785988465736	Quartz, 150w, 120V, Bronze, with Lamp		•			•	1.5	EA	
Q150W	Q-150-W	785988465743	Quartz, 150w, 120V, White, with Lamp	•		•			1.5	EA	



"Q" Series Quartz

35 SCHEDULED STOCK SHIPMENTS

Regional Distribution Center Stock List

Part Number	Catalog Number	UPC Code	Description	CA 03	IL 06	PA 10	SC 07	TX 04	Wt. each	Ctn. Qty.	Price
Q300B	Q-300-B	785988465712	Quartz, 300w, 120V, Bronze, with Lamp	●	●	●		●	2.6	EA	
Q300W	Q-300-W	785988465729	Quartz, 300w, 120V, White, with Lamp	●					1.5	EA	
Q500B	Q-500-B	785988465699	Quartz, 500w, 120V, Bronze, with Lamp	●	●	●	●	●	3.0	EA	
Q500W	Q-500-W	785988465705	Quartz, 500w, 120V, White, with Lamp	●	●		●		3.0	EA	

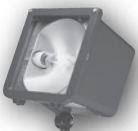


Facade Flood

35 SCHEDULED STOCK SHIPMENTS

Regional Distribution Center Stock List

Part Number	Catalog Number	UPC Code	Description	CA 03	IL 06	PA 10	SC 07	TX 04	Wt. each	Ctn. Qty.	Price
F042F8	F-042F8	785988005598	Flood, Façade, 42CFL, Quad-Tap, with Lamp	●			●		6.0	EA	
F050H1	F-050H1	785988206346	Flood, Façade, 50w PS, 120V, with Lamp	●	●				8.0	EA	
F070H1	F-070H1	785988206353	Flood, Façade, 70w PS, Quad-Tap, with Lamp	●	●	●			11.0	EA	
F070S1	F-070S1	785988206315	Flood, Façade, 70w HPS, 120V, with Lamp	●	●	●			5.0	EA	
F100H1	F-100H1	785988206360	Flood, Façade, 100w PS, Quad-Tap, with Lamp	●	●	●	●	●	11.0	EA	
F150S1	F-150S1	785988206339	Flood, Façade, 150w HPS, 120V, with Lamp	●	●	●		●	6.0	EA	



Microliter® Floodlights

35 SCHEDULED STOCK SHIPMENTS

Regional Distribution Center Stock List

Part Number	Catalog Number	UPC Code	Description	CA 03	IL 06	PA 10	SC 07	TX 04	Wt. each	Ctn. Qty.	Price
MIC0070H358	MIC-0070H-358	785988670321	Flood, Compact, 70w PS, Quad-Tap, Bronze, with Lamp	●	●	●			12.0	EA	
MIC0070S651	MIC-0070S-651	785988670109	Flood, Compact, 70w HPS, 120V, Bronze, with Lamp	●	●	●			12.0	EA	
MIC0100H358	MIC-0100H-358	785988670116	Flood, Compact, 100w PS, Quad-Tap, Bronze, with Lamp	●	●	●	●	●	13.0	EA	
MIC0150P338	MIC-0150P-338	785988007929	Flood, Compact, 150w PS, Quad-Tap, Narrow beam, Bronze, with Lamp	●			●		14.0	EA	
MIC0150P358	MIC-0150P-358	785988007912	Flood, Compact, 150w PS, Quad-Tap, Medium beam, Bronze, with Lamp	●	●	●	●	●	14.0	EA	
MIC0150S258	MIC-0150S-258	785988670550	Flood, Compact, 150w HPS, 120V, Quad-Tap, Bronze, with Lamp			●			15.0	EA	
MIC0150S651	MIC-0150S-651	785988670208	Flood, Compact, 150w HPS, 120V, Bronze, with Lamp	●	●	●			15.0	EA	



ALF Linear LED Floodlight



35 SCHEDULED STOCK SHIPMENTS

Regional Distribution Center Stock List

Part Number	Catalog Number	UPC Code	Description	CA 03	IL 06	PA 10	SC 07	TX 04	Wt. each	Ctn. Qty.	Price
ALF6LU5KBZ	ALF-6LU-5K-BZ	785988109168	Flood, Linear , 11w LED 120-277v, Wide beam, Bronze	•			•		4.0	EA	



Laramie® LFS Decorative Floods

QS 10

10-Day Quick Ship Ordering Guide

Order Limit Per Fixture Selection: 15

LFS	-	8	-		-	
SERIES	WATTAGE/SOURCE	VOLTAGE	FINISH	OPTIONS		
LFS Laramie Flood Small	PULSE START METAL HALIDE 70P 70w 100P 100w 150P 150w COMPACT FLUORESCENT 42F 42w	8 Quad-Tap* (120, 208, 240, 277V)	BZ Bronze BL Black GR Gray WH White PS Platinum	LP Lamp included		



Miniliter® V Floodlight Series



35 SCHEDULED STOCK SHIPMENTS

Regional Distribution Center Stock List

Part Number	Catalog Number	UPC Code	Description	CA 03	IL 06	PA 10	SC 07	TX 04	Wt. each	Ctn. Qty.	Price
MHSK150P8	MHS-K150P8	785988008032	Flood, Knuckle, 150w PS, Quad-Tap, Bronze, with Lamp	•					26.0	EA	
MHSK250P8	MHS-K250P8	785988008018	Flood, Knuckle, 250w PS, Quad-Tap, Bronze, with Lamp	•			•		27.0	EA	
MHSK400P5	MHS-K400P5	785988007998	Flood, Knuckle, 400w PS, 480V, Bronze, with Lamp				•		31.0	EA	
MHSK400P8	MHS-K400P8	785988007981	Flood, Knuckle, 400w PS, Quad-Tap, Bronze, with Lamp	•	•	•	•	•	31.0	EA	
MHSK400S8	MHS-K400S8	785988698769	Flood, Knuckle, 400w HPS, Quad-Tap, Bronze, with Lamp	•	•				33.0	EA	
MHSY150P8	MHS-Y150P8	785988007974	Flood, Yoke, 150w PS, Quad-Tap, Bronze, with Lamp	•	•	•		•	21.0	EA	
MHSY150S8	MHS-Y150S8	785988698752	Flood, Yoke, 150w HPS, Quad-Tap, Bronze, with Lamp	•			•		23.0	EA	
MHSY250P8	MHS-Y250P8	785988007967	Flood, Yoke, 250w PS, Quad-Tap, Bronze, with Lamp	•	•	•	•	•	22.0	EA	
MHSY250S8	MHS-Y250S8	785988698745	Flood, Yoke, 250w HPS, Quad-Tap, Bronze, with Lamp	•	•	•			24.0	EA	
MHSY320P8	MHS-Y320P8	785988008056	Flood, Yoke, 320w PS, Quad-Tap, Bronze, with Lamp				•		26.0	EA	
MHSY400P5	MHS-Y400P5	785988007950	Flood, Yoke, 400w PS, 480V, Bronze, with Lamp	•					26.0	EA	
MHSY400P8	MHS-Y400P8	785988007936	Flood, Yoke, 400w PS, Quad-Tap, Bronze, with Lamp	•	•	•	•	•	26.0	EA	
MHSY400P8PR	MHS-Y400P8-PR	785988007943	Flood, Yoke, 400w PS, Quad-Tap, Bronze, with Lamp, Twistlock photo-control receptacle				•		26.0	EA	



Miniliter® V Floodlight Series

Regional Distribution Center Stock List

Part Number	Catalog Number	UPC Code	Description	CA 03	IL 06	PA 10	SC 07	TX 04	Wt. each	Ctn. Qty.	Price
MHSY400S5	MHS-Y400S5	785988698707	Flood, Yoke, 400w HPS, 480V, Bronze, with Lamp	●				●	28.0	EA	
MHSY400S8	MHS-Y400S8	785988698714	Flood, Yoke, 400w, HPS, Quad-Tap, Bronze, with Lamp	●	●	●	●	●	28.5	EA	
MHSY400S8PR	MHS-Y400S8-PR	785988698738	Flood, Yoke, 400w, HPS, Quad-Tap, Bronze, with Lamp, Twistlock photocontrol receptacle				●		28.0	EA	



Laramie® LFM Decorative Floodlight



Regional Distribution Center Stock List

Part Number	Catalog Number	UPC Code	Description	CA 03	IL 06	PA 10	SC 07	TX 04	Wt. each	Ctn. Qty.	Price
LFMK250P8BZ	LFM-K-250P8-BZ	785988008179	Decorative flood, Knuckle, 250w PS Quad-Tap, Wide beam, with Lamp, Bronze				●		33.0	EA	
LFMK400P8BZ	LFM-K-400P8-BZ	785988008131	Decorative flood, Knuckle, 400w PS Quad-Tap, Wide beam, with Lamp, Bronze	●			●		33.0	EA	



Magnuliter® Floodlight MV Series

Regional Distribution Center Stock List

Part Number	Catalog Number	UPC Code	Description	CA 03	IL 06	PA 10	SC 07	TX 04	Wt. each	Ctn. Qty.	Price
MVK0400P268LP	MVK-0400P-268-LP	785988008216	Flood, Knuckle, 400w PS, Quad-Tap, Bronze, with Lamp				●		41.0	EA	
MVK1000H268	MVK-1000H-268 	785988656455	Flood, Knuckle, 1000w MH, Quad-Tap, Bronze, with Lamp	●	●	●	●	●	47.0	EA	
MVM0400P268LP	MVM-0400P-268-LP 	785988008193	Flood, Yoke, 400w PS, Quad-Tap, Bronze, with Lamp		●		●		41.0	EA	
MVM0400S268	MVM-0400S-268 	785988657209	Flood, Yoke, 400w HPS Quad-Tap, Bronze				●		39.0	EA	
MVM1000H265 ¹	MVM-1000H-265	785988655793	Flood, Yoke, 1000w MH 480V, Quad-Tap, Bronze, with Lamp	●			●		44.0	EA	
MVM1000H268 ¹	MVM-1000H-268 	785988652372	Flood, Yoke, 1000w MH Quad-Tap, Bronze, with Lamp	●	●	●	●	●	44.0	EA	

¹ Cord on MVM style only included

10-Day Quick Ship Ordering Guide Order Limit Per Fixture Selection: 15

MV SERIES — Vertical lamp position. Features wide, uniform beam distribution. (Coverage is four times set back distance)

CATALOG NUMBER	MOUNT	PHOTOMETRY NEMA/IES H° X V°	WATTAGE	WEIGHT LBS. (KG)	EPA FT ² (M ²)
METAL HALIDE					
MVM-0400P-265	Trunnion Mount	7(146°) x 6(119°)	400 PS	41 (18.6)	2.3 (.22)
MVM-0400P-268	Trunnion Mount	7(146°) x 6(119°)	400 PS	41 (18.6)	2.3 (.22)
MVK-1000H-268 (Lamp Included)	Slipfitter Mount	6(130°) x 6(114°)	1000	48 (22.0)	2.3 (.22)
HIGH PRESSURE SODIUM					
MVK-0400S-268	Slipfitter Mount	7(144°) x 6(113°)	400	43 (19.5)	2.3 (.22)

Note: Dark bronze finish is standard.



Laramie® Floodlight LFL Series



Regional Distribution Center Stock List

Part Number	Catalog Number	UPC Code	Description	CA 03	IL 06	PA 10	SC 07	TX 04	Wt. each	Ctn. Qty.	Price
LFLY1000HVW8BZ	LFL-Y-1000H-VW8-BZ	785988018826	Flood, Yoke, 1000w MH, Quad-Tap, Wide beam, Bronze				●		48.0	EA	



Laredo® Architectural Wallpack



Regional Distribution Center Stock List

Part Number	Catalog Number	UPC Code	Description	CA 03	IL 06	PA 10	SC 07	TX 04	Wt. each	Ctn. Qty.	Price
LNC5LU5K	LNC-5LU-5K	785988020645	Wallpack, Full cut-off, LED 13w, 120-277V, Bronze	●			●		4.0	EA	
LNC5LU5KPC	LNC-5LU-5K-PC	785988020652	Wallpack, Full cut-off, LED 13w, 120V, PC, Bronze	●			●		4.0	EA	
LCC42F81LP	LCC-42F8-1-LP	785988008292	Full cut-off, Wallpack, 42w CFL Quad, Bronze, Lamp				●		22.0	EA	
LLC250P81LP	LLC-250P8-1-LP	785988008377	Full cut-off, wallpack, 250w PS Quad, Bronze, Lamp				●		22.0	EA	
LLC400P81LP	LLC-400P8-1-LP	785988008360	Full cut-off, wallpack, 400w PS Quad, Bronze, Lamp				●		22.0	EA	
LMC150P81LP	LMC-150P8-1-LP	785988008315	Full cut-off, wallpack, 150w PS Quad, Bronze, Lamp	●			●		22.0	EA	
LMC84F81LP84	LMC-84F8-1-LP84	785988008353	Full cut-off, wallpack, 2x42w CFL Quad, Bronze, Lamp				●		22.0	EA	



10-Day Quick Ship Ordering Guide

Order Limit Per Fixture Selection: 15

LMC	-	-	-	-
SERIES	WATTAGE/SOURCE/VOLTAGE		FINISH	OPTIONS
LMC Laredo Medium Cut-off	PULSE START METAL HALIDE 70P8 70w Quad-Tap ¹ 120,208,240,277V 100P8 100w Quad-Tap ¹ 120,208,240,277V 150P8 150w Quad-Tap ¹ 120,208,240,277V ELECTRONIC FLUORESCENT 42F8 ¹ 42w Quad-Tap ¹ 120,208,240,277V 84F8 ^{1,2} 84w Quad-Tap ¹ 120,208,240,277V HIGH PRESSURE SODIUM 150S8 150w Quad-Tap ¹ 120,208,240,277V		1 Bronze 2 Black 3 Gray 4 White 5 Platinum	PHOTOCONTROL LP Lamp included
ACCESSORIES - ORDER SEPARATELY				
		CATALOG NUMBER	DESCRIPTION	
		LMC-SPC	Polycarbonate shield	

1 50/60Hz standard on fluorescent.
 2 Two lamp fluorescent units have two electronic ballasts. Field wiring can provide switching for 50% fixture output if desired.



10-Day Quick Ship Ordering Guide

Order Limit Per Fixture Selection: 15



Laredo LMC LED Wallpacks

CATALOG NUMBER	WATTAGE/SOURCE/VOLTAGE	CCT	DISTRIBUTION	LUMENS
LCC-12LU-5K-1	12 LEDs, 12w, 120-277V, 50/60Hz	5000K	III	802
LMC-18LU-5K-1	18 LEDs, 44.5w, 120-277V, 50/60Hz	5000K	IV	2038
LMC-30LU-5K-3-1	30 LEDs, 71w, 120-277V, 50/60Hz	5000K	III	4673
LMC-30LU-5K-4-1	30 LEDs, 71w, 120-277V, 50/60Hz	5000K	IV	4507



NRG® – 1100 Full Cut-off Wallpack

35 SCHEDULED STOCK SHIPMENTS

Regional Distribution Center Stock List

Part Number	Catalog Number	UPC Code	Description	CA 03	IL 06	PA 10	SC 07	TX 04	Wt. each	Ctn. Qty.	Price
NRG1111B	NRG-1111-B	785988004331	Wallpack, Compact, Full cut-off, 100w PS, 120/277/347V, Bronze, with Lamp	●			●		13.3	EA	
NRG1111W	NRG-1111-W	785988004348	Wallpack, Compact, Full cut-off, 100w PS, 120/277/347V, White, with Lamp	●					12.0	EA	
NRG1112B	NRG-1112-B	785988004379	Wallpack, Compact, Full cut-off, 100w HPS, 120/277/347V, Bronze, with Lamp	●					10.0	EA	
NRG1112W	NRG-1112-W	785988004386	Wallpack, Compact, Full cut-off, 100w HPS, 120/277/347V, White, with Lamp	●					10.0	EA	
NRG1143B	NRG-1143-B	785988004393	Wallpack, Compact, Full cut-off, 42w CFL 120-277V, Bronze, with Lamp	●	●	●	●	●	7.0	EA	
NRG1143W	NRG-1143-W	785988004409	Wallpack, Compact, Full cut-off, 42w CFL 120-277V, White, with Lamp	●					7.0	EA	
NRG1151B	NRG-1151-B	785988004294	Wallpack, Compact, Full cut-off, 50w PS, 120/277V, Bronze, with Lamp	●					9.0	EA	
NRG1151W	NRG-1151-W	785988004300	Wallpack, Compact, Full cut-off, 50w PS, 120/277V, White, with Lamp	●					9.0	EA	
NRG1171B	NRG-1171-B	785988004317	Wallpack, Compact, Full cut-off, 70w PS, 120/277/347V, Bronze, with Lamp	●			●		11.0	EA	
NRG1171W	NRG-1171-W	785988004324	Wallpack, Compact, Full cut-off, 70w PS, 120/277/347V, White, with Lamp	●					11.0	EA	
NRG1172B	NRG-1172-B	785988004355	Wallpack, Compact, Full cut-off, 70w HPS, 120/277/347V, Bronze, with Lamp	●					9.0	EA	
NRG1172W	NRG-1172-W	785988004362	Wallpack, Compact, Full cut-off, 70w HPS, 120/277/347V, White, with Lamp	●					9.0	EA	



Geometric Wall Sconces

35 SCHEDULED STOCK SHIPMENTS

Regional Distribution Center Stock List

Part Number	Catalog Number	UPC Code	Description	CA 03	IL 06	PA 10	SC 07	TX 04	Wt. each	Ctn. Qty.	Price
RDI150P8FTBZ	RDI-150P8-FT-BZ	785988019489	Radius sconce, 150w PS, Quad, Forward throw, Bronze, Lamp	●					20.0	EA	
RDI150P8WTBZ	RDI-150P8-WT-BZ	785988016761	Radius sconce, 150w PS, Quad, Wide throw, Bronze, Lamp	●					20.0	EA	
RDI84F8WTBZ	RDI-84F8-WT-BZ	785988019472	Radius sconce, 2x42w CFL, Quad, Wide throw, Bronze, Lamp	●					18.0	EA	
TRP150P8FTBZ	TRP-150P8-FT-BZ	785988019489	Trapezoid sconce, 150w PS, Quad, Forward throw, Bronze, Lamp	●					20.0	EA	
TRP150P8WTBZ	TRP-150P8-WT-BZ	785988015962	Trapezoid sconce, 150w PS, Quad, Wide throw, Bronze, Lamp	●					20.0	EA	
TRP42F8FTBZ	TRP-42F8-FT-BZ	785988018802	Trapezoid sconce, 42w CFL, Quad, Forward throw, Bronze, Lamp	●					16.0	EA	
TRP84F8WTBZ	TRP-84F8-WT-BZ	785988019496	Trapezoid sconce, 2x42w CFL, Quad, Wide throw, Bronze, Lamp	●					18.0	EA	
TRP42F8FTBZ	TRP-42F8-FT-BZ	785988018802	Trapezoid sconce, 42w CFL, Quad, Forward throw, Bronze, Lamp	●					16.0	EA	
TRP84F8WTBZ	TRP-84F8-WT-BZ	785988019496	Trapezoid sconce, 2x42w CFL, Quad, Wide throw, Bronze, Lamp	●					18.0	EA	



Compact Wall Sconces

35 SCHEDULED STOCK SHIPMENTS

Regional Distribution Center Stock List

Part Number	Catalog Number	UPC Code	Description	CA 03	IL 06	PA 10	SC 07	TX 04	Wt. each	Ctn. Qty.	Price
QSPC13LU5KBZ	QSPC-13LU-5K-BZ	785988019403	Quarter sphere, 23w LED , 120-277V, Bronze	●					8.0	EA	
QSPC42F8BZ	QSPC-42F8-BZ	785988018383	Quarter sphere, 42w CFL, Quad-Tap, Bronze, Lamp	●					6.0	EA	
QSPC42F8PL	QSPC-42F8-PL	785988018390	Quarter sphere, 42w CFL, Quad-Tap, Platinum, Lamp	●					6.0	EA	
QSPC42F9BZBOC	QSPC-42F9-BZ-BOC	785988018413	Quarter sphere, 42w CFL, 120/277V, Battery, Bronze, Lamp	●					8.0	EA	
QSPC70P8BZ	QSPC-70P8-BZ	785988018652	Quarter sphere, 70w PS, Quad-Tap, Bronze, Lamp	●					10.0	EA	
QSPC70P8PL	QSPC-70P8-PL	785988018369	Quarter sphere, 70w PS, Quad-Tap, Platinum, Lamp	●					10.0	EA	
RDIC42F8BZ	RDIC-42F8-BZ	785988018314	Radius, 42w CFL, Quad-Tap, Bronze, Lamp	●					6.0	EA	
RDIC42F8PL	RDIC-42F8-PL	785999018321	Radius, 42w CFL, Quad-Tap, Platinum, Lamp	●					6.0	EA	
RDIC42F9BZBOC	RDIC-42F9-BZ-BOC	785988018345	Radius, 42w CFL, 120/277V, Battery, Bronze, Lamp	●					8.0	EA	
RDIC70P8BZ	RDIC-70P8-BZ	785988018284	Radius, 70w PS, Quad-Tap, Bronze, Lamp	●					11.0	EA	
RDIC70P8PL	RDIC-70P8-PL	785988018291	Radius, 70w PS, Quad-Tap, Platinum, Lamp	●					11.0	EA	
TRPC42F8BZ	TRPC-42F8-BZ	785988018451	Trapezoid, 42w CFL, Quad-Tap, Bronze, Lamp	●			●		6.0	EA	
TRPC42F8PL	TRPC-42F8-PL	785988018437	Trapezoid, 42w CFL, Quad-Tap, Platinum, Lamp	●					6.0	EA	
TRPC42F9BZBOC	TRPC-42F9-BZ-BOC	785988018482	Trapezoid, 42w CFL, 120/277V, Battery, Bronze, Lamp	●					8.0	EA	
TRPC70P8BZ	TRPC-70P8-BZ	785988018420	Trapezoid, 70w PS, Quad-Tap, Bronze, Lamp	●					11.0	EA	
TRPC70P8PI	TRPC-70P8-PL	785988018437	Trapezoid, 70w PS, Quad-Tap, Platinum, Lamp	●					11.0	EA	



WM Series Compact Wall Sconces

35 SCHEDULED STOCK SHIPMENTS

Regional Distribution Center Stock List

Part Number	Catalog Number	UPC Code	Description	CA 03	IL 06	PA 10	SC 07	TX 04	Wt. each	Ctn. Qty.	Price
WMR213F1PC	WMR-213F1-PC	785988003976	Sconce, Radius, 2x13w CFL ELB, 120-277V, Bronze polycarbonate, Full cut-off, with Lamps	●					6.5	EA	
WMR42F1PC	WMR-42F1-PC	785988003983	Sconce, Radius, 42w CFL, 120-277V, Bronze polycarbonate, Full cut-off, with Lamp	●					6.0	EA	
WMR70P6	WMR-70P6	785988003990	Sconce, Radius, 70w PS, 120/277/347V, Bronze polycarbonate, Full cut-off, with Lamp	●					11.0	EA	
WMS213F1PC	WMS-213F1-PC	785988004263	Sconce, Soft corner, 2x13w CFL ELB, 120-277V, Bronze polycarbonate, Full cut-off, with Lamps	●					6.5	EA	
WMS42F1PC	WMS-42F1-PC	785988004270	Sconce, Soft corner, 42w CFL, 120-277V, Bronze polycarbonate, Full cut-off, with Lamp	●					6.5	EA	
WMS70P6	WMS-70P6	785988004287	Sconce, Soft corner, 70w PS, 120/277/347V, Bronze polycarbonate, Full cut-off, with Lamp	●					11.0	EA	



Wallpack, Polycarbonate Refractor Vertical Lamp Position – PVL3 Perimaliter®III Series

3 SCHEDULED STOCK SHIPMENTS

Regional Distribution Center Stock List

Part Number	Catalog Number	UPC Code	Description	CA 03	IL 06	PA 10	SC 07	TX 04	Wt. each	Ctn. Qty.	Price
PVL3070P18BZL	PVL3-070P-18-BZ-L	785988005888	Wallpack, 70w PS, Quad-Tap, Bronze, with Lamp	●					15.0	EA	
PVL3070S18BZ	PVL3-070S-18-BZ	785988005895	Wallpack, 70w HPS, Quad-Tap, Bronze	●					13.0	EA	
PVL3070S18BZL	PVL3-070S-18-BZ-L	785988005901	Wallpack, 70w HPS, Quad-Tap, Bronze, with Lamp	●					13.0	EA	
PVL3100P18BZL	PVL3-100P-18-BZ-L	785988005918	Wallpack, 100w PS, Quad-Tap, Bronze, with Lamp	●	●	●	●		15.0	EA	
PVL3100S18BZ	PVL3-100S-18-BZ	785988005925	Wallpack, 100w HPS, Quad-Tap, Bronze	●					18.0	EA	
PVL3100S18BZL	PVL3-100S-18-BZ-L	785988005932	Wallpack, 100w HPS, Quad-Tap, Bronze, with Lamp	●					18.0	EA	
PVL3150P18BZ	PVL3-150P-18-BZ	785988008452	Wallpack, 150w PS, Quad-Tap, Bronze	●			●		20.0	EA	
PVL3150P18BZL	PVL3-150P-18-BZ-L	785988008469	Wallpack, 150w PS, Quad-Tap, Bronze, with Lamp	●	●	●		●	20.0	EA	
PVL3150S18BZ	PVL3-150S-18-BZ	785988005956	Wallpack, 150w HPS, Quad-Tap, Bronze			●		●	18.0	EA	
PVL3150S18BZL	PVL3-150S-18-BZ-L	785988005963	Wallpack, 150w HPS, Quad-Tap, Bronze, with Lamp	●	●	●		●	18.0	EA	
PVL3150S51BZL	PVL3-150S-51-BZ-L	785988007844	Wallpack, 150w HPS, 120V, Bronze, with Lamp	●	●	●		●	13.0	EA	



CFL Perimaliter®III Polycarbonate Refractor with Optional Egress Back-up

3 SCHEDULED STOCK SHIPMENTS

Regional Distribution Center Stock List

Part Number	Catalog Number	UPC Code	Description	CA 03	IL 06	PA 10	SC 07	TX 04	Wt. each	Ctn. Qty.	Price
PVL3242F18BZL	PVL3-242F-18-BZ-L	785988015948	Wallpack, 2x42w CFL, Quad-Tap, Bronze, with Lamps	●					12.0	EA	
PVL3242F18BZL-2BOC	PVL3-242F-18-BZ-L-2BOC	785988015955	Wallpack, 2x42w CFL, Quad-Tap, with two 0°C batteries, Bronze, with Lamps	●					17.0	EA	



Perimaliter III® Wallpack, Glass Refractor, Vertical Lamp Position, High Performance

3 SCHEDULED STOCK SHIPMENTS

Regional Distribution Center Stock List

Part Number	Catalog Number	UPC Code	Description	CA 03	IL 06	PA 10	SC 07	TX 04	Wt. each	Ctn. Qty.	Price
80033990104	800-3399-0104	785988391646	Replacement refractor/door Assy for PGM/PGL/PVL, Bronze				●		8.0	EA	
PGL250P1281LP	PGL-250P-128-1-LP	785988566662	Wallpack, Glass refractor, 250w PS, Quad-Tap, Bronze, with Lamp	●	●		●		28.0	EA	
PGL350P1281	PGL-350P-128-1	785988010288	Wallpack, Glass refractor, 350w PS, Quad-Tap, Bronze		●	●			33.0	EA	
PGL350P1281LP	PGL-350P-128-1-LP	785988566679	Wallpack, Glass refractor, 350w PS, Quad-Tap, Bronze, with Lamp	●	●	●	●	●	30.3	EA	

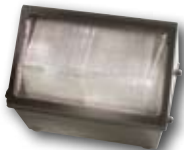


Perimaliter III® Wallpack, Glass Refractor, Vert. Lamp Position High Performance



Regional Distribution Center Stock List

Part Number	Catalog Number	UPC Code	Description	CA 03	IL 06	PA 10	SC 07	TX 04	Wt. each	Ctn. Qty.	Price
PGL400S1281	PGL-400S-128-1	785988566440	Wallpack, Glass refractor, 400w HPS, Quad-Tap, Bronze			●			36.0	EA	
PGL400S1281LP	PGL-400S-128-1-LP	785988565184	Wallpack, Glass refractor, 400w HPS, Quad-Tap, Bronze, w/ Lamp	●			●		36.0	EA	
PGM3070P18BZL	PGM3-070P-18-BZ-L	785988008551	Wallpack, Glass refractor 70w PS, Quad-Tap, Bronze, w/ Lamp	●					24.0	EA	
PGM3070S18BZ	PGM3-070S-18-BZ	785988008582	Wallpack, Glass refractor 70w HPS, Quad-Tap, Bronze	●					23.0	EA	
PGM3100P18BZL	PGM3-100P-18-BZ-L	785988005789	Wallpack, Glass refractor 100w PS, Quad-Tap, Bronze, w/ Lamp	●		●	●		25.0	EA	
PGM3100S18BZ	PGM3-100S-18-BZ	785988008605	Wallpack, Glass refractor 100w HPS, Quad-Tap, Bronze	●					24.0	EA	
PGM3150P18BZ	PGM3-150P-18-BZ	785988019236	Wallpack, Glass refractor 150w PS, Quad-Tap, Bronze	●			●		25.0	EA	
PGM3150P18BZL	PGM3-150P-18-BZ-L	785988008568	Wallpack, Glass refractor 150w PS, Quad-Tap, Bronze, w/ Lamp	●	●	●	●	●	25.0	EA	
PGM3150S18BZ	PGM3-150S-18-BZ	785988005796	Wallpack, Glass refractor 150w HPS, Quad-Tap, Bronze	●					25.0	EA	
PGM3150S18BZL	PGM3-150S-18-BZ-L	785988005819	Wallpack, Glass refractor 150w HPS, Quad-Tap, Bronze, w/ Lamp	●	●		●		25.0	EA	
PGM3250P18BZ	PGM3-250P-18-BZ	785988019243	Wallpack, Glass refractor, 250w PS, Quad-Tap, Bronze	●					27.0	EA	
PGM3250P18BZL	PGM3-250P-18-BZ-L	785988008575	Wallpack, Glass refractor, 250w PS, Quad-Tap, Bronze, w/ Lamp	●	●	●	●	●	27.0	EA	
PGM3250S18BZ	PGM3-250S-18-BZ	785988005864	Wallpack, Glass refractor, 250w HPS, Quad-Tap, Bronze	●					33.0	EA	
PGM3250S18BZL	PGM3-250S-18-BZ-L	785988005871	Wallpack, Glass refractor 250w HPS, Quad-Tap, Bronze, w/ Lamp	●					33.0	EA	
PGM3LB	PGM3-LB	785988005772	Wallpack, Glass refractor, LESS ballast, Mogul socket, Bronze	●					17.0	EA	

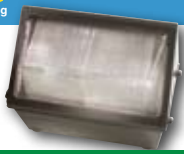


WGH Series – Horizontal Lamp Low Profile Wallpack



Regional Distribution Center Stock List

Part Number	Catalog Number	UPC Code	Description	CA 03	IL 06	PA 10	SC 07	TX 04	Wt. each	Ctn. Qty.	Price
WGH150P	WGH-150P	785988005680	Wallpack, Glass refractor, 150w PS, Quad-Tap, Bronze, with Lamp	●	●	●	●	●	11.8	EA	
WGH150S	WGH-150S	785988465934	Wallpack, Glass refractor, 150 HPS, Quad-Tap, Bronze, with Lamp	●	●	●	●	●	17.0	EA	
WGH150S120	WGH-150S120	785988005581	Wallpack, Glass refractor, 150 HPS, 120V, Bronze, with Lamp				●		16.0	EA	
WGH250P	WGH-250P	785988005697	Wallpack, Glass refractor, 250 PS, Quad-Tap, Bronze, with Lamp	●	●	●	●	●	34.0	EA	
WGH250S	WGH-250S	785988465989	Wallpack, Glass refractor, 250 HPS, Quad-Tap, Bronze, with Lamp	●			●		27.0	EA	
WGH320P	WGH-320P	785988005710	Wallpack, Glass refractor, 320 PS, Quad-Tap, Bronze, with Lamp	●					34.0	EA	
WGH400P	WGH-400P	785988005727	Wallpack, Glass refractor, 400 PS, Quad-Tap, Bronze, with Lamp	●	●	●	●	●	37.0	EA	
WGH400S	WGH-400S	785988465996	Wallpack, Glass refractor, 400 HPS, Quad-Tap, Bronze, with Lamp	●		●			28.0	EA	



WGH Series – Horizontal Lamp Low Profile Wallpack

35 SCHEDULED STOCK SHIPMENTS

Regional Distribution Center Stock List

Part Number	Catalog Number	UPC Code	Description	CA 03	IL 06	PA 10	SC 07	TX 04	Wt. each	Ctn. Qty.	Price
WGH84F	WGH-84F	785988005642	Wallpack, Glass refractor, 2x42w CFL, Quad-Tap, Bronze, with Lamps	•			•		10.0	EA	
WGH84FMS42	WGH-84F-MS42	785988019182	Wallpack, Glass refractor, 2x42w CFL, 120V, Motion control, Bronze, with Lamps	•					11.0	EA	



WGC Series Full Cut-off, Cast Aluminum Wallpack

35 SCHEDULED STOCK SHIPMENTS

Regional Distribution Center Stock List

Part Number	Catalog Number	UPC Code	Description	CA 03	IL 06	PA 10	SC 07	TX 04	Wt. each	Ctn. Qty.	Price
WGC100H	WGC-100H	785988465903	Compact full cut-off, 100w PS, Quad, with Lamp, Bronze	•			•		12.0	EA	
WGC100S	WGC-100S	785988465910	Compact full cut-off, 100w HPS, Quad, with Lamp, Bronze	•			•		13.0	EA	
WGC42F	WGC-42F	785988019755	Compact full cut-off, 42w CFL, Quad, with Lamp, Bronze	•			•		8.0	EA	
WGC50H	WGC-50H	785988465880	Compact full cut-off, 50w PS, 120/277V, with Lamp, Bronze	•					11.0	EA	
WGC70H	WGC-70H	785988465897	Compact full cut-off, 70w PS, Quad, with Lamp, Bronze	•					13.0	EA	



WGM Decorative Full Cut-off Wallpacks

35 SCHEDULED STOCK SHIPMENTS

Regional Distribution Center Stock List

Part Number	Catalog Number	UPC Code	Description	CA 03	IL 06	PA 10	SC 07	TX 04	Wt. each	Ctn. Qty.	Price
WGM100P	WGM-100P	785988019656	Mid-size wallpack, full cut-off, 100PS, Quad-Tap, Lamp, Bronze	•					18.0	EA	
WGM150P	WGM-150P	785988019663	Mid-size wallpack, full cut-off, 150PS, Quad-Tap, Lamp, Bronze	•			•		19.0	EA	
WGM150S	WGM-150S	785988019670	Mid-size wallpack, full cut-off, 100HPS, Quad-Tap, Lamp, Bronze	•					18.0	EA	
WGM84F	WGM-84F	785988019687	Mid-size wallpack, full cut-off, 2x42CFL, 120-277V, Lamps, Bronze	•					16.0	EA	
WGM84FMS42	WGM-84F-MS42	785988019694	Mid-size wallpack, full cut-off, 2x42CFL, 120V, Motion, Lamps, Bronze	•					16.0	EA	



WGL Decorative Full Cut-off Wallpacks



Regional Distribution Center Stock List

Part Number	Catalog Number	UPC Code	Description	CA 03	IL 06	PA 10	SC 07	TX 04	Wt. each	Ctn. Qty.	Price
WGL250P	WGL-250P	785988019700	Large wallpack, full cut-off, 250 PS, Quad-Tap, Lamp, Bronze	•			•		27.0	EA	
WGL250S	WGL-250S	785988019731	Large wallpack, full cut-off, 250 HPS, Quad-Tap, Lamp, Bronze	•					32.0	EA	
WGL320P	WGL-320P	785988019717	Large wallpack, full cut-off, 320 PS, Quad-Tap, Lamp, Bronze	•					28.0	EA	
WGL400P	WGL-400P	785988019724	Large wallpack, full cut-off, 400 PS, Quad-Tap, Lamp, Bronze	•			•		30.0	EA	
WGL400S	WGL-400S	785988019748	Large wallpack, full cut-off, 400 HPS, Quad-Tap, Lamp, Bronze	•					32.0	EA	

Wallpack Accessories

Part Number	Catalog Number	UPC Code	Description	CA 03	IL 06	PA 10	SC 07	TX 04	Wt. each	Ctn. Qty.	Price
PGPS	PG-PS	783936377056	Polycarbonate shield, PGM/ PGL/ PGS				•		10.0	EA	
PGWG	PG-WG	783936377070	Wire guard, PGM/ PGL/ PGS		•	•	•		1.0	EA	
PVL3V	PVL3V	785988012077	Visor, Full cut-off, Bronze, PVL3/ PGL/ PRS/ PGS	•			•		6.0	EA	



Compact Wall Fixtures, NRG® Family



Regional Distribution Center Stock List

Part Number	Catalog Number	UPC Code	Description	CA 03	IL 06	PA 10	SC 07	TX 04	Wt. each	Ctn. Qty.	Price
NRG121	NRG-121	785988642175	Entry wall mount, 50w HPS, 120V, with Lamp		•				5.0	EA	
NRG1284W	NRG-128-4W	785988642236	Entry wall mount, 28w CFL, 120V, with Lamp	•		•			4.0	EA	
NRG315	NRG-315	785988643233	Compact shielded wallpack, 50w PS, 120/277V, with Lamp				•		7.0	EA	
NRG806	NRG-806	785988643806	Wall/Ceiling, 13w CFL, 120V, with Lamp	•			•		3.0	EA	



NRG® 200B Decorative Compact Wallpack

3 SCHEDULED STOCK SHIPMENTS

Regional Distribution Center Stock List

Part Number	Catalog Number	UPC Code	Description	CA 03	IL 06	PA 10	SC 07	TX 04	Wt. each	Ctn. Qty.	Price
NRG204B	NRG-204B	785988019304	Wallpack, Decorative compact, 42w CFL, 120-277V, Bronze, Lamp	•			•		6.0	EA	
NRG204BMS	NRG-204BMS	785988020328	Wallpack, Decorative compact, 42w CFL, 120V Motion Sensor, Brz, Lp	•			•		7.0	EA	
NRG204BPC	NRG-204B-PC	785988021311	Wallpack, Decorative compact, 42w CFL, 120V, Photocontrol, Brz, Lp	•			•		6.0	EA	
NRG206BPC	NRG-206B-PC	785988022298	Wallpack, Decorative compact, 26w CFL, 120V, Photocontrol, Brz, Lp	•			•		6.0	EA	
NRG207B	NRG-207B	785988023250	Wallpack, Decorative compact, 70w HPS, 120V, Bronze, Lamp	•			•		5.0	EA	
NRG207BPC	NRG-207B-PC	785988024267	Wallpack, Decorative compact, 70w HPS, 120V, Photocontrol, Brz, Lp	•			•		5.0	EA	
NRG250B	NRG-250B	785988025274	Wallpack, Decorative compact, 50w PS, 120V, Bronze, Lamp	•			•		6.0	EA	
NRG250BPC	NRG-250B-PC	785988026281	Wallpack, Decorative compact, 50w PS, 120V, Photocontrol, Brz, Lp	•			•		6.0	EA	



Compact Wall Fixtures, NRG® Family

3 SCHEDULED STOCK SHIPMENTS

Regional Distribution Center Stock List

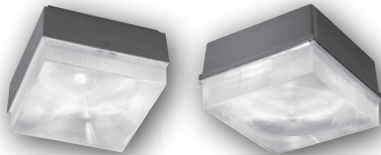
Part Number	Catalog Number	UPC Code	Description	CA 03	IL 06	PA 10	SC 07	TX 04	Wt. each	Ctn. Qty.	Price
NRG301B	NRG-301B	785988656714	Wallpack, Vandal resistant, 50w HPS, 120V, with Lamp	•	•	•			6.0	EA	
NRG301BPC	NRG-301B-PC	785988465811	Wallpack, Vandal resistant, 50w HPS, 120V, PC, with Lamp	•	•	•	•		5.0	EA	
NRG304B	NRG-304B	785988567164	Wallpack, Vandal resistant, 42w CFL, 120V, with Lamp	•			•		5.0	EA	
NRG304BMS	NRG-304B-MS	785988019175	Wallpack, Vandal resistant, 42w CFL, 120V, w/ Motion sensor, Lamp	•			•		5.0	EA	
NRG304BPC	NRG-304B-PC	785988465835	Wallpack, Vandal resistant, 42w CFL, 120V, PC, with Lamp	•			•		4.0	EA	
NRG304BPCW	NRG-304B-PC-W	785988005611	Wallpack, Vandal resistant, 42w CFL, 120V, PC, White, with Lamp	•					6.0	EA	
NRG306B	NRG-306B	785988567119	Wallpack, Vandal resistant, 26w CFL, 120V, with Lamp	•	•	•	•		6.0	EA	
NRG306BPC	NRG-306B-PC	785988567102	Wallpack, Vandal resistant, 26w CFL, 120V, PC, with Lamp	•			•		6.0	EA	
NRG306BPCW	NRG-306B-PC-W	785988005628	Wallpack, Vandal resistant, 26w CFL, 120V, PC, White, with Lamp	•					6.0	EA	
NRG307B	NRG-307B	785988567157	Wallpack, Vandal resistant, 70w HPS, 120V, with Lamp	•	•	•	•	•	6.0	EA	
NRG307BPC	NRG-307B-PC	785988465828	Wallpack, Vandal resistant, 70w HPS, 120V, PC, with Lamp	•	•	•	•	•	6.0	EA	
NRG310LU	NRG-310LU	785988019458	Wallpack, Vandal resistant, LED 15w 120-277V, Bronze	•			•		5.0	EA	
NRG310LUPC	NRG-310LU-PC	785988019571	Wallpack, Vandal resistant, LED 15w 120V, PC, Bronze	•			•		5.0	EA	
NRG350B	NRG-350B	785988567133	Wallpack, Vandal resistant, 50w PS, 120V, with Lamp	•	•	•	•	•	5.0	EA	
NRG350BPC	NRG-350B-PC	785988567126	Wallpack, Vandal resistant, 50w PS, PC, 120V, with Lamp	•	•	•	•		5.0	EA	



Compact Refractor Wallpack

Regional Distribution Center Stock List

Part Number	Catalog Number	UPC Code	Description	CA 03	IL 06	PA 10	SC 07	TX 04	Wt. each	Ctn. Qty.	Price
WGH100H	WGH-100H	785988465859	Glass refractor, 100w PS, Quad-Tap, Bronze, with Lamp	•	•	•	•	•	11.0	EA	
WGH70H	WGH-70H	785988465842	Glass refractor, 70w PS, Quad-Tap, Bronze, with Lamp	•	•	•	•	•	12.0	EA	
WPH100S	WPH-100S	785988465873	Polycarbonate refractor, 100w HPS, 120V, Bronze, with Lamp	•	•	•	•		8.0	EA	
WPH70S	WPH-70S	785988465866	Polycarbonate refractor, 70w HPS, 120V, Bronze, with Lamp		•	•			16.0	EA	



Lumasquare® Family Performance Ceiling Mounts

Regional Distribution Center Stock List

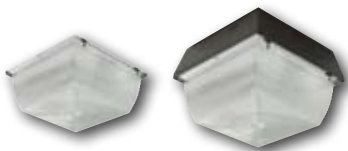
Part Number	Catalog Number	UPC Code	Description	CA 03	IL 06	PA 10	SC 07	TX 04	Wt. each	Ctn. Qty.	Price
NRG401	NRG-401	785988642311	Ceiling mount, 10" Sq, 50w HPS, 120V, with Lamp	•	•	•		•	7.0	EA	
NRG413P8	NRG-413P8	785988015566	Ceiling mount, 14" Sq, 100w PS, Quad-Tap, with Lamp	•	•	•			17.0	EA	
NRG415P8	NRG-415P8	785988-00850	Ceiling mount, 14" Sq, 150w PS, Quad-Tap, with Lamp	•	•	•	•	•	19.0	EA	

10-Day Quick Ship Ordering Guide

Order Limite Per Fixture Selection: 15

CATALOG NUMBER ¹	WATTAGE	VOLTAGE	BALLAST TYPE	MIN. START TEMP	INPUT AMPS	WEIGHT LBS. (KG)
FLUORESCENT						
NRG-456¹	2 x 28	120	NPF Reactor	-20F	1.2	6 (2.7)

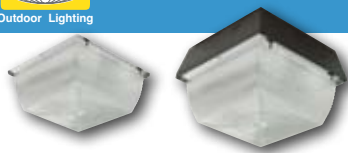
1 CSA certified for outdoor applications only. UL indoor / outdoor
 Note Lamp included.



S Series Vandal Resistant

Regional Distribution Center Stock List

Part Number	Catalog Number	UPC Code	Description	CA 03	IL 06	PA 10	SC 07	TX 04	Wt. each	Ctn. Qty.	Price
S942F	S9-42F	785988005116	Surface square, Wet location, 42w CFL, 120-277V, Low profile, Polycarbonate refractor, TP screws, Lamp	•		•			1.0	EA	
S970H	S9-70H	785988005086	Surface square, Wet location, 70w PS, Quad-Tap, Polycarbonate refractor, TP screws, Lamp, Bronze	•			•		10.3	EA	
S970S	S9-70S	785988005093	Surface square, Wet location, 70w HPS, Quad-Tap, Polycarbonate refractor, TP screws, Lamp, Bronze	•					10.0	EA	
S12100H	S12-100H	785988005123	Surface square, Wet location, 100w PS, Quad-Tap, Polycarbonate refractor, TP screws, Lamp, Bronze	•			•		15.0	EA	



S Series Vandal Resistant

35 SCHEDULED STOCK SHIPMENTS

Regional Distribution Center Stock List

Part Number	Catalog Number	UPC Code	Description	CA 03	IL 06	PA 10	SC 07	TX 04	Wt. each	Ctn. Qty.	Price
S12150P	S12-150P	785988008483	Surface square, Wet location, 150w PS, Quad-Tap, Polycarbonate refractor, TP screws, Lamp, Bronze	•	•	•	•	•	16.0	EA	
S12150S	S12-150S	785988005147	Surface square, Wet location, 150w HPS, Quad-Tap, Polycarbonate refractor, TP screws, Lamp, Bronze	•					16.0	EA	
S1284F	S12-84F	785988005161	Surface square, Wet location, 2x42w CFL, 120-277V, Low profile, Polycarbonate refractor, TP screws, Lamps	•			•		8.0	EA	



R Series Vandal Resistant

35 SCHEDULED STOCK SHIPMENTS

Regional Distribution Center Stock List




Part Number	Catalog Number	UPC Code	Description	CA 03	IL 06	PA 10	SC 07	TX 04	Wt. each	Ctn. Qty.	Price
R12100H	R12-100H	785988005215	Surface round, Wet location, 100w PS, Quad-Tap, Polycarbonate refractor, TP screws, Lamp, Bronze	•					15.0	EA	
R12150P	R12-150P	785988008476	Surface round, Wet location, 150w PS, Quad-Tap, Polycarbonate refractor, TP screws, Lamp, Bronze	•					16.0	EA	
R12150S	R12-150S	785988005239	Surface round, Wet location, 150w HPS, Quad-Tap, Polycarbonate refractor, TP screws, Lamp, Bronze	•					16.0	EA	
R1284F	R12-84F	785988005246	Surface round, Wet location, 2x42w CFL, 120-277V, low profile, Polycarbonate refractor, TP screws, Lamps	•					10.0	EA	
R942F	R9-42F	785988005192	Surface round, Wet location, 42w CFL, 120-277V, Low profile, Polycarbonate refractor, TP screws, Lamp	•					5.0	EA	
R970H	R9-70H	785988005178	Surface round, Wet location, 70w PS, Quad-Tap, Polycarbonate refractor, TP screws, Lamp, Bronze	•					10.0	EA	
R970S	R9-70S	785988005185	Surface round, Wet location, 70w HPS, Quad-Tap, Polycarbonate refractor, TP screws, Lamp, Bronze	•					10.0	EA	



DD Series – Dusk to Dawn

35 SCHEDULED STOCK SHIPMENTS

Regional Distribution Center Stock List

Part Number	Catalog Number	UPC Code	Description	CA 03	IL 06	PA 10	SC 07	TX 04	Wt. each	Ctn. Qty.	Price
DD70S	DD70S 	785988005765	Wall mount, 9" Screw-on optics, 70w HPS, 120V, Kit with lamp, UL approved		•				4.0	EA	
DDR100S	DDR-100S 	785988466146	30" Alum arm, 12" Head, 100w HPS, 120V, Kit with lamp	•					7.0	EA	
DDR150S	DDR-150S 	785988466153	30" Alum arm, 12" Head, 150w HPS 120V, Kit with lamp		•	•		•	7.0	EA	



DD Series – Dusk to Dawn



Regional Distribution Center Stock List

Part Number	Catalog Number	UPC Code	Description	CA 03	IL 06	PA 10	SC 07	TX 04	Wt. each	Ctn. Qty.	Price
DDR5AP	DDR-5AP	785988466184	Replacement optical assembly with latches for DDR fixtures	•					2.0	EA	
DDS100P	DDS-100P	785988012060	24" Alum arm, 12" Screw-on optics, 100w PS, 120V, Kit with lamp, UL approved	•			•		6.0	EA	
DDS100S	DDS-100S	785988466122	24" Alum arm, 12" Screw-on optics, 100w HPS, 120V, Kit with lamp, UL approved	•				•	5.0	EA	
DDS150S	DDS-150S	785988466139	24" Alum arm, 12" Screw-on optics, 150w HPS, 120V, Kit with lamp, UL approved	•	•	•	•	•	7.0	EA	
DDS65F	DDS-65F	785988014248	24" Alum arm, 12" Screw-on optics, 65w CFL, 120V, Kit with lamp, UL approved	•			•		4.0	EA	
DDS70P	DDS-70P	785988012053	24" Alum arm, 12" Screw-on optics, 70w PS, 120V, Kit with lamp, UL approved	•					6.0	EA	
DDS70S	DDS-70S	785988466115	24" Alum arm, 12" Screw-on optics, 70w HPS, 120V, Kit with lamp, UL approved	•	•				5.0	EA	



RM Series – Standard Roadway Configurations



10-Day Quick Ship Ordering Guide

Order Limit Per Fixture Selection: 15

CATALOG NUMBER	DESCRIPTION	EPA	BALLAST TYPE	WEIGHT	
				LBS.	KGS.
FIXTURE HOUSINGS: BREATHING FELT GASKET OPTICAL SEAL, WITH PHOTOCELL RECEPTACLE, TYPE III DISTRIBUTION					
RMG-3-3	Glass refractor, MN III, Gray	0.6	-	16	7.3
RLG-3-3	Glass refractor, MN III, Gray	1.1	-	25	11.3
BALLAST DOORS: SCREW AND LATCH CLOSURE, HPF BALLAST, ANSI LABEL, UL LISTED					
RMD-25S38-3	250w HPS, Quad, Gray		Auto reg	14	6.4
RLD-40S38-3	400w HPS, Quad, Gray		Auto reg	19	8.6

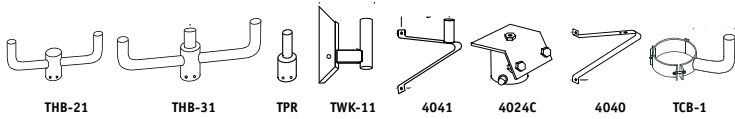


Wet Location Vaportite



Regional Distribution Center Stock List

Part Number	Catalog Number	UPC Code	Description	CA 03	IL 06	PA 10	SC 07	TX 04	Wt. each	Ctn. Qty.	Price
VBGG-150	VBGG-150	785988467167	Globe & guard, 150w Incandescent, Ceiling/pendant, Platinum	•	•		•	•	3.0	EA	
VBGG-300	VBGG-300	785988467174	Globe & guard, 300w Incandescent, Ceiling/pendant, Platinum	•			•		4.0	EA	
VWGG-150	VWGG-150	785988467181	Globe & guard, 150w Incandescent, Wall box, Platinum	•	•	•	•	•	3.5	EA	
VWGG-300	VWGG-300	785988467198	Globe & guard, 300w Incandescent, Wall box, Platinum				•		4.5	EA	



Mounting Brackets & Accessories

3 SCHEDULED STOCK SHIPMENTS Regional Distribution Center Stock List

Part Number	Catalog Number	UPC Code	Description	CA 03	IL 06	PA 10	SC 07	TX 04	Wt. each	Ctn. Qty.	Price
4041	4041	785988310579	Bracket, Wall mount	●	●	●	●	●	7.0	EA	
4024C	4024C	785988310326	Slipfitter, 2 3/8" Tenon	●	●	●	●	●	2.0	EA	
4040	4040	785988310555	Bracket, Wall mount	●	●	●	●	●	5.0	EA	
TCB1	TCB-1	785988496501	Pole clamp-on bracket, Bronze			●		●	15.0	EA	
THB21	THB-21	785988498420	Accessory, Flood, Tenon, Two, Bronze	●	●	●	●	●	12.0	EA	
THB31	THB-31	785988498437	Accessory, Flood, Tenon, Three, Bronze	●		●			30.0	EA	
TPR3	TPR-3	785988500451	Accessory, Flood, Tenon, Reducer, Pole, Bronze	●					8.0	EA	
TPR4	TPR-4	785988500505	Accessory, Flood, Tenon, Reducer, Pole, Bronze	●					9.0	EA	
TWK11	TWK-11	785988502202	Bracket, Wall mount	●			●		15.0	EA	



PAR Lampholders

3 SCHEDULED STOCK SHIPMENTS Regional Distribution Center Stock List

Part Number	Catalog Number	UPC Code	Description	CA 03	IL 06	PA 10	SC 07	TX 04	Wt. each	Ctn. Qty.	Price
101B	101-B	785988465750	Lampholder, Bronze, 150w max PAR 38, Wet location	●					1.0	EA	
103	103	785988202102	Lampholder, Natural aluminum, 150w max PAR 38, Wet location	●	●				1.0	EA	
103-7	103-7	785988202195	Lampholder, Gray, 150w max PAR 38, Wet location	●	●	●		●	1.3	EA	
10371	103-71	785988465767	Shielded lampholder, Bronze, 150w max PAR 38, Wet location	●					1.0	EA	
10372	103-72	785988202249	Shielded lampholder, Black, 150w max PAR 38, Wet location	●					1.0	EA	
10373	103-73	785988202270	Shielded lampholder, Shalda green, 150w max PAR 38, Wet location	●					1.0	EA	
10374	103-74	785988465774	Shielded lampholder, White, 150w max PAR 38, Wet location	●					1.0	EA	
306	306	785988204069	Lampholder, Gray, 300/500w PAR56 end prong lamp by others, Wet location				●		3.0	EA	
30813M	308-13-M	785988204588	Bullet lampholder, Shalda green, 150w max PAR 38, Damp location	●					3.0	EA	
30814M	308-14-M	785988204625	Bullet lampholder, Black, 150w max PAR38, Damp location	●					1.0	EA	
308M	308-M	785988204502	Lampholder, Gray, 175w max PAR 38, Damp location	●					3.0	EA	
308M51M	308-M51-M	785988204724	Lampholder, Bronze, 175w max PAR 38, Damp location	●					3.0	EA	

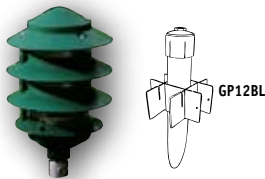


PAR Lampholders

35 SCHEDULED STOCK SHIPMENTS

Regional Distribution Center Stock List


Part Number	Catalog Number	UPC Code	Description	CA 03	IL 06	PA 10	SC 07	TX 04	Wt. each	Ctn. Qty.	Price
30913ML	309-13-ML	785988309139	Bullet lampholder, Shalda green, 175w max PAR/BR40, Univ. aiming	●			●	●	4.0	EA	
30914ML	309-14-ML	785988205110	Bullet lampholder, Black, 175w max PAR38/BR40, Univ. aiming	●			●		4.0	EA	
309M51ML	309-M51-ML	785988781010	Bullet Lpholder, Bronze, 175w max PAR38/BR40, Univ. aiming	●	●	●	●	●	3.0	EA	
309M54ML	309-M54-ML	785988465781	Bullet lampholder, White, 175w max PAR/BR40, Univ. aiming	●					3.0	EA	
309ML	309-ML	785988205004	Bullet lampholder, Gray, 175w max PAR38/BR40, Univ. aiming	●	●				3.0	EA	
309S	309-S	785988419203	Deep shield for 309 Series, Black, 7" long, 45° front	●					1.0	EA	
309VGML	309-VG-ML	785988204885	Bullet lampholder, Verdi, 175w PAR 38/BR40, Univ. aiming	●				●	2.0	EA	
PBT1	PBT-1	785988260119	Photo control, 120V, Button type	●	●	●	●	●	0.5	EA	
PBT234	PBT-234	785988260157	Photo control, 208/240/277V, Button type	●	●	●	●	●	0.5	EA	
S302	S-302	785988473854	Slip-fitter, Pole top, 1/2" Hub, 2 3/8" Slip fit ,Gray	●	●	●			1.0	EA	
S302M51	S-302-M51	785988473861	Slip-fitter, Pole top, 1/2" Hub, 2 3/8" Slip fit , Bronze			●			1.0	EA	



Louverlights- 120V

35 SCHEDULED STOCK SHIPMENTS

Regional Distribution Center Stock List

Part Number	Catalog Number	UPC Code	Description	CA 03	IL 06	PA 10	SC 07	TX 04	Wt. each	Ctn. Qty.	Price
583G	583-G	785988217656	Louver light, Shalda green, 60w max, 3 Tier, Polycarbonate	●					2.0	EA	
583MVG	583M-VG	785988217670	Louver light, Verdi green, 75w max, 3 Tier, Aluminum	●					2.0	EA	
587G	587-G	785988218172	Louver light, Shalda green, 40w max, 2 Tier, Polycarbonate	●					1.0	EA	
587MVG	587M-VG	785988218189	Louver light, Verdi green, 60w max, 2 Tier, Aluminum	●					1.5	EA	
GL3L13G	GL-3L13-G	 785988428601	Louver light, Shalda green, 13w CFL, 3 Tier, Polycarbonate, with Lamp	●					5.0	EA	
GP12BL	GP12BL	785988009817	Ground post, Non-metallic, Remove-able cap with 1/2" top hub, Stabilizer kit, Black	●					2.0	EA	



Fluorescent Landscape Flood Non-Metallic

35 SCHEDULED
STOCK
SHIPMENTS

Regional Distribution Center Stock List

Part Number	Catalog Number	UPC Code	Description	CA 03	IL 06	PA 10	SC 07	TX 04	Wt. each	Ctn. Qty.	Price
GLF13G	GL-F13-G	785988428458	Flood, Green, 13w CFL, 120V, Polycarbonate, Super seal, with Lamp	•					5.0	EA	



AFF Architectural Fluorescent Flood

QS₁₀

10-Day Quick Ship Ordering Guide

Order Limit Per Fixture Selection: 15

CATALOG NUMBER	WATTAGE	VOLTAGE	1/2" KNUCKLE	LENGTH	INITIAL LUMENS	AVERAGE LAMP LIFE	WEIGHT LBS. (KG)
AFF-32E-WL	32	120-277	Double	49"	2,850	20,000	18 (8.2)
AFF-64E-WL	64	120-277	Double	49"	5,700	20,000	22 (10)



RU Recessed Uplights

35 SCHEDULED
STOCK
SHIPMENTS

Regional Distribution Center Stock List

Part Number	Catalog Number	UPC Code	Description	CA 03	IL 06	PA 10	SC 07	TX 04	Wt. each	Ctn. Qty.	Price
RU100G	RU100G	785988015627	Guard, Non-metallic lens protection for RU100, Bronze	•					3.0	EA	
RU100P8	RU100P8	785988015603	Non-metallic recessed uplight, 100w PS, Quad-Tap, Bronze, with Lamp	•					14.5	EA	
RU100WW	RU100WW	785988015641	Lamp shield, Wall wash, Internal mount for RU100	•					1.0	EA	
RU70G	RU70G	785988015610	Guard, Non-metallic lens protection for RU70, Bronze	•					2.0	EA	
RU70P8	RU70P8	785988015597	Non-metallic recessed uplight, 70w PS, Quad-Tap, Bronze, with Lamp	•					10.0	EA	
RU70WW	RU70WW	785988015634	Lamp shield, Wall wash, Internal mount for RU70	•					1.0	EA	



12V LED Lightscaper® Fixtures



Regional Distribution Center Stock List

Part Number	Catalog Number	UPC Code	Description	CA 03	IL 06	PA 10	SC 07	TX 04	Wt. each	Ctn. Qty.	Price
CB150	CB-150	785988015931	150ft, #14 low energy cable, Soft jacket	•					6.0	EA	
CB75	CB-75	785988015924	75ft, #14 low energy cable, Soft jacket	•			•		4.0	EA	
COAB	CO-AB	785988015757	Cone, Antique bronze, 1.5w LED, 12V, Complete kit: Connector, spike & deck mounts, and 4ft fixture cable	•			•		2.0	EA	
COAG	CO-AG	785988015764	Cone, Antique green, 1.5w LED, 12V, Complete kit: Connector, spike & deck mounts, and 4ft fixture cable	•					2.0	EA	
ELAB	EL-AB	785988015870	Eyelid, Antique bronze, 1.5w LED, 12V, 6ft fixture cable & connector	•					1.0	EA	
ELPT	EL-PT	785988015887	Eyelid, Pewter, 1.5w LED, 12V, 6ft fixture cable & connector	•					1.0	EA	
FLAB	FL-AB	785988015900	Flood, Antique bronze, 3w LED, 12V, Complete kit: Connector, spike & deck mounts, and 4ft fixture cable	•			•		2.0	EA	
GNAB	GN-AB	785988015771	Greenville, Antique bronze, 1.5w LED, 12V, Complete kit: Connector, spike & deck mounts, and 4ft fixture cable	•					2.8	EA	
GNPT	GN-PT	785988015788	Greenville, Pewter, 1.5w LED, 12V, Complete kit: Connector, spike & deck mounts, and 4ft fixture cable	•					2.8	EA	
LVT56	LVT56	785988015917	Power center, 120-to-12V, 56w max, 3ft grounded cord set, Photocontrol and timer settings, Non-metallic housing	•			•		4.0	EA	
MSAB	MS-AB	785988015795	Mission, Antique bronze, 1.5w LED, 12V, Complete kit: Connector, spike & deck mounts, and 4ft fixture cable	•					3.3	EA	
MSAG	MS-AG	785988015801	Mission, Antique green, 1.5w LED, 12V, Complete kit: Connector, spike & deck mounts, and 4ft fixture cable	•					3.3	EA	
RDAB	RD-AB	785988015832	Reidville, Antique bronze, 1.5w LED, 12V, Complete kit: Connector, spike & deck mounts, and 4ft fixture cable	•					3.3	EA	
RDPT	RD-PT	785988015849	Reidville, Pewter, 1.5w LED, 12V, Complete kit: Connector, spike & deck mounts, and 4ft fixture cable	•					3.3	EA	
REPT	RE-PT	785988015894	Recessed uplight, Pewter, 3w LED, 12V, 4ft fixture cable & connector	•			•		1.5	EA	
SAAB	SA-AB	785988015818	Saturn, Antique bronze, 1.5w LED, 12V, Complete kit: Connector, spike & deck mounts, and 4ft fixture cable	•					2.8	EA	
SAPT	SA-PT	785988015825	Saturn, Pewter, 1.5w LED, 12V, Complete kit: Connector, spike & deck mounts, and 4ft fixture cable	•					2.8	EA	
SSAB	SS-AB	785988015856	Sea Shell, Antique bronze, Adjustable head, 1.5w LED, 12V, Complete kit: Connector, spike & deck mounts, and 4ft fixture cable	•					2.0	EA	
SSAG	SS-AG	785988015863	Sea Shell, Antique green, 1.5w LED, 12V, Complete kit: Connector, spike & deck mounts, and 4ft fixture cable, adjustable head	•					2.0	EA	



12V LED Lightscapers® Fixtures

Regional Distribution Center Stock List

Part Number	Catalog Number	UPC Code	Description	CA 03	IL 06	PA 10	SC 07	TX 04	Wt. each	Ctn. Qty.	Price
TLAB	TL-AB	785988015733	Tulip, Antique bronze, 1.5w LED, 12V, Complete kit: Connector, spike & deck mounts, and 4ft fixture cable	●					2.3	EA	
TLAG	TL-AG	785988015740	Tulip, Antique green, 1.5w LED, 12V, Complete kit: Connector, spike & deck mounts, and 4ft fixture cable	●					2.3	EA	



Motion Sensors/ Kits

Regional Distribution Center Stock List

Part Number	Catalog Number	UPC Code	Description	CA 03	IL 06	PA 10	SC 07	TX 04	Wt. each	Ctn. Qty.	Price
M2LH	M2LH	785988466429	Motion sensor kit, 120V, 300w max, 2 Lampholders, Cover, 130° sensor range, Bronze, Non-metallic	●	●		●		1.2	EA	
M2LHW	M2LH-W	785988466436	Motion sensor kit, 120V, 300w max, 2 Lampholders, Cover, 130° sensor range, White, non-metallic	●			●		1.2	EA	
MO	MO	785988466405	Motion sensor only, 500w, 120V, 130° sensor range, Bronze	●					0.7	EA	
MOW	MO-W	785988466412	Motion sensor only, 500w, 120V, 130° sensor range, White NEW!	●					1.0	EA	
S2LH	S2LH	785988465798	Motion sensor kit, 120V, 300w max, 2 Lampholders, Cover, 270° sensor range, Bronze	●			●		2.0	EA	
S2LHW	S2LH-W	785988704590	Motion sensor kit, 120V, 300w max, 2 Lampholders, Cover, 270° sensor range, White	●	●		●		2.0	EA	
SO	SO	785988465804	Motion sensor only, 500w, 120V, 270° sensor range, Bronze	●			●		1.5	EA	
SOW	SO-W	785988466306	Motion sensor only, 500w, 120V, 270° sensor range, White	●	●				1.5	EA	



Decorative Quartz Motion Sensors/ Kits

Regional Distribution Center Stock List

Part Number	Catalog Number	UPC Code	Description	CA 03	IL 06	PA 10	SC 07	TX 04	Wt. each	Ctn. Qty.	Price
R2LHQ	R2LH-Q	785988012039	Decorative motion sensor kit, 2x75w quartz, Lamps included, 130° detection range, Bronze	●			●		1.5	EA	
R2LHQW	R2LH-Q-W	785988015658	Decorative motion sensor kit, 2x75w quartz, Lamps included, 130° detection range, White	●			●		1.5	EA	