

TD300
IN-WALL DIGITAL
INTERVAL TIMER

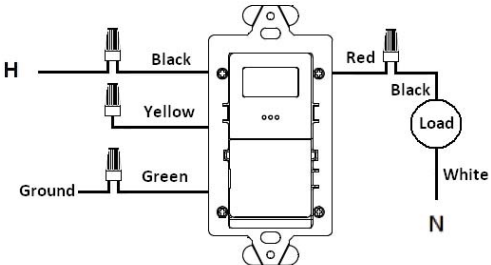
ONE YEAR LIMITED WARRANTY: If this product fails because of a manufacturing defect within one year after purchase, we will, at our option, either repair or replace it at no charge. Our warranty does not cover damage caused by accident, abuse or misuse. We assume no further liability with respect to the sale or use of this product. THIS WARRANTY IS IN LIEU OF ALL OTHER WARRANTIES, EXPRESSED OR IMPLIED, INCLUDING THE WARRANTY OF MERCHANTABILITY. We make no warranty with respect to the fitness of any goods for the users particular application. This warranty gives you specific legal rights, and you also may have other rights which vary from state to state.

It is our intent to provide accurate and current specification information. However, in the interest of product improvement, HBA may alter the specifications or constructional details without prior notice.

INSTALLATION INSTRUCTIONS

WIRING FOR TD300 Series

1. Turn power off at the electrical panel.
2. Connect the timer black wire to line. Connect the timer red wire to the load. Cap unused yellow wire.
3. Connect the green wire to the ground. Unit must be properly grounded to operate.
4. Mount the timer inside electrical box using 2 mounting screws provided.
5. Turn power on at the electrical panel.
6. Timer dip switches are factory preset for 2 hour operation. Change dip switches and program only if custom setting is desired. Follow SET-UP INSTRUCTIONS.
7. Close timer cover and install wall plate. Settings are now tamper resistant.
8. Remove wall plate to open timer cover and change settings.

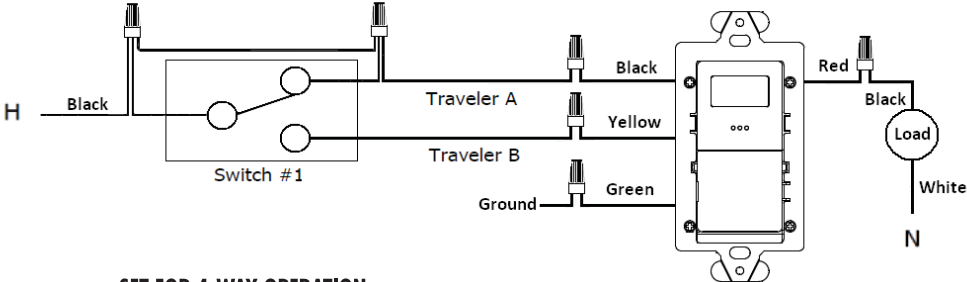


RETROFITTING A TD300 TO EXISTING 3-WAY OR 4-WAY SWITCH

1. Turn power off at the electrical panel.
 2. Disconnect the second 3-way switch.
 3. Connect the timer red wire to the load. Connect the timer black wire to “Traveler A” and the timer yellow wire to “Traveler B”. Connect the green wire to the ground. Unit must be properly grounded to operate.
 4. Mount the timer inside electrical box using two mounting screws provided.
 - 5a. (3-way switch wiring **Figure 1**): At switch #1 connect a wire between the hot leg of the 3-way and “Traveler A” inside of that switch’s gang-box.
 - 5b. (4-way switch wiring **Figure 2**): Replace wall switches with a properly rated momentary switch. At switch #1, connect “Traveler A” to hot leg and one side of momentary switch. Connect “Traveler B” to other side of momentary switch. At switch #2, connect “Traveler A” together and to one side of momentary switch. Connect “Traveler B” together and to other side of momentary switch.
 6. Turn power on at the electrical panel.
 7. Timer dip switches are factory preset for 2 hour operation. Change dip switches and program only if custom setting is desired. Follow SET-UP INSTRUCTIONS.
 8. Close timer cover and install wall plate. Settings are now tamper resistant.
 9. Remove wall plate to open timer cover and change settings.
- Note: Maximum 100ft wire length from the 3-way (multi-way) switch to timer.

Figure 1

Connect a wire inside the gang-box
between Traveler A and HOT

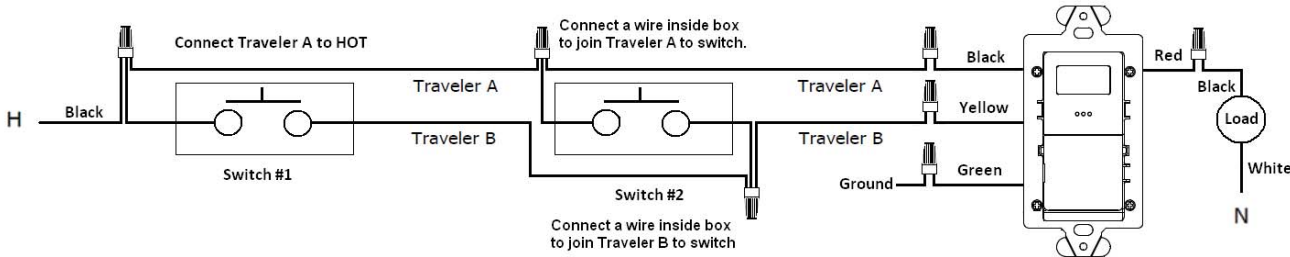


SET FOR 4-WAY OPERATION

The TD300 timers are factory preset for 3-way wiring with a maintained wall switch. Optional 4-way (multi-way): Open timer door and press reset button. Unit will display 3-W representing 3-way. Press the TIMER button to change screen to 4-W. After 10 seconds the display will blink twice. Display will confirm operating hertz (60 typical). Unit now ready to program. Momentary switches must be used as additional switch positions in the 4-way (multi-way) setting. Refer to wiring diagrams.

Figure 2

Use mometary switches at all additional locations.



SET-UP INSTRUCTIONS FOR THE TD300 SERIES

When powering up for the first time, allow 1 minute for unit to show OFF on screen. If the screen in blank after 1 minute, press RESET button, see **Figure 3**.

Default Set 2 hours

The TD300 timers are factory preset to meet newer energy code override mandates. No adjustment is required. This setting will provide a two hour maximum operating time before shut off. The scroll feature is active to allow the user to change the operating time with the maximum time setting at two hours.

DIP SWITCHES					
1 4 HOUR	2 2 HOUR	3 LIMIT	4 SCROLL	5 BEEPER	6 BLINK
OFF	ON	OFF	ON	OFF	OFF

Close the timer door and unit is ready. One press of the bottom cover turns the load ON and load will stay ON until a countdown to the preset off time. Pressing the bottom cover again will turn load OFF.

SET FOR OTHER THAN FACTORY DEFAULT OPERATION

Figure 3

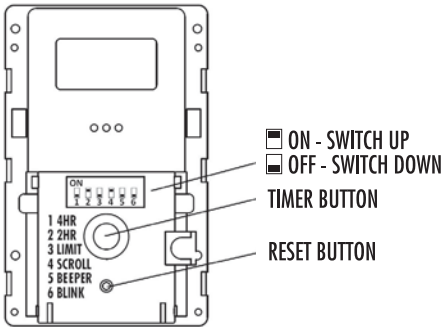



Figure 4



“” = Beeper

“BLINK” = Blink

1. **4HR**: Set ON for preset 4 hour maximum countdown when 2HR is set to OFF. Also used in custom time programming.
2. **2HR**: Set ON for preset 2 hour maximum countdown when 4HR is set to OFF. Also used in custom time programming.
3. **LIMIT**: Used with programming sequence. Switch from ON to OFF to limit scroll to match custom time.
4. **SCROLL**: Set ON allows timer to scroll to a shorter run time. Set OFF to disable. Also used in programming sequence. Switch from ON to OFF to set a custom time. The time scrolls in steps:
5 minute steps from 5 minutes to 1 hour.
10 minute steps from 1 to 4 hours.
30 minute steps from 4 hours to 12 hours.
1 hour steps from 12 to 24 hours.
5. **BEEPER**: Set ON activates feature for beep warning every 15 seconds starting at 2 minutes before OFF. See **Figure 4**.
6. **BLINK**: Set ON activates feature for load flash 2 minutes before OFF. See **Figure 4**.

SET FOR 4 HOUR

Change the dip switch settings, as shown below, to provide four hour maximum operating time before shut off as allowed by some energy codes. The scroll feature is active to allow the user to change the operating time with the maximum time setting at four hours.

DIP SWITCHES						
1 4 HOUR	2 2 HOUR	3 LIMIT	4 SCROLL	5 BEEPER	6 BLINK	
OFF	ON	OFF	ON	OFF	OFF	Factory Default Settings
ON	OFF	OFF	ON	OFF	OFF	Set DIP Switches as shown

ACTIVATING WARNING FEATURES

The TD300 series provides for a warning 2 minutes before shutting load off. The optional audible warning beeps every 15 seconds for the 2 minute warning period. The optional blink warning will turn off the load for 1 second at 2 minutes before shut off.

DIP SWITCHES						
1 4 HOUR	2 2 HOUR	3 LIMIT	4 SCROLL	5 BEEPER	6 BLINK	
OFF	ON	OFF	ON	OFF	OFF	Factory Default Settings
OFF	ON	OFF	ON	OFF	ON	Set BLINK to ON

To activate one or both, change the switch matching the feature to the ON position. An icon will confirm these features are active. See **Figure 4**.

SET A CUSTOM TIME (SOMETHING OTHER THAN 2 OR 4 HOURS)

The TD300 series may be programed to a custom length of time for countdown. The time can range between 5 minutes and 24 hours. The scroll feature is active to allow the user to change the operating time up to the custom time setting.

DIP SWITCHES						
1 4 HOUR	2 2 HOUR	3 LIMIT	4 SCROLL	5 BEEPER	6 BLINK	
OFF	ON	OFF	ON	OFF	OFF	Factory Default Setting
ON	ON	ON	ON	OFF	OFF	1. Set DIP SWITCHES as shown 2a. Press and release TIMER button 2b. Wait for screen to show count-down. 2c. Press and hold TIMER button. 2d. Release button when desired time shows
ON	ON	OFF	OFF	OFF	OFF	3. Set LIMIT and SCROLL switch to OFF
ON	ON	OFF	ON	OFF	OFF	4. Set SCROLL switch to ON

SET A CUSTOM TIME AND ALLOW SCROLL UP TO 24 HOURS.

The TD300 series may be programed to a custom length of time for countdown. The scroll feature is active to allow the user to change the operating time up to the maximum time setting of 24 hours.

DIP SWITCHES						
1 4 HOUR	2 2 HOUR	3 LIMIT	4 SCROLL	5 BEEPER	6 BLINK	
OFF	ON	OFF	ON	OFF	OFF	Factory Default Setting
OFF	OFF	OFF	ON	OFF	OFF	1. Set DIP SWITCHES as shown 2a. Press and release TIMER button 2b. Wait for screen to show countdown. 2c. Press and hold TIMER button. 2d. Release button when desired time shows
OFF	OFF	OFF	OFF	OFF	OFF	3. Set SCROLL switch to OFF
OFF	OFF	OFF	ON	OFF	OFF	4. Set SCROLL switch to ON

OPERATIONS

Once set-up is complete, attach the supplied decorator-type wallplate to the unit. The bottom cover becomes the switch to control the timer operations. Press the bottom cover once. Timer goes to preset time, turns load ON, and starts countdown interval to automatic OFF. Pressing the bottom cover again will turn load OFF. If the SCROLL feature is active, press and hold the main bottom cover and timing will change. Release when the desired time is shown.

In the OFF mode, LCD screen scrolls timer interval message every 15 seconds (SEt - For - HH:MM - LOAD - OFF). Example of 3 hour default message: SEt - For - 02:00 - LOAD - OFF.



Hubbell
Building Automation

9601 Dessau Road | Austin, Texas 78754 | USA
HBA Technical Services (888) 888-8006