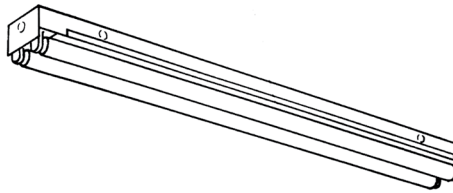


PHILIPS Day-Brite CFI

Linear

T standard strip

2', 3', 4', or 8', T8



Project: _____
 Location: _____
 Cat.No: _____
 Type: _____
 Lamps: _____ Qty: _____
 Notes: _____

The Philips Day-Brite / Philips CFI T standard strip is a basic strip luminaire available in multiple lamp and reflector types.

Ordering guide

Example: T232-UNV-1/2-EB

Family	No. of Lamps per Cross Section	Lamp Type	Voltage	Options
<input type="text" value="T"/>	<input type="text" value=""/>	<input type="text" value=""/> --	<input type="text" value=""/> --	<input type="text" value=""/>
T Standard Strip	(not included) 1	17 17WT8 (24") 25 25WT8 (36")	UNV Universal voltage 120/277V	1/1 One 1-lamp ballast 1/2 One 2-lamp ballast 1/4 One 4-lamp ballast
TT Tandem "T" Series (32W only)	2	32 32WT8 (48")	120 120V 277 277V 347 347V	2/2 Two 2-lamp ballasts EB Electronic ballast, <10% THD EB1OR Electronic ballast, program rapid start, <10% THD EBHE Electronic ballast, high efficiency, std. ballast factor EBLHE Electronic ballast, high efficiency, low ballast factor EBHHE Electronic ballast, high efficiency, high ballast factor

Accessories (order separately)

- CG-2 2' wire guard for strip w/out reflector
- CG-3 3' wire guard for strip w/out reflector
- CG-4 4' wire guard for strip w/out reflector (use 2 for 8')
- C-173 4' wire guard for strip w/symmetrical reflector (use 2 for 8')
- CS-400 Rigid canopy
- CS-500 42" top swivel canopy
- CS-12 12" Stem
- CS-18 18" Stem
- CS-24 24" Stem
- CS-30 30" Stem
- CS-36 36" Stem
- CS-48 48" Stem
- CTBH-1 T-bar sliding hanger, flush mounting
- CTBH-2 T-bar sliding hanger, 1-1/2" spacing
- FKR-126 Chain hanger set
- TH-1 Sliding hanger, flush mounting
- TH-2 Sliding hanger, 1-1/2" spacing
- TC-1 Heavy duty coupler
- TSR-2 2' white steel symmetric reflector
- TSR-3 3' white steel symmetric reflector
- TSR-4 4' white steel symmetric reflector (use 2 for 8')
- TSS-2 2' specular symmetric reflector
- TSS-3 3' specular symmetric reflector
- TSS-4 4' specular symmetric reflector (use 2 for 8')
- TAR-2 2' white steel asymmetric reflector
- TAR-3 3' white steel asymmetric reflector
- TAR-4 4' white steel asymmetric reflector (use 2 for 8')
- TAS-2 2' specular asymmetric reflector
- TAS-3 3' specular asymmetric reflector
- TAS-4 4' specular asymmetric reflector (use 2 for 8')
- TDR-2 2' white steel directional reflector
- TDR-3 3' white steel directional reflector
- TDR-4 4' white steel directional reflector (use 2 for 8')
- TDS-2 2' specular directional reflector
- TDS-3 3' specular directional reflector
- TDS-4 4' specular directional reflector (use 2 for 8')

Power Connect modular wiring available, see sheet 1604-OA for details



T Standard strip

2', 3', 4', or 8', T8

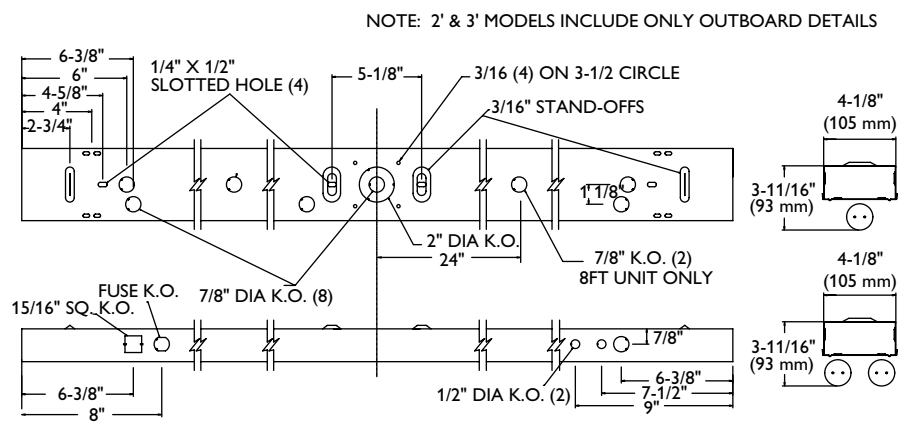
Construction/Finish

- Luminaires suitable for unit, row, surface, or suspension mounting.
- Multiple knockouts for convenient installation.
- Heavy duty channel of code gauge die formed steel.
- High reflectance white baked enamel finish.
- Quarter turn latch secures channel cover for easy wireway access.

Electrical

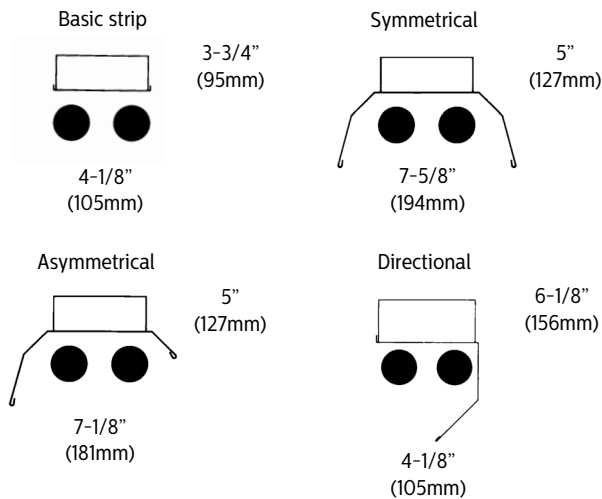
- cULus listed for direct mounting on low density ceilings and damp locations.
- Self-contained fluorescent emergency power packs can be incorporated.
- Green grounding screw installed in channel.
- Lampholders may be individually replaced or rewired.

Dimensions



DIM "A"	Inches	(mm)
2' CHANNEL	24"	(610 mm)
3' CHANNEL	36"	(914 mm)
4' CHANNEL	48"	(1219 mm)
8' CHANNEL	96"	(2438 mm)

NOTES:
1) 2" K.O. In center of channel is not present in 2' or 3' channel.



Catalog Numbers (Reflectors only)		
Symmetrical	Asymmetrical	Directional
Steel	Steel	Steel
2' TSR-2	2' TAR-2	2' TDR-2
3' TSR-3	3' TAR-3	3' TDR-3
4' TSR-4	4' TAR-4	4' TDR-4
Silverado*	Silverado*	Silverado*
2' TSS-2	2' TAS-2	2' TDS-2
3' TSS-3	3' TAS-3	3' TDS-3
4' TSS-4	4' TAS-4	4' TDS-4

*Silverado reflectors are made from a high reflectance (95%) specular material. The specular finish provides more precise light control. Order strips separately.
Order two 4' reflectors for 8' strips.

T Standard strip

2', 3', 4', or 8', T8

Photometry

T Strip, 4' 2 Lamp 32W T8

Efficiency – 93.3%

LER – FS-78

TER – 41

		Candlepower				Light Distribution				Average Luminance								
		Angle	End	45	Cross	Degrees	Lumens	% Lamp	% Luminaire	Angle	End	45'	Cross					
Catalog No.	T232-1/2-EB	0	1019	1019	1019	0-30	839	14.5	15.5	45	6257	6389	6686					
Test No.	14719	5	1015	1018	1019	0-40	1429	24.6	26.4	55	5693	6243	6738					
S/MH	1.6	15	976	1009	1034	0-60	2793	48.1	51.6	65	4843	6152	7171					
Lamp Type	F32T8	25	901	990	1059	0-90	4316	74.4	79.8	75	3551	6404	6627					
Lumens/Lamp	2900	35	793	958	1059	90-180	1094	18.9	20.2	85	1448	4423	5003					
Ballast Factor	.88	45	656	898	1019	0-180	5410	93.3	100.0									
Input Watts	61	55	494	800	956	Coefficients of Utilization												
Comparative yearly lighting energy cost per 1000 lumens – \$3.08 based on 3000 hrs. and \$.08 pwr KWH. The photometric results were obtained in the Philips Day-Brite laboratory which is NVLAP accredited by the National Institute of Standards and Technology.		65	320	688	911	EFFECTIVE FLOOR CAVITY REFLECTANCE 20 PER (pfc=0.20)												
		75	154	590	718	pcc	80				70				50			
		85	28	308	432	pw	70	50	30	70	50	30	50	30				
		95	2	325	452	RCR												
		105	3	305	512	0	107	107	107	102	102	102	93	93				
		115	2	230	379	1	94	89	83	90	84	81	78	73				
		125	2	160	334	2	84	76	68	80	72	66	66	60				
		135	6	104	236	3	77	66	56	71	63	55	56	51				
		145	6	46	133	4	69	56	48	66	55	46	50	42				
		155	7	5	42	5	64	51	41	59	48	40	44	36				
		165	8	6	6	6	57	45	36	55	42	34	40	33				
		175	9	5	6	7	54	40	32	51	39	30	35	28				
						8	50	36	28	46	35	28	33	26				
						9	46	34	26	44	32	25	29	23				
						10	44	30	23	40	29	23	28	20				



Some luminaires use fluorescent or high intensity discharge (HID) lamps that contain small amounts of mercury. Such lamps are labeled, "Contain Mercury" and/or the symbol "HG". Lamps that contain mercury must be disposed of in accordance with local requirements. Information regarding lamp recycling and disposal can be found at www.lamprecycle.org

© 2016 Philips Lighting Holding B.V. All rights reserved. Philips reserves the right to make changes in specifications and/or to discontinue any product at any time without notice or obligation and will not be liable for any consequences resulting from the use of this publication. philips.com/luminaires



Philips Lighting North America Corporation
200 Franklin Square Drive, Somerset, NJ 08873
Tel. 855-486-2216

Philips Lighting Canada Ltd.
281 Hillmount Rd, Markham, ON, Canada L6C 2S3
Tel. 800-668-9008