

Factory-sealed

Applications:

Type TCH electric clocks are used:

- In oil refinery control rooms, hospital operating rooms, chemical plants, grain handling and processing plants and other similar locations where specific hazardous atmospheres may exist

Features:

- Sheet steel case may be used where environmental conditions are not severe; electric motor and connections are contained in corrosion-resistant enclosure; dials are 13" in diameter; reset knob protrudes from bottom of case
- Disassembly for installation and maintenance is easily performed; the motor housing is factory-sealed, with no external seals required

Certifications and Compliances:

- NEC:
 - Class I, Division 1 & 2, Groups C, D
 - Class II, Division 1, Groups E, F, G
 - Class II, Division 2, Groups F, G
 - Class III
- UL Standard: 1203

Standard Materials:

- Clock body and cover – sheet steel
- Motor housing – copper-free aluminum

Standard Finishes:

- Aluminum – aluminum acrylic paint
- Sheet steel – baked aluminum enamel

Size Ranges:

- Hubs – 1" through-feed

Electrical Rating Ranges:

- 110VAC, 60 hertz
- Self-starting synchronous motor – 3 watts

Options:

The following special options are available:

Description **Suffix**
 Sheet metal band notched for conduit, can be supplied for enclosing gap between wall surface and back of case **See listings**

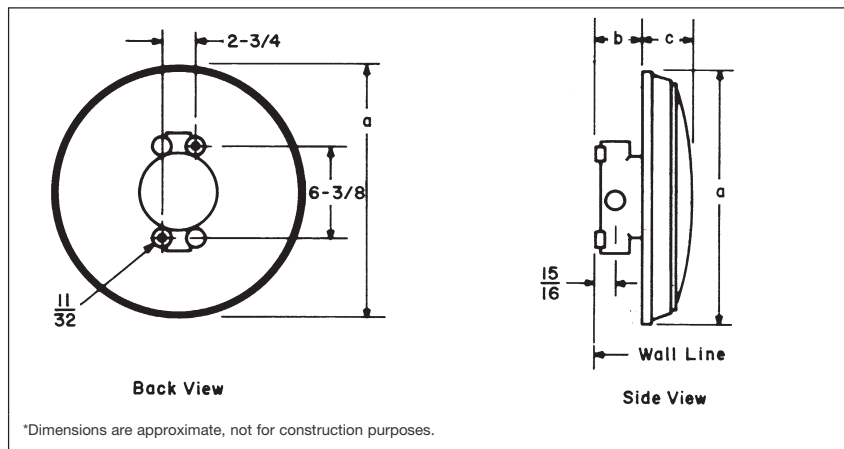


Sheet Steel Case

Ordering Information:

Enclosure with Clock Motor	Hub Size	Style	Cat. #	Enclosing Sheet Metal Band Cat. #
110 VAC 60 hertz Self-Starting Synchronous (3 Watts)	1"	With Sheet Steel Case Surface Mount	TCH2220	TCH202

Dimensions* In Inches:



*Dimensions are approximate, not for construction purposes.

Cat. #	a	b	c
TCH2220	17	2 7/8	3 7/16