

Stainless Steel Fittings

Locknuts & Bushings

Stainless steel fittings deliver unbeatable corrosion protection where you need it, saving you time and money throughout the life of your facility.

Superior resistance to corrosion and heat, combined with unmatched strength, make stainless steel fittings a long-term solution for even the most extreme environments.

Features:

- Self-healing properties of stainless steel fittings help reduce the penetration of rust/corrosion and eliminate damage to the fitting
- Stainless steel fittings retain their strength in extreme heat and extreme cold conditions
- Fitting surface is easy to maintain and keep clean
- Easy cleaning capabilities make these fittings perfect for food processing and other hygienic areas where wash downs are common
- Superior strength and durability greatly reduce replacement of fittings – this will lower your total cost of ownership and increase your return on investment
- Stainless steel fittings do not require harsh environment-damaging cleaners to keep them looking like new
- Stainless steel fittings are ideal for industrial MRO and OEM applications in food and beverage, pharmaceutical, petrochemical, wastewater, salt water and other corrosive environments

Standard Materials:

- Fittings – 316 stainless steel
- Conduit, nipples, couplings and elbows – 316 stainless steel, 304 stainless steel
- Conduit hangers – 316 stainless steel, 301 stainless steel

LOCKNUTS



11SS

Features:

- 316 stainless steel locknuts can be used with conduit or NPS threaded pipe
- Precision machined threads allow for easy installation
- Heavy stock thickness and specially designed tabs tighten securely and will not easily loosen even in the most severe applications

Cat. #	Size	Unit Qty.	Std. Pkg.	Wt. Lbs. Per 100	Threads Per Inch
11SS	1/2"	1000	1000	2	14
12SS	3/4"	500	500	3	14
13SS	1"	500	500	5	11 1/2
14SS	1 1/4"	100	100	7	11 1/2
15SS	1 1/2"	100	100	10	11 1/2
16SST	2"	100	100	21	11 1/2



HEX HEAD REDUCING BUSHINGS



RBSS21

Cat. #	Size	Unit Qty.	Std. Pkg.	Wt. Lbs. Per 100	Length	Hex Nut Size
RBSS21	3/4" - 1/2"	100	100	15	0.95	1.20
RBSS31	1" - 1/2"	100	100	21	1.07	1.40
RBSS32	1" - 3/4"	100	100	17	1.07	1.40
RBSS51	1 1/2" - 1/2"	50	50	70	1.50	2.05
RBSS52	1 1/2" - 3/4"	50	50	68	1.50	2.05
RBSS53	1 1/2" - 1"	50	50	61	1.50	2.05
RBSS61	2" - 1/2"	25	25	81	1.30	2.42
RBSS62	2" - 3/4"	25	25	81	1.42	2.50
RBSS63	2" - 1"	25	25	81	1.32	2.43
RBSS65	2" - 1 1/2"	25	25	68	1.42	2.50

Stainless Steel

Stainless Steel Fittings

Plugs, Clamps & U-bolts

HEX HEAD PLUGS

Features:

- Used for closing threaded conduit hubs or openings
- NPT threads



PLG50SS

Cat. #	Size	Unit Qty.	Std. Pkg.	Wt. Lbs. Per 100	Length	Hex Nut Size
PLG50SS	1/2"	100	100	11	1.00	0.93
PLG75SS	3/4"	100	100	16	1.03	1.17
PLG100SS	1"	100	100	25	1.16	1.51
PLG150SS	1 1/2"	50	50	58	1.62	2.10
PLG200SS	2"	50	50	100	1.56	2.60

RECESSED HEX HEAD PLUGS

Features:

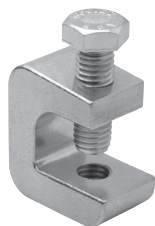
- Used for closing threaded conduit hubs or openings
- NPT threads



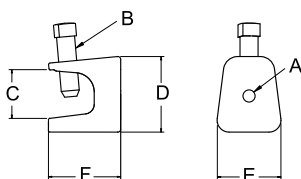
PLG2SS

Cat. #	Size	Unit Qty.	Std. Pkg.	Wt. Lbs. Per 100	Length
PLG1SS	1/2"	50	50	6	0.84
PLG2SS	3/4"	50	50	10	1.05
PLG3SS	1"	25	25	21	1.32
PLG4SS	1 1/4"	25	25	35	1.67
PLG5SS	1 1/2"	10	10	44	1.91
PLG6SS	2"	10	10	84	2.38

BEAM CLAMPS



531SST



Features:

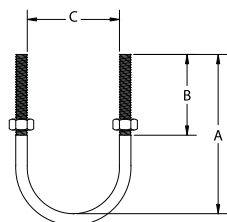
- This heavy duty "electrician's" style beam clamp is cast in stainless for superior strength and corrosion resistance
- Designed for use on I-beams, channels and other structural members, this beam clamp provides firm fixturing without drilling holes
- Attachment holes in the back and bottom permit a wide variety of applications

Cat. #	Size	Unit Qty.	Std. Pkg.	Wt. Lbs. Per 100	A	B	C	D	E	F
531SST	1 5/16"	50	50	25	1/4" - 20	5/16" - 18	7/8"	1 3/8"	1"	1 5/16"
533SST	2"	25	25	80	3/8" - 16	1/2" - 13	1 3/16"	1 7/8"	1 7/8"	2"
534SST	2 1/4"	25	25	148	1/2" - 13	5/8" - 11	1 5/16"	2 3/16"	2 5/8"	2 1/4"

U-BOLTS



UBM50SS

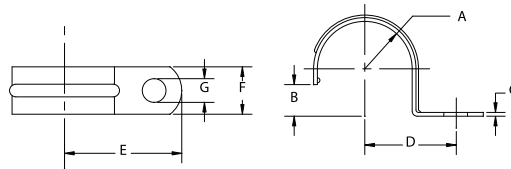


Cat. #	Size	Unit Qty.	Std. Pkg.	Wt. Lbs. Per 100	A	B	C	Size & Pitch	Load Rating (Lbs.)
UBM50SS	1/2"	100	100	13	2.41"	1.50"	0.94"	5/16" - 18	950
UBM75SS	3/4"	100	100	14	2.73"	1.50"	1.15"	5/16" - 18	950
UBM100SS	1"	100	100	15	3.04"	1.50"	1.41"	5/16" - 18	950
UBM125SS	1 1/4"	50	50	16	3.16"	1.50"	1.76"	5/16" - 18	950
UBM150SS	1 1/2"	50	50	18	3.48"	1.50"	2.00"	5/16" - 18	950
UBM200SS	2"	50	50	30	4.30"	1.75"	2.49"	3/8" - 16	1250
UBM250SS	2 1/2"	50	50	34	4.80"	1.75"	2.99"	3/8" - 16	1250
UBM300SS	3"	50	50	38	5.36"	1.75"	3.61"	3/8" - 16	1250
UBM350SS	3 1/2"	50	50	40	5.80"	1.75"	4.11"	3/8" - 16	1250
UBM400SS	4"	50	50	45	6.50"	1.75"	4.61"	3/8" - 16	1250

Stainless Steel Fittings

Straps

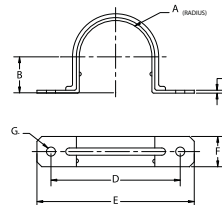
ONE HOLE STRAPS



410SS

Cat. #	Size	Unit Qty.	Std. Pkg.	Wt. Lbs. Per 100	A	B	C	D	E	F	G
410SS	1/2"	400	400	4	0.420"	0.390"	0.075"	0.937"	1.375"	0.625"	0.250"
411SS	3/4"	200	200	5	0.525"	0.500"	0.090"	1.031"	1.562"	0.750"	0.250"
412SS	1"	100	100	7	0.655"	0.620"	0.090"	1.125"	1.812"	0.875"	0.312"
413SS	1 1/4"	50	50	10	0.830"	0.800"	0.100"	1.500"	2.000"	0.875"	0.375"
414SS	1 1/2"	50	50	14	0.950"	0.920"	0.125"	1.875"	2.500"	1.000"	0.437"
415SS	2"	25	25	20	1.185"	1.150"	0.125"	2.125"	2.750"	1.125"	0.562"
206SS	2 1/2"	25	25	42	1.437"	1.400"	0.150"	2.562"	3.312"	1.250"	0.562"
207SS	3"	10	10	51	1.750"	1.700"	0.150"	2.875"	3.625"	1.250"	0.562"
208SS	3 1/2"	10	10	70	2.000"	1.950"	0.180"	3.250"	4.000"	1.250"	0.562"
209SS	4"	10	10	78	2.250"	2.200"	0.180"	3.500"	4.250"	1.250"	0.562"

TWO HOLE STRAPS



496 2SS

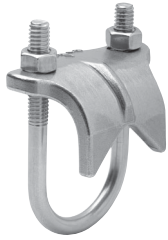
Cat. #	Size	Unit Qty.	Std. Pkg.	Wt. Lbs. Per 100	A	B	C	D	E	F	G
496 2SS	3/8"	400	400	2	0.350"	0.320"	0.024 - 0.030"	1.560"	2.000"	0.500"	0.188"
496 3SS	1/2"	200	200	2	0.420"	0.390"	0.024 - 0.030"	1.780"	2.250"	0.560"	0.188"
496 4SS	3/4"	200	200	3	0.520"	0.500"	0.024 - 0.030"	2.180"	2.620"	0.620"	0.188"
496 5SS	1"	100	100	4	0.650"	0.620"	0.033 - 0.038"	2.530"	3.200"	0.750"	0.250"
496 6SS	1 1/4"	50	50	6	0.830"	0.800"	0.033 - 0.038"	3.160"	4.000"	0.870"	0.250"
496 7SS	1 1/2"	50	50	9	0.950"	0.920"	0.043 - 0.050"	3.370"	4.200"	0.930"	0.250"
496 8SS	2"	50	50	12	1.180"	1.150"	0.043 - 0.050"	4.250"	5.120"	1.000"	0.375"
496 9SS	2 1/2"	25	25	16	1.430"	1.400"	0.053 - 0.060"	4.950"	5.870"	1.000"	0.375"
496 10SS	3"	25	25	20	1.750"	1.700"	0.053 - 0.060"	5.500"	6.500"	1.000"	0.375"
496 11SS	3 1/2"	25	25	29	2.000"	1.950"	0.068 - 0.075"	6.180"	7.120"	1.000"	0.437"
496 12SS	4"	25	25	32	2.250"	2.200"	0.068 - 0.075"	6.810"	7.750"	1.000"	0.437"

Stainless Steel

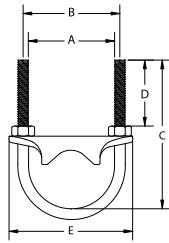
Stainless Steel Fittings

Clamps

RIGHT ANGLE CLAMPS



RAC50SS

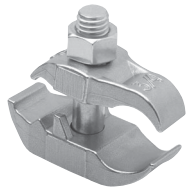


Features:

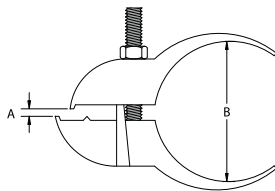
- Designed to fit pipe/rigid conduit as well as PVC coated rigid conduit, right angle clamps firmly fix pipe to the flange of a structural member without drilling holes
- Cast in CF8M (316) with 316 stainless steel U-bolt and nuts, these clamps are designed for both strength and corrosion resistance

Cat. #	Size	Unit Qty.	Std. Pkg.	Wt. Lbs. Per 100	A	B	C	D	E
RAC50SS	1/2"	50	50	34	0.94"	1.25"	2.41"	1.50"	2.00"
RAC75SS	3/4"	50	50	36	1.15"	1.46"	2.73"	1.50"	2.13"
RAC100SS	1"	50	50	44	1.41"	1.72"	3.04"	1.50"	2.63"
RAC125SS	1 1/4"	25	25	51	1.76"	2.07"	3.16"	1.50"	2.88"
RAC150SS	1 1/2"	25	25	61	2.00"	2.31"	3.48"	1.50"	3.37"
RAC200SS	2"	25	25	97	2.49"	2.87"	4.30"	1.75"	4.62"
RAC250SS	2 1/2"	25	25	125	2.99"	3.37"	4.80"	1.75"	4.62"
RAC300SS	3"	10	10	148	3.61"	3.99"	5.36"	1.75"	5.27"
RAC350SS	3 1/2"	10	10	163	4.11"	4.49"	5.80"	1.75"	5.75"
RAC400SS	4"	10	10	178	4.61"	4.99"	6.50"	1.75"	6.25"

PARALLEL CLAMPS



PARC75SS



Features:

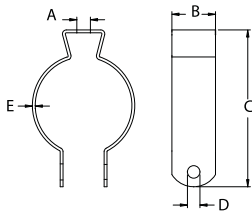
- Used to run pipe or conduit along the flange of I-beams or channels simply and easily without drilling holes
- The 100% stainless (CF8M and 316 stainless steel) design offers superb corrosion resistance and strength
- These clamps will fit both rigid conduit and PVC coated rigid conduit and are available in 3/4" and 1" trade sizes

Cat. #	Size	Unit Qty.	Std. Pkg.	Wt. Lbs. Per 100	A	B	Overall Width
PARC75SS	3/4"	50	50	58	2.89"	1.38"	1.1
PARC100SS	1"	50	50	60	3.12"	1.38"	1.1

CONDUIT HANGERS



0BSS316



316 Stainless Steel

Cat. #	Size	Unit Qty.	Std. Pkg.	Wt. Lbs. Per 100	A	B	C	D	E
0BSS316	1/2"	100	100	7	0.255"	0.750"	1.900"	0.275"	0.050"
1BSS316	3/4"	100	100	9	0.255"	0.875"	2.100"	0.275"	0.050"
2BSS316	1"	100	100	10	0.255"	0.875"	2.400"	0.275"	0.060"
3BSS316	1 1/4"	50	50	11	0.255"	0.875"	2.800"	0.275"	0.060"
4BSS316	1 1/2"	50	50	18	0.320"	1.000"	3.250"	0.275"	0.060"
5BSS316	2"	25	25	26	0.320"	1.250"	3.750"	0.275"	0.060"
6BSS316	2 1/2"	10	10	33	0.375"	1.125"	4.630"	0.313"	0.075"
7BSS316	3"	10	10	40	0.375"	1.187"	5.500"	0.313"	0.075"
9BSS316	4"	10	10	49	0.375"	1.250"	6.250"	0.313"	0.075"

301 Stainless Steel

With Bolt



1BSS



Cat. #	Description	Unit Qty.	Wt. Lbs. Per 100
0BSS	3/8 and 1/2 RGD 1/2 EMT Hanger with Bolt	100	6
1BSS	3/4 RGD 3/4 EMT Hanger with Bolt	100	7
2BSS	1 RGD 1 EMT Hanger with Bolt	100	11
2 1/2 BSS	1 1/4 EMT Hanger with Bolt	100	10
3BSS	1 1/4 RGD 1 1/2 EMT Hanger with Bolt	100	13
4BSS	1 1/2 RGD Hanger with Bolt	100	16
5BSS	2 RGD 2 EMT Hanger with Bolt	50	17
6BSS	2 1/2 RGD 2 1/2 EMT Hanger with Bolt	50	32
7BSS	3 RGD 3 EMT Hanger with Bolt	25	39
8BSS	3 1/2 RGD 3 1/2 EMT Hanger with Bolt	10	41
9BSS	4 RGD 4 EMT Hanger with Bolt	10	44

Stainless Steel Fittings

Elbows

CONDUIT

UL File No. E-324286



RCOND50 304SS

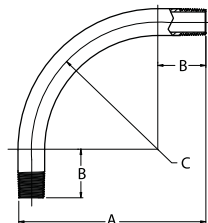


Features:

- Stainless steel threaded conduit polished to a bright finish to further increase corrosion resistance and provide enhanced aesthetic appearance
- Provided in 10' lengths with coupling attached and color-coded thread protector for the opposite end
- Custom sizes are also available

Cat. #	Size	Unit Qty.	Std. Pkg.	Wt. Lbs. Per 100	Threads	ID	OD	Wall Thickness	Length without Coupling	Est. Wt. Per Foot (Lbs.)
RCOND50 304SS	1/2"	1	1	85	14"	0.622"	0.840"	0.104"	9' 11 1/4"	0.85
RCOND75 304SS	3/4"	1	1	113	14"	0.824"	1.050"	0.107"	9' 11 1/4"	1.13
RCOND100 304SS	1"	1	1	168	11 1/2"	1.049"	1.310"	0.126"	9' 11"	1.68
RCOND125 304SS	1 1/4"	1	1	263	11 1/2"	1.380"	1.660"	0.140"	9' 11"	2.72
RCOND150 304SS	1 1/2"	1	1	272	11 1/2"	1.610"	1.900"	0.138"	9' 11"	2.72
RCOND200 304SS	2"	1	1	365	11 1/2"	2.067"	2.370"	0.146"	9' 11"	3.65
RCOND250 304SS	2 1/2"	1	1	5500	8"	2.469"	2.870"	0.193"	9' 10 1/2"	*
RCOND300 304SS	3"	1	1	7200	8"	3.068"	3.500"	0.205"	9' 10 1/2"	*
RCOND400 304SS	4"	1	1	10000	8"	4.026"	4.500"	0.225"	9' 10 1/4"	*
RCOND50 316SS	1/2"	1	1	85	14"	0.622"	0.840"	0.104"	9' 11 1/4"	0.85
RCOND75 316SS	3/4"	1	1	113	14"	0.824"	1.050"	0.107"	9' 11 1/4"	1.13
RCOND100 316SS	1"	1	1	168	11 1/2"	1.049"	1.310"	0.126"	9' 11"	1.68
RCOND125 316SS	1 1/4"	1	1	263	11 1/2"	1.380"	1.660"	0.140"	9' 11"	2.72
RCOND150 316SS	1 1/2"	1	1	272	11 1/2"	1.610"	1.900"	0.138"	9' 11"	2.72
RCOND200 316SS	2"	1	1	365	11 1/2"	2.067"	2.370"	0.146"	9' 11"	3.65
RCOND250 316SS	2 1/2"	1	1	5500	8"	2.469"	2.870"	0.193"	9' 10 1/2"	*
RCOND300 316SS	3"	1	1	7200	8"	3.068"	3.500"	0.205"	9' 10 1/2"	*
RCOND400 316SS	4"	1	1	10000	8"	4.026"	4.500"	0.225"	9' 10 1/4"	*

STANDARD RADIUS ELBOWS



RLB5090 304SS



Features:

- Designed for use with stainless threaded rigid conduit
- These stainless steel elbows are polished to a bright finish for increased corrosion resistance and improved appearance

Cat. #	Size	Unit Qty.	Std. Pkg.	Wt. Lbs. Per 100	Radius C	Offset A	Straight End B
RLB5090 304SS	1/2"	1	1	76	4.00"	6.50"	2.12"
RLB7590 304SS	3/4"	1	1	109	4.50"	7.25"	2.75"
RLB10090 304SS	1"	1	1	188	5.75"	8.63"	2.88"
RLB12590 304SS	1 1/4"	1	1	310	7.50"	10.75"	3.25"
RLB15090 304SS	1 1/2"	1	1	422	8.25"	11.63"	3.38"
RLB20090 304SS	2"	1	1	611	9.50"	13.31"	3.81"
RLB25090 304SS	2 1/2"	1	1	611	10.50"	16.50"	5.75"
RLB30090 304SS	3"	1	1	611	13.00"	18.75"	5.79"
RLB40090 304SS	4"	1	1	611	16.00"	23.18"	7.96"
RLB5090 316SS	1/2"	1	1	76	4.00"	6.50"	2.12"
RLB7590 316SS	3/4"	1	1	109	4.50"	7.25"	2.75"
RLB10090 316SS	1"	1	1	188	5.75"	8.63"	2.88"
RLB12590 316SS	1 1/4"	1	1	310	7.50"	10.75"	3.25"
RLB15090 316SS	1 1/2"	1	1	422	8.25"	11.63"	3.38"
RLB20090 316SS	2"	1	1	611	9.50"	13.31"	3.81"
RLB25090 316SS	2 1/2"	1	1	611	10.50"	16.50"	5.75"
RLB30090 316SS	3"	1	1	611	13.00"	18.75"	5.79"
RLB40090 316SS	4"	1	1	611	16.00"	23.18"	7.96"

Stainless Steel

Stainless Steel Fittings

Nipples

CONDUIT NIPPLES

UL File No. E-324286



NPL50200 304SS



Cat. #	Size	Unit Qty.	Std. Pkg.	Wt. Lbs. Per 100
NPL50CL 304SS	1/2" x CLOSE	1	1	5
NPL50200 304SS	1/2" x 2"	1	1	12
NPL50250 304SS	1/2" x 2 1/2" L	1	1	14
NPL50300 304SS	1/2" x 3" L	1	1	18
NPL50350 304SS	1/2" x 3 1/2" L	1	1	21
NPL50400 304SS	1/2" x 4" L	1	1	24
NPL50500 304SS	1/2" x 5" L	1	1	31
NPL50600 304SS	1/2" x 6" L	1	1	38
NPL50800 304SS	1/2" x 8" L	1	1	51
NPL501000 304SS	1/2" x 10" L	1	1	66
NPL501200 304SS	1/2" x 12" L	1	1	79
NPL50CL 316SS	1/2" x CLOSE	1	1	5
NPL50200 316SS	1/2" x 2"	1	1	12
NPL50250 316SS	1/2" x 2 1/2" L	1	1	14
NPL50300 316SS	1/2" x 3" L	1	1	18
NPL50350 316SS	1/2" x 3 1/2" L	1	1	21
NPL50400 316SS	1/2" x 4" L	1	1	24
NPL50500 316SS	1/2" x 5" L	1	1	31
NPL50600 316SS	1/2" x 6" L	1	1	38
NPL50800 316SS	1/2" x 8" L	1	1	51
NPL501000 316SS	1/2" x 10" L	1	1	66
NPL501200 316SS	1/2" x 12" L	1	1	79
NPL75CL 304SS	3/4" x CLOSE	1	1	8
NPL75200 304SS	3/4" x 2"	1	1	14
NPL75250 304SS	3/4" x 2 1/2" L	1	1	19
NPL75300 304SS	3/4" x 3" L	1	1	23
NPL75350 304SS	3/4" x 3 1/2" L	1	1	27
NPL75400 304SS	3/4" x 4" L	1	1	30
NPL75500 304SS	3/4" x 5" L	1	1	41
NPL75600 304SS	3/4" x 6" L	1	1	50
NPL75800 304SS	3/4" x 8" L	1	1	68
NPL751000 304SS	3/4" x 10" L	1	1	83
NPL751200 304SS	3/4" x 12" L	1	1	103
NPL75CL 316SS	3/4" x CLOSE	1	1	8
NPL75200 316SS	3/4" x 2"	1	1	14
NPL75250 316SS	3/4" x 2 1/2" L	1	1	19
NPL75300 316SS	3/4" x 3" L	1	1	23
NPL75350 316SS	3/4" x 3 1/2" L	1	1	27
NPL75400 316SS	3/4" x 4" L	1	1	30
NPL75500 316SS	3/4" x 5" L	1	1	41
NPL75600 316SS	3/4" x 6" L	1	1	50
NPL75800 316SS	3/4" x 8" L	1	1	68
NPL751000 316SS	3/4" x 10" L	1	1	83
NPL751200 316SS	3/4" x 12" L	1	1	103
NPL100CL 304SS	1" x CLOSE	1	1	13
NPL100200 304SS	1" x 2"	1	1	23
NPL100250 304SS	1" x 2 1/2" L	1	1	26
NPL100300 304SS	1" x 3" L	1	1	31
NPL100350 304SS	1" x 3 1/2" L	1	1	41
NPL100400 304SS	1" x 4" L	1	1	51
NPL100500 304SS	1" x 5" L	1	1	62
NPL100600 304SS	1" x 6" L	1	1	72
NPL100800 304SS	1" x 8" L	1	1	97
NPL1001000 304SS	1" x 10" L	1	1	135
NPL1001200 304SS	1" x 12" L	1	1	152
NPL100CL 316SS	1" x CLOSE	1	1	13
NPL100200 316SS	1" x 2"	1	1	23
NPL100250 316SS	1" x 2 1/2" L	1	1	26
NPL100300 316SS	1" x 3" L	1	1	31
NPL100350 316SS	1" x 3 1/2" L	1	1	41
NPL100400 316SS	1" x 4" L	1	1	51
NPL100500 316SS	1" x 5" L	1	1	62
NPL100600 316SS	1" x 6" L	1	1	72

Features:

- Designed for use with stainless threaded rigid conduit
- These nipples are polished to a bright finish for increased corrosion resistance and improved appearance

Cat. #	Size	Unit Qty.	Std. Pkg.	Wt. Lbs. Per 100
NPL100800 316SS	1" x 8" L	1	1	97
NPL1001000 316SS	1" x 10" L	1	1	135
NPL1001200 316SS	1" x 12" L	1	1	152
NPL125CL 304SS	1 1/4" x CLOSE	1	1	20
NPL125200 304SS	1 1/4" x 2"	1	1	25
NPL125250 304SS	1 1/4" x 2 1/2" L	1	1	34
NPL125300 304SS	1 1/4" x 3" L	1	1	43
NPL125350 304SS	1 1/4" x 3 1/2" L	1	1	51
NPL125400 304SS	1 1/4" x 4" L	1	1	61
NPL125500 304SS	1 1/4" x 5" L	1	1	81
NPL125600 304SS	1 1/4" x 6" L	1	1	96
NPL125800 304SS	1 1/4" x 8" L	1	1	132
NPL1251000 304SS	1 1/4" x 10" L	1	1	200
NPL1251200 304SS	1 1/4" x 12" L	1	1	201
NPL125CL 316SS	1 1/4" x CLOSE	1	1	20
NPL125200 316SS	1 1/4" x 2"	1	1	25
NPL125250 316SS	1 1/4" x 2 1/2" L	1	1	34
NPL125300 316SS	1 1/4" x 3" L	1	1	43
NPL125350 316SS	1 1/4" x 3 1/2" L	1	1	51
NPL125400 316SS	1 1/4" x 4" L	1	1	61
NPL125500 316SS	1 1/4" x 5" L	1	1	81
NPL125600 316SS	1 1/4" x 6" L	1	1	96
NPL125800 316SS	1 1/4" x 8" L	1	1	132
NPL1251000 316SS	1 1/4" x 10" L	1	1	200
NPL1251200 316SS	1 1/4" x 12" L	1	1	201
NPL150200 304SS	1 1/2" x 2"	1	1	25
NPL150250 304SS	1 1/2" x 2 1/2" L	1	1	47
NPL150300 304SS	1 1/2" x 3" L	1	1	53
NPL150350 304SS	1 1/2" x 3 1/2" L	1	1	64
NPL150400 304SS	1 1/2" x 4" L	1	1	75
NPL150500 304SS	1 1/2" x 5" L	1	1	88
NPL150600 304SS	1 1/2" x 6" L	1	1	114
NPL150800 304SS	1 1/2" x 8" L	1	1	151
NPL1501000 304SS	1 1/2" x 10" L	1	1	176
NPL1501200 304SS	1 1/2" x 12" L	1	1	243
NPL150200 316SS	1 1/2" x 2"	1	1	25
NPL150250 316SS	1 1/2" x 2 1/2" L	1	1	47
NPL150300 316SS	1 1/2" x 3" L	1	1	53
NPL150350 316SS	1 1/2" x 3 1/2" L	1	1	64
NPL150400 316SS	1 1/2" x 4" L	1	1	75
NPL150500 316SS	1 1/2" x 5" L	1	1	88
NPL150600 316SS	1 1/2" x 6" L	1	1	114
NPL150800 316SS	1 1/2" x 8" L	1	1	151
NPL1501000 316SS	1 1/2" x 10" L	1	1	176
NPL1501200 316SS	1 1/2" x 12" L	1	1	243
NPL200200 304SS	2" x 2"	1	1	33
NPL200250 304SS	2" x 2 1/2" L	1	1	47
NPL200300 304SS	2" x 3" L	1	1	60
NPL200350 304SS	2" x 3 1/2" L	1	1	80
NPL200400 304SS	2" x 4" L	1	1	100
NPL200500 304SS	2" x 5" L	1	1	127
NPL200600 304SS	2" x 6" L	1	1	152
NPL200800 304SS	2" x 8" L	1	1	204
NPL2001000 304SS	2" x 10" L	1	1	254
NPL2001200 304SS	2" x 12" L	1	1	305
NPL200200 316SS	2" x 2"	1	1	33
NPL200250 316SS	2" x 2 1/2" L	1	1	47
NPL200300 316SS	2" x 3" L	1	1	60
NPL200350 316SS	2" x 3 1/2" L	1	1	80
NPL200400 316SS	2" x 4" L	1	1	100
NPL200500 316SS	2" x 5" L	1	1	127
NPL200600 316SS	2" x 6" L	1	1	152
NPL200800 316SS	2" x 8" L	1	1	204
NPL2001000 316SS	2" x 10" L	1	1	254
NPL2001200 316SS	2" x 12" L	1	1	305

Stainless Steel Fittings

Couplings

COUPLINGS

UL File No. E-324286



RC50 304SS



Features:

- Designed for use with stainless threaded rigid conduit
- These stainless steel couplings are polished to a bright finish for increased corrosion resistance and improved appearance

Cat. #	Size	Unit Qty.	Std. Pkg.	Wt. Lbs. Per 100	Length	Outside Dia.
RC50 304SS	1/2"	1	1	18	1.625"	1.01"
RC75 304SS	3/4"	1	1	26	1.650"	1.25"
RC100 304SS	1"	1	1	28	2.000"	1.53"
RC125 304SS	1 1/4"	1	1	41	2.040"	1.95"
RC150 304SS	1 1/2"	1	1	51	2.063"	2.16"
RC200 304SS	2"	1	1	69	2.125"	2.65"
RC250 304SS	2 1/2"	1	1	178	3.188"	3.25"
RC300 304SS	3"	1	1	229	3.313"	3.87"
RC400 304SS	4"	1	1	313	3.516"	4.88"
RC50 316SS	1/2"	1	1	18	1.625"	1.01"
RC75 316SS	3/4"	1	1	26	1.650"	1.25"
RC100 316SS	1"	1	1	28	2.000"	1.53"
RC125 316SS	1 1/4"	1	1	41	2.040"	1.95"
RC150 316SS	1 1/2"	1	1	51	2.063"	2.16"
RC200 316SS	2"	1	1	69	2.125"	2.65"
RC250 316SS	2 1/2"	1	1	178	3.188"	3.25"
RC300 316SS	3"	1	1	229	3.313"	3.87"
RC400 316SS	4"	1	1	313	3.516"	4.88"

Stainless Steel

THREE-PIECE COUPLINGS



191SS

Features:

- Designed to join and connect threaded ends of rigid conduit where neither length of conduit can be turned
- These stainless steel three-piece couplings are polished to a bright finish for increased corrosion resistance and improved appearance
- 316 stainless steel

Cat. #	Size	Unit Qty.	Std. Pkg.	Wt. Lbs. Per 100	Overall Length	Major Nut Dia.	Major Body Dia.
191SS	3/4"	50	50	33	1.51"	1.51"	1.31"
192SS	1"	50	50	33	1.51"	1.66"	1.66"

Stainless Steel Fittings

Liquidtight Fittings

Applications:

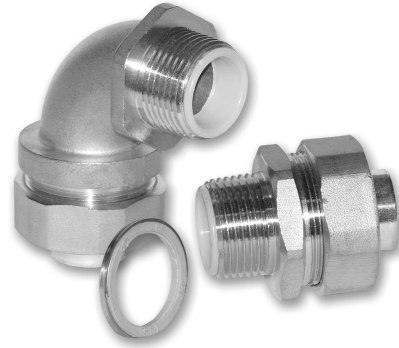
- Used in tough, industrial and standard applications
- Made of strong, corrosion-resistant, 304 stainless steel for long, dependable service where superior corrosion resistance and/or strength is required

Features:

- Liquidtight, raintight, oiltight for protection and long life in wet, dusty and corrosive environments
- Hex shaped gland nut allows for easy wrenching, providing a fast, tight installation
- Suitable for wet locations
- Reusable, long ferrule prevents pull-out and tight bend conduit pop-out
- Furnished with locknut and sealing ring
- Third party certified
- Available in straight and 90 degree configurations
- Available in sizes 1/2" to 2"

Certifications and Compliances:

- UL Listed liquidtight flexible metal conduit fittings are suitable for use in the following hazardous locations under NEC:
 - Class I, Division 2;
 - Class II, Divisions 1 & 2; and
 - Class III, Divisions 1 & 2;
- Suitable for grounding in sizes 3/8" through 1 1/4" under NEC
- UL Standards 514B, 467
- cUL Standard C22.2 No. 18F
- UL File No. E-19189



Standard Materials:

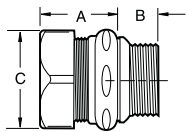
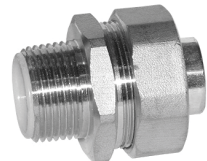
- Body – straight: 304 stainless steel
90°: 304 stainless steel
- Gland nut – 304 stainless steel
- Ferrule – steel
- Gland nut sealing ring – nylon
- Sealing gasket – polypropylene
- Locknut – stainless steel

Standard Finish:

- 304 stainless steel – natural

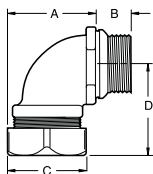
Stainless Steel

Straight Connectors – 304 Stainless Steel



Trade Size	Cat. # Insulated	Unit Qty.	Wt. Lbs. Per 100	A	B	C
1/2"	LTB50SS	25	21	1.250	0.500	1.250
3/4"	LTB75SS	25	28	1.250	0.500	1.563
1"	LTB100SS	5	46	1.438	0.625	1.813
1 1/4"	LTB125SS	5	57	1.500	0.688	2.250
1 1/2"	LTB150SS	2	68	1.625	0.750	2.438
2"	LTB200SS	1	103	1.750	0.750	3.000

90° Angle Connectors – 304 Stainless Steel



Trade Size	Cat. # Insulated	Unit Qty.	Wt. Lbs. Per 100	A	B	C	D
1/2"	LTB5090SS	25	30	1.438	0.500	1.250	1.625
3/4"	LTB7590SS	10	43	1.625	0.500	1.563	1.750
1"	LTB10090SS	10	73	2.313	0.625	1.813	2.125
1 1/4"	LTB12590SS	5	96	2.375	0.688	2.250	2.250
1 1/2"	LTB15090SS	2	104	3.688	0.750	2.438	2.375
2"	LTB20090SS	1	143	3.813	0.750	3.000	2.750

Stainless Steel Fittings

Sealing Gaskets & Locknuts

SEALING GASKETS (ORDER SEPARATELY)

Applications:

- To form a raintight seal between a conduit fitting and the outside of a box

Features:

- Gasket is designed to provide superior sealing for customer applications
- Constructed of stainless steel to provide extreme durability in the most corrosive applications

Certifications and Compliances:

- UL Listed
- cUL Listed

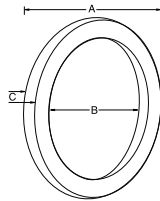


Standard Materials:

- Ring – stainless steel
- Gasket – neoprene rubber

Standard Finishes:

- Stainless steel – natural
- Neoprene rubber – natural



Trade Size	Cat. #	Unit Qty.	Wt. Lbs. Per 100	A	B	C
1/2"	SG1SS	50	50	1.125	0.813	0.188
3/4"	SG2SS	25	25	1.375	1.125	0.188
1"	SG3SS	25	25	1.625	1.313	0.188
1 1/4"	SG4SS	5	5	2.000	1.625	0.188
1 1/2"	SG5SS	5	5	2.250	1.875	0.188
2"	SG6SS	5	5	2.750	2.313	0.188

LOCKNUTS (ORDER SEPARATELY)

Applications:

- 316 stainless steel locknuts can be used with conduit or NPS threaded pipe

Features:

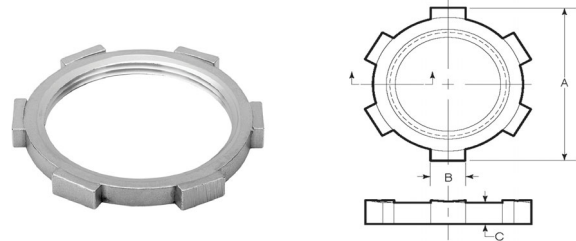
- Precision machined threads allow for easy installation
- Heavy stock thickness and specially designed tabs tighten securely and will not easily loosen even in the most severe applications

Standard Material:

- Locknut – stainless steel

Standard Finish:

- Stainless steel – natural



Trade Size	Cat. #	Unit Qty.	Wt. Lbs. Per 100	A	B	C	Threads/Inch
1/2"	11SS	1000	2	1.313	0.250	0.190	14.000
3/4"	12SS	500	3	1.613	0.312	0.220	14.000
1"	13SS	500	5	1.863	0.380	0.260	11.500
1 1/4"	14SS	100	7	2.250	0.380	0.260	11.500
1 1/2"	15SS	100	10	2.562	0.438	0.270	11.500
2"	16SST	100	21	3.063	0.602	0.280	11.500

Stainless Steel