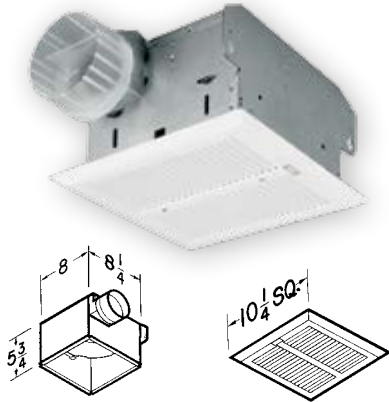


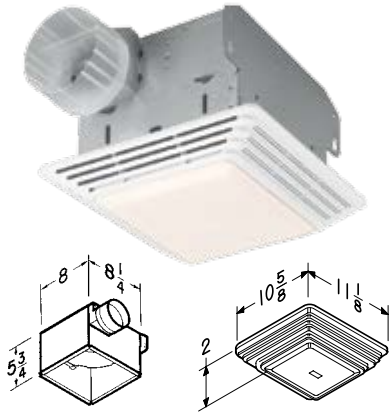
Bath Fans and Fan/Lights

Heavy-duty operation

Model HD50, HD80




Model HD50L, HD80L



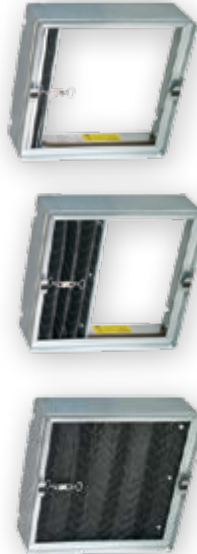
- Enclosed motors with long-life bearings for continuous operation
- Rugged metal fan grille for added durability (HD50 and HD80)
- HD50 and HD80 can be mounted in wall or ceiling
- Grille torsion spring-mounted for easy installation
- Pre-wired outlet for plug-in motor plate
- AMCA licensed for both air and sound (HD50 and HD80)

Model	CFM	Sones	Lighting	Ducting
HD50*	50	1.5	—	4"
HD50L	50	1.5	100W	4"
HD80	80	2.5	—	4"
HD80L	80	2.5	100W	4"

 *ENERGY STAR® qualified.

Radiation/Fire Damper Fan Project Packs

A fire resistant screen automatically closes when excessive heat is detected. The breakaway fusible link triggers the closing of the radiation damper's fire resistant screen to prevent smoke and fire from traveling through the ductwork.




- 165° fusible link
- Galvanized Steel Frame
- Stainless steel negator-type closure spring
- UL Classified (UL Standard 555C) for use in 1-, 2-, 3-hour fire-rated floor-ceiling or roof-ceiling designs
- All models offered as Project Packs
- HD models feature a heavy-duty motor

Project Housing Pack includes:

- Rough-in housing with attached radiation/fire damper
- Adjustable hanger bars that span up to 24"
- 4" metal duct connector with damper

Model	CFM	Sones	Type/Pack	Quantity	Notes
RDH	—	—	Housing/4	—	—
RDJ1	—	—	Housing/1	—	—
80RDF	80	2.5	Finish/4	—	—
110RDF	110	4.0	Finish/4	—	—
HD50RDF*	50	1.5	Finish/4	Heavy-duty Motor	—
HD80RDF	80	2.5	Finish/4	Heavy-duty Motor	—

 *ENERGY STAR® qualified

Model RDH



Project Finish Packs include:

- Assembled motor plate, wheel and plug-in motor
- Rugged metal grille for added durability
- Works with 80RDF, 110RDF, HD50RDF and HD80RDF

Models 80RDF, 110RDF, HD50RDF & HD80RDF



Model RDJ1



Radiation Damper Accessory Kit includes:

- Radiation damper accessory with metal grille, metal duct connector, hanger bars and plaster guard (no housing)
- Works with 770, 784, 676, 684, HD50 and HD80

