

Combination Type Lugs

Type XL & Type XLH

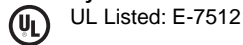
Features:

- Each fitting takes a range of cable sizes.
- Type XL and XLH are identical except that the type XL has a socket set screw, while the type XLH has a hex head screw.
- Both types are equipped with brass screws and brass or bronze pressure plates on XL011 and XLH011 and larger. Wide brass compression set screws, with rounded ends, covering the full width of the conductor cavity are used on the XL041.
- Castings are of high conductivity copper alloy and are so designed, that high clamping pressure can be exerted, and maximum surface contact is provided with the wires throughout the specified range.

Material:

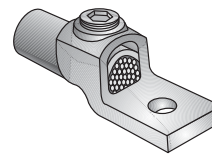
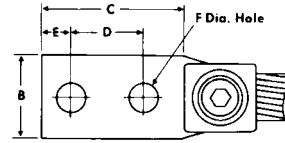
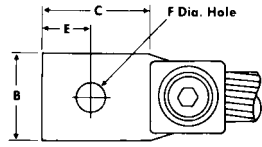
Cast Copper alloy body and Brass screws. Brass or Copper alloy pressure plates.

Third Party Certification:

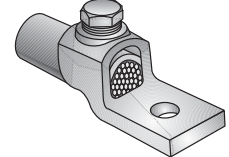


Applicable Third Party Standards:

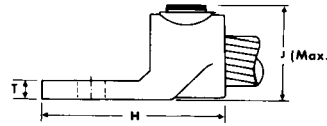
UL Standard: 486A
Fed. Spec: W-S-610



Type XL



Type XLH



Catalog Number	Conductor Range AWG/kcmil		No. of Holes	Dimensions in Inches								
	Min.	Max.		B	C	D	E	F	H	J	T	
XL041*	8 Sol.	4	1	1/2	5/8		9/32	9/32	1 1/8	1 1/16	5/32	
XL011*	4	1	1	5/8	3/4		3/8	9/32	1 1/16	1 1/16	7/32	
XL012*	4	1	2	5/8	1 1/16	3/4	5/16	9/32	2 1/4	1 1/16	7/32	
XL221	1	2/0	1	1 3/16	1 5/16		7/16	1 3/32	1 7/8	1 3/16	1/4	
XL222	1	2/0	2	1 3/16	1 15/16	1	7/16	1 3/32	2 7/8	1 3/16	1/4	
XL241	2/0	4/0	1	1	1 3/16		9/16	1 3/32	2 1/4	1 3/8	9/32	
XL242	2/0	4/0	2	1	1 15/16	1	7/16	1 3/32	3	1 3/8	9/32	
XL301	4/0	300	1	1 1/4	1 1/16		1 1/16	1 7/32	2 5/8	1 1/16	9/32	
XL302	4/0	300	2	1 1/4	2	1	7/16	1 3/32	3 3/16	1 1/16	9/32	
XL501	300	500	1	1 3/8	1 3/8		1 3/16	1 7/32	3	1 1 3/16	3/8	
XL502	300	500	2	1 3/8	1 15/16	1	7/16	1 3/32	3 5/16	1 1 3/16	3/8	
XL751	500	750	1	1 3/4	2		1	1 7/32	3 1 1/16	2 1/16	1 3/32	3/8
XL752	500	750	2	1 3/4	2 13/16	1 1/2	5/8	1 7/32	4 1/2	2 1/16	1 3/32	3/8
XL921	750	1000	1	2	2 1/4		1 1/8	2 1/32	4 3/4	2 1/16	7/16	3/8
XL922	750	1000	2	2	2 3/4	1 1/2	5/8	1 7/32	4 3/4	2 1 1/16	7/16	3/8

*Slotted Set Screw furnished for this size.

Catalog Number	Conductor Range AWG/kcmil		No. of Holes	Dimensions in Inches								Hex Wrench Size
	Min.	Max.		B	C	D	E	F	H	J	T	
XLH011	4	1	1	5/8	3/4		3/8	9/32	1 1/16	1 1/4	7/32	*
XLH012	4	1	2	5/8	1 1/16	3/4	5/16	9/32	2 1/4	1 1/4	7/32	*
XLH221	1	2/0	1	1 3/16	1 5/16		7/16	1 3/32	1 7/8	1 3/8	1/4	1/4
XLH222	1	2/0	2	1 3/16	1 15/16	1	7/16	1 3/32	2 7/8	1 3/8	1/4	1/4
XLH241	2/0	4/0	1	1	1 3/16		9/16	1 3/32	2 1/4	1 5/8	9/32	5/16
XLH242	2/0	4/0	2	1	1 15/16	1	7/16	1 3/32	3	1 5/8	9/32	5/16
XLH301	4/0	300	1	1 1/4	1 1/16		1 1/16	1 7/32	2 5/8	1 3/4	9/32	5/16
XLH302	4/0	300	2	1 1/4	2	1	7/16	1 3/32	3 3/16	1 3/4	9/32	5/16
XLH501	300	500	1	1 3/8	1 3/8		1 3/16	1 7/32	3	2 1/16	3/8	3/8
XLH502	300	500	2	1 3/8	1 15/16	1	7/16	1 3/32	3 5/16	2 1/16	3/8	3/8
XLH751	500	750	1	1 3/4	2		1	1 7/32	3 1 1/16	2 1/2	1 3/32	3/8
XLH752	500	750	2	1 3/4	2 13/16	1 1/2	5/8	1 7/32	4 1/2	2 1/2	1 3/32	3/8
XLH921	750	1000	1	2	2 1/4		1 1/8	2 1/32	4 3/4	2 1 1/16	7/16	3/8
XLH922	750	1000	2	2	2 3/4	1 1/2	5/8	1 7/32	4 3/4	2 1 1/16	7/16	3/8