

# Cast Device Boxes

For Rigid Conduit & IMC

**Types**

**FS - Shallow**

**FD - Deep**

**Use:**

Accommodates wiring devices and provides opening to splice, tap or pull conductors.

**Features:**

- Tapered threaded hubs (NPT) with integral bushings.
- Both FS and FD styles are deeper than similar boxes, providing greater internal volume.
- Internal grounding screw standard on all boxes.
- Mounting feet standard on FS, FD, FSC, FDC, FSA and FDA styles. FS/FD boxes without mounting lugs may be supported by the attached conduits per NEC Section 314-23(E).
- Available single gang, two gang and tandem styles.
- Suitable for use in wet locations when used with gasketed covers.
- Gray Iron is suitable for concrete use.
- For use with FS style covers on Pages AE3 and AE4 as well as standard device plates made of steel, brass, bakelite, etc.


**Material/Finish:**


Gray Iron/Zinc Electroplated/Aluminum Enamel.  
Copper-free Aluminum/Aluminum Enamel.

**Optional Finish:**

For additional corrosion protection, specify Hot Dip Galvanized. Add suffix "G" to Gray Iron catalog number. Contact your local representative for pricing and availability.

**Third Party Certification:**

 UL Listed: E-18095  
Raintight-Suitable for wet locations when used with gasketed covers. See pages AE3 and AE4.

 CSA Certified: 009795  
Raintight-Suitable for wet locations when used with gasketed covers. See pages AE3 and AE4.

**Dimensional Data:**

See page AE6.

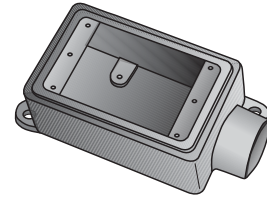
**Applicable Third Party Standards:**

Trade Size (inches)	Catalog Number Gray Iron	Catalog Number Aluminum
1/2	FS-1-50	FS-1-50A
3/4	FS-1-75	FS-1-75A
1	FS-1-100	
1/2	FD-1-50	FD-1-50A
3/4	FD-1-75	FD-1-75A
1	FD-1-100	
1/2	FSC-1-50	FSC-1-50A
3/4	FSC-1-75	FSC-1-75A
1	FSC-1-100	
1/2	FDC-1-50	FDC-1-50A
3/4	FDC-1-75	FDC-1-75A
1	FDC-1-100	
1/2	FSL-1-50	
3/4	FSL-1-75	
1/2	FDL-1-50	
3/4	FDL-1-75	
1/2	FSR-1-50	
3/4	FSR-1-75	
1/2	FDR-1-50	
3/4	FDR-1-75	
1/2	FSS-1-50	FSS-1-50A
3/4	FSS-1-75	FSS-1-75A
1/2	FSA-1-50	
3/4	FSA-1-75	
1/2	FDA-1-50	
3/4	FDA-1-75	

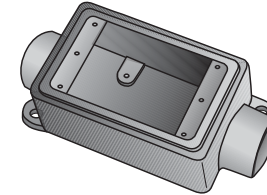
UL Standard: 514A  
CSA Standard: C22.2 No. 18  
Fed Spec: A-A-50563  
NEMA: FB-1

**Suggested Specifications:**

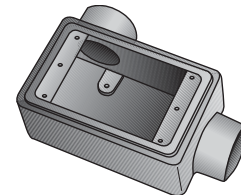
Where cast device boxes are required for mounting wiring devices or splicing, taps or pulling conductors, they are zinc electroplated gray iron with aluminum enamel or copper-free aluminum. They are UL Listed and CSA Certified for wet locations when used with gasketed covers.



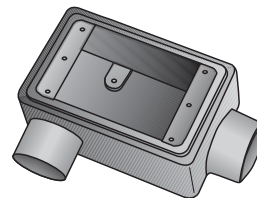
**Type FS & FD**  
Single Gang with mounting feet



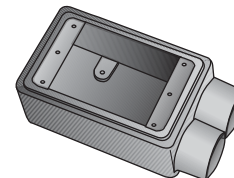
**Type FSC & FDC**  
Single Gang with mounting feet



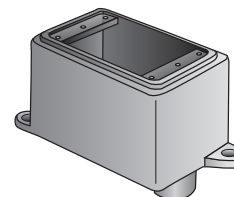
**Type FSL & FDL**  
Single Gang without mounting feet



**Type FSR & FDR**  
Single Gang without mounting feet



**Type FSS**  
Single Gang without mounting feet



**Type FSA & FDA**  
Single Gang with mounting feet

# Cast Device Boxes

For Rigid Conduit & IMC

**Types**

**FS - Shallow**

**FD - Deep**

**Use:**

Accommodates wiring devices and provides opening to splice, tap or pull conductors.

**Features:**

- Tapered threaded hubs (NPT) with integral bushings.
- Both FS and FD styles are deeper than similar boxes, providing greater internal volume.
- Internal grounding screw standard on all boxes.
- Mounting feet standard on FS, FD, FSC, FDC, FSA and FDA styles. FS/ FD boxes without mounting lugs may be supported by the attached conduits per NEC Section 314-23(E).
- Available single gang, two gang and tandem styles.
- Suitable for use in wet locations when used with gasketed covers.
- Gray Iron is suitable for concrete use.
- For use with FS style covers on Pages AE3 and AE4 as well as standard device plates made of steel, brass, bakelite, etc.

**Material/Finish:**

Gray Iron/Zinc Electroplated/Aluminum Enamel.  
Copper-free Aluminum/Aluminum Enamel.

**Optional Finish:**

For additional corrosion protection, specify Hot Dip Galvanized. Add suffix "G" to Gray Iron catalog number. Contact your local representative for pricing and availability.

**Third Party Certification:**



UL Listed:  
E-18095  
Raintight-Suitable for wet locations when used with gasketed covers. See pages AE3 and AE4.



CSA Certified:  
009795  
Raintight-Suitable for wet locations when used with gasketed covers. See pages AE3 and AE4.

**Dimensional Data:**

See page AE6.

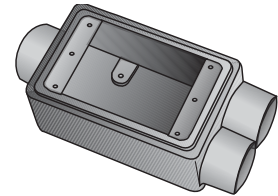
Trade Size (inches)	Catalog Number Gray Iron	Catalog Number Aluminum
1/2	FSCC-1-50	
3/4	FSCC-1-75	FSCC-1-75A
1/2	FDCC-1-50	
3/4	FDCC-1-75	
1/2	FSCT-1-50	
3/4	FSCT-1-75	
1	FSCT-1-100	
1/2	FDCT-1-50	
3/4	FDCT-1-75	
1	FDCT-1-100	
1/2	FSX-1-50	
3/4	FSX-1-75	
1/2	FDX-1-50	
3/4	FDX-1-75	
1/2	FS-2-50	
3/4	FS-2-75	FS-2-75A
1	FS-2-100	
1/2	FD-2-50	
3/4	FD-2-75	
1	FD-2-100	
1/2	FSC-2-50	
3/4	FSC-2-75	FSC-2-75A
1	FSC-2-100	
1/2	FDC-2-50	
3/4	FDC-2-75	
1	FDC-2-100	
3/4	FS-2T-75	

**Applicable Third Party Standards:**

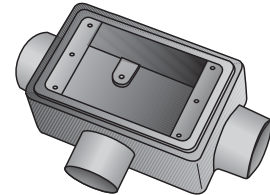
UL Standard: 514A  
CSA Standard: C22.2 No. 18  
Fed Spec: A-A-50563  
NEMA: FB-1

**Suggested Specifications:**

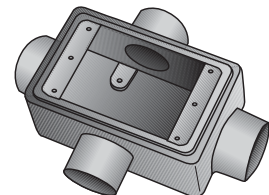
Where cast device boxes are required for mounting wiring devices or splicing, taps or pulling conductors, they are zinc electroplated gray iron with aluminum enamel or copper-free aluminum. They are UL Listed and CSA Certified for wet locations when used with gasketed covers.



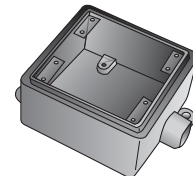
**Type FSCC & FDCC**  
Single Gang without mounting feet



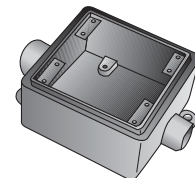
**Type FSCT & FDCT**  
Single Gang without mounting feet



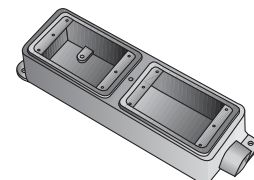
**Type FSX & FDX**  
Single Gang without mounting feet



**Type FS-2 & FD-2**  
Two Gang with mounting feet



**Type FSC-2 & FDC-2**  
Two Gang with mounting feet



**Type FS-2T**  
Tandem with mounting feet

# Cast Device Box Covers

## For FS & FD Boxes

### Types FS-1, FS-2

**Use:**

To cover and seal FS and FD style boxes and to mount wiring devices.

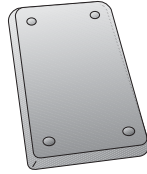
**Features:**

- Various styles and sizes to meet most applications.
- Stainless Steel screws to prevent corrosion (on blank gray iron covers only).
- Blank covers are weatherproof when used with sealing gaskets (ordered separately). See page AE4.
- Covers also mount on ordinary boxes with standard device box openings.

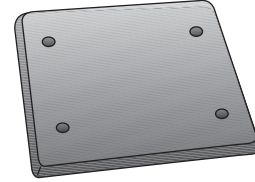
**Material/Finish:**

Gray Iron/Zinc-Electroplated  
Steel/Zinc-Electroplated  
Aluminum/Aluminum Enamel

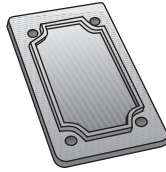
**Suitable for Wet Locations When Installed With Sealing Gaskets.**



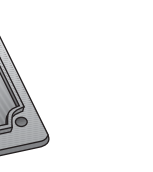
Blank Steel  
FS-1-BCS



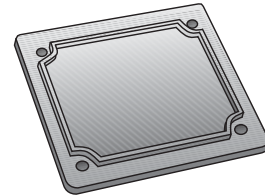
Blank Steel  
FS-2-BCS



Blank  
Gray Iron  
FS-1-BC



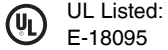
Blank  
Cast Aluminum  
FS-1-BCA



Blank  
Gray Iron  
FS-2-BC

Blank  
Cast Aluminum  
FS-2-BCA

**Third Party Certification:**



UL Listed:  
E-18095

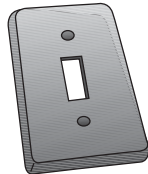


CSA Certified:  
009795

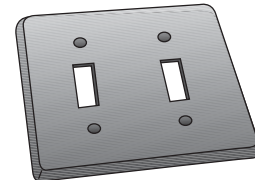
**Applicable Third Party Standards:**

UL Standard: 514A  
CSA Standard: C22.2 No. 18  
Fed Spec: A-A-50563  
NEMA: FB-1, OS-1

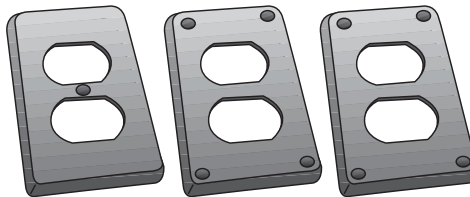
**Suitable for Dry Locations Only.**



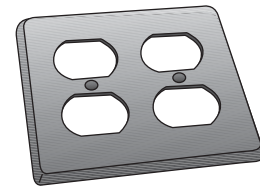
Toggle Switch  
Steel  
FS-1-SCS



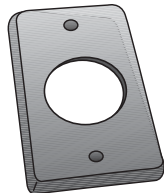
Toggle Switch  
Steel  
FS-2-SCS



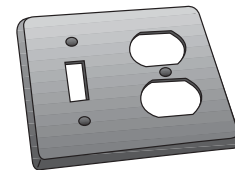
Duplex Receptacle  
Cast Iron or  
Steel  
FS-1-DCS    FS-1-DC    FS-1-DCA



Duplex Receptacle  
Steel  
FS-2-DCS



Round Receptacle  
1 1/8 dia.. Steel    1 1/32 dia.. Steel  
FS-1-LRCS    FS-1-SRCS



Toggle Switch &  
Duplex Receptacle  
Steel  
FS-2-SDCS

Catalog Number	
<b>Single Gang</b>	<b>Two Gang</b>
FS-1-BCS	FS-2-BCS
FS-1-BC	FS-2-BC
FS-1-BCA	FS-2-BCA
FS-1-SCS	FS-2-SCS
FS-1-DCS	FS-2-DCS
FS-1-DC	FS-2-SDCS
FS-1-DCA	
FS-1-LRCS	
FS-1-SRCS	

# Cast Device Box Covers & Gaskets

Suitable for Wet Locations

Types **FS-1, FS-2**

**Use:**

To cover and seal FS and FD style boxes and to mount wiring devices.


**Features:**


- Various styles and sizes to meet most applications.
- Stainless steel screws to prevent corrosion.
- All wet location covers supplied with sealing gaskets.
- Covers also mount on ordinary boxes with standard device box openings.

**Material/Finish:**

Aluminum/Aluminum Enamel  
Neoprene Gaskets

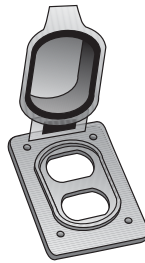
**Third Party Certification:**

 UL Listed:  
E-18095

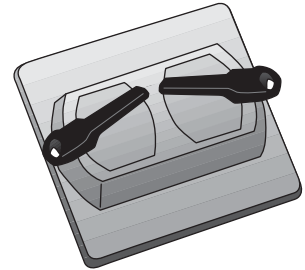
 CSA Certified:  
009795

**Applicable Third Party Standards:**

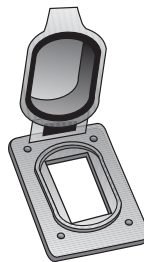
UL Standard: 514A  
CSA Standard: C22.2 No. 18  
Fed Spec: A-A-50563  
NEMA: FB-1



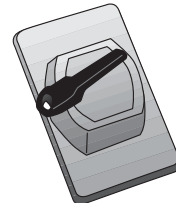
Duplex Receptacle  
Die-Cast Aluminum  
**FS-1-WDCA**



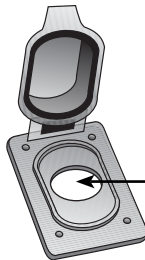
Locking Toggle Switch  
Sand-cast Aluminum  
**FS-2-WSCA**



Ground Fault Receptacle  
Aluminum  
**FS-1-GFCA**



Locking Toggle Switch  
Sand-cast Aluminum  
**FS-1-WSCA**



Electrical Rating  
15 Amp - 125 Volts  
15 Amp - 250 Volts  
20 Amp - 125 Volts

1 13/32" Diameter

Round Receptacle  
Die-cast Aluminum  
**FS-1-WRCA**



Pull Switch  
Sand-cast Aluminum  
**FS-1-WPCA**

**Catalog Number**

<u>Single Gang</u>	<u>Two Gang</u>
FS-1-WDCA	FS-2-WSCA
FS-1-WRCA	FS-2-SG
FS-1-GFCA	
FS-1-SG	
FS-2-WSCA	
FS-1-WPCA	



Sealing Gasket  
Neoprene  
**FS-1-SG**



Sealing Gasket  
Neoprene  
**FS-2-SG**